

SS0610 PRODUCT SPECIFICATION

GENERAL DESCRIPTION :

SS0610 IC IS A KIND OF CMOS TECHNOLOGY PERMITTED TO DESIGN 3 STEPS TOUCH-DIMMER. THE DETAILED FUNCTIONS ARE AS FOLLOW :

STEPS	BRIGHTNESS DELAY (60HZ)	BRIGHTNESS DELAY (50HZ)
OFF ↓ NIGHT LIGHT ↓ MEDIUM LIGHT ↓ HIGH LIGHT ↓ OFF	5.9±0.4mS	7.0±0.4mS
	4.0±0.3mS	4.7±0.3mS
	1.0±0.2mS	1.0±0.2mS

PIN ASSIGNMENT

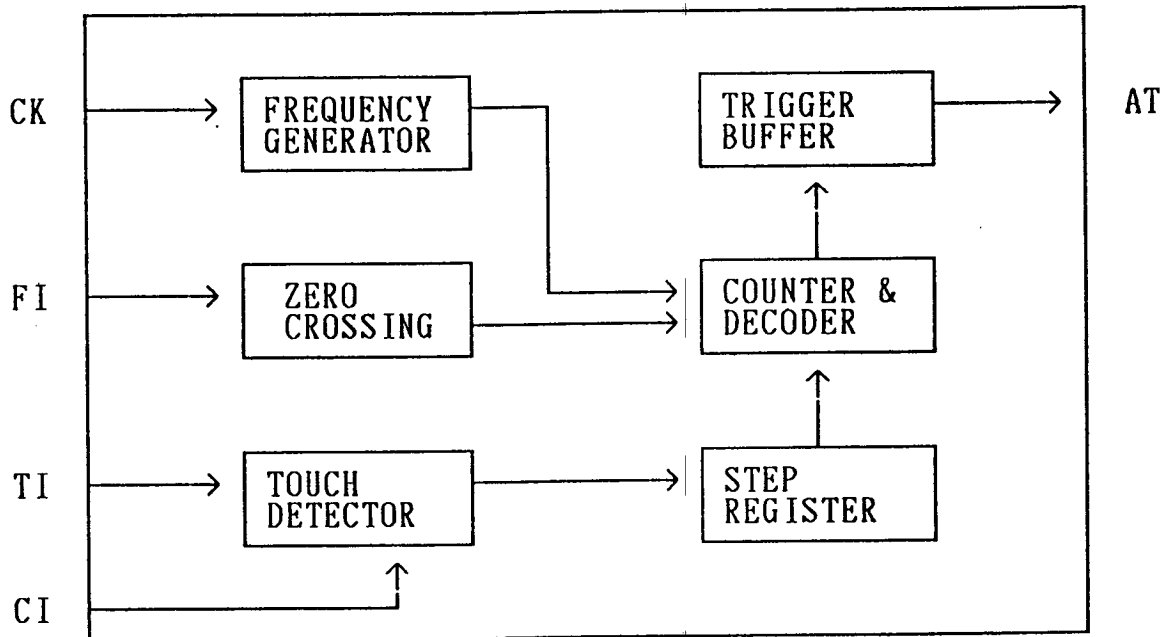
PIN NO	PIN NAME	DESCRIPTION	I/O
1	CK	CLOCK INPUT	I
2	FI	60 OR 50 HZ LINE FREQUENCY	I
3	VDD	POWER SUPPLY PIN	P
4	TI	TOUCH INPUT	B
5	CI	SENSE CONTROL INPUT	B
6	NC		
7	VSS	POWER SUPPLY PIN	P
8	AT	ANGLE-TRIGGER OUTPUT	O

REFERENCE ONLY
DATE : 3/13/1996
VERSION 1
PAGE 1 OF 3

FEATURES :

1. NO MECHANICALLY SWITCH ELEMENTS.
2. HIGH SENSITIVITY AND STABILITY FOR LONG CONNECTING WIRE AND HEAVY LOADING (400pf) ON SENSE-PLATE FOR HUMAN BODY CAPACITY = 50pf.
3. VERY SMALL NUMBER OF PERIPHERAL COMPONENTS REQUIRED

BLOCK DIAGRAM

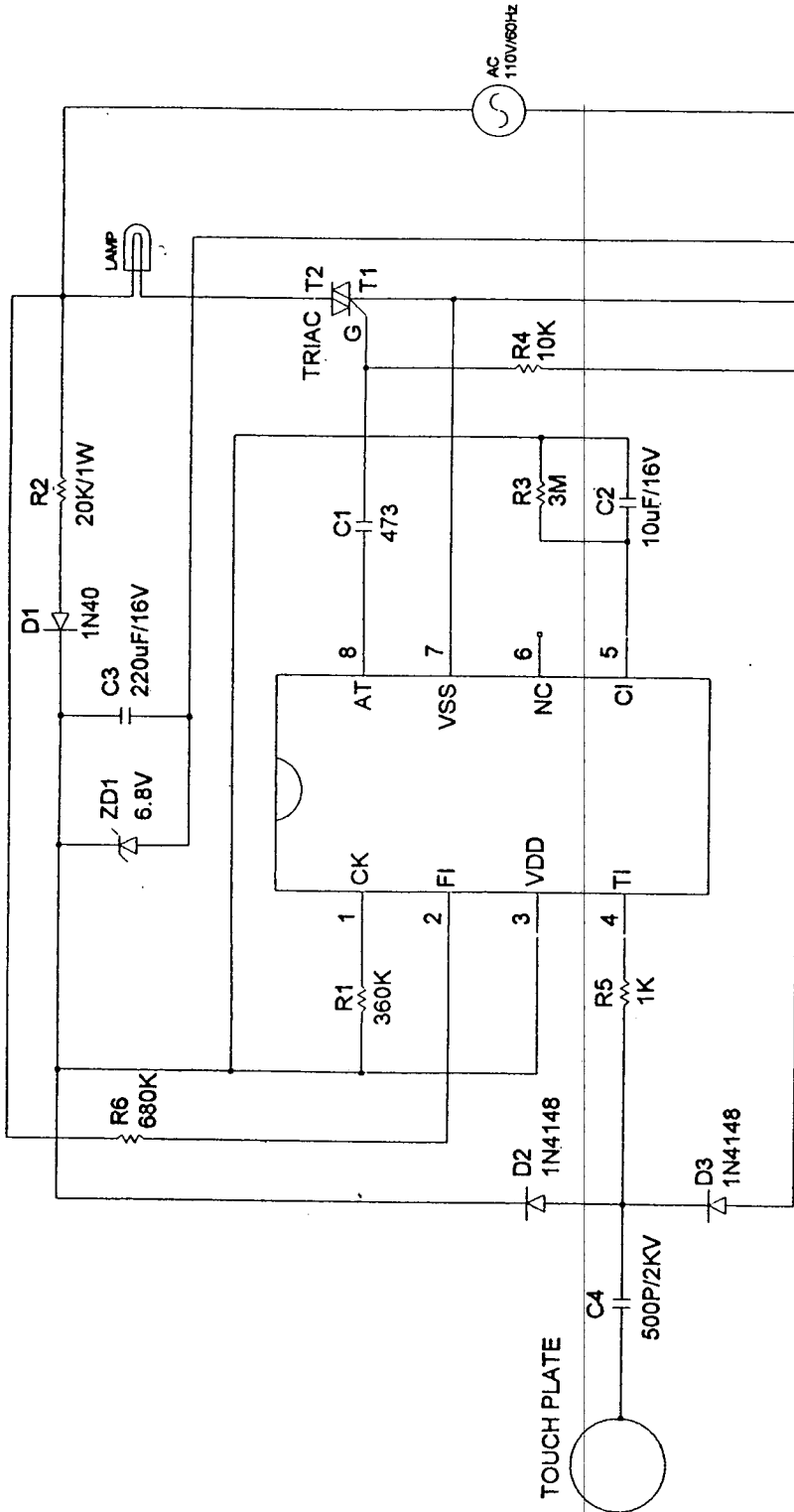


OPERATING PARAMETER :

1. OPERATING VOLTAGE : 5 - 6.8 V
2. OPERATING CURRENT : ≤ 2.0 mA
3. TRIGGER SINKING CURRENT (AT PIN) 10 mA ($V_{out}=3V$)
4. INPUT LEAKAGE : ≤ 0.5 μA
5. INPUT LOW VOLTAGE : $\leq V_{SS} + 0.5V$
6. INPUT HIGH VOLTAGE : $\geq V_{DD} - 0.5V$
7. OPERATING TEMPERATURE : 0°C ~ 80°C
8. STORAGE TEMPERATURE : -20°C ~ 120°C

REFERENCE ONLY
 DATE : 3/13/1996
 VERSION 1
 PAGE 2 OF 3

SS0610 RECOMMEND APPLICATION DIAGRAM

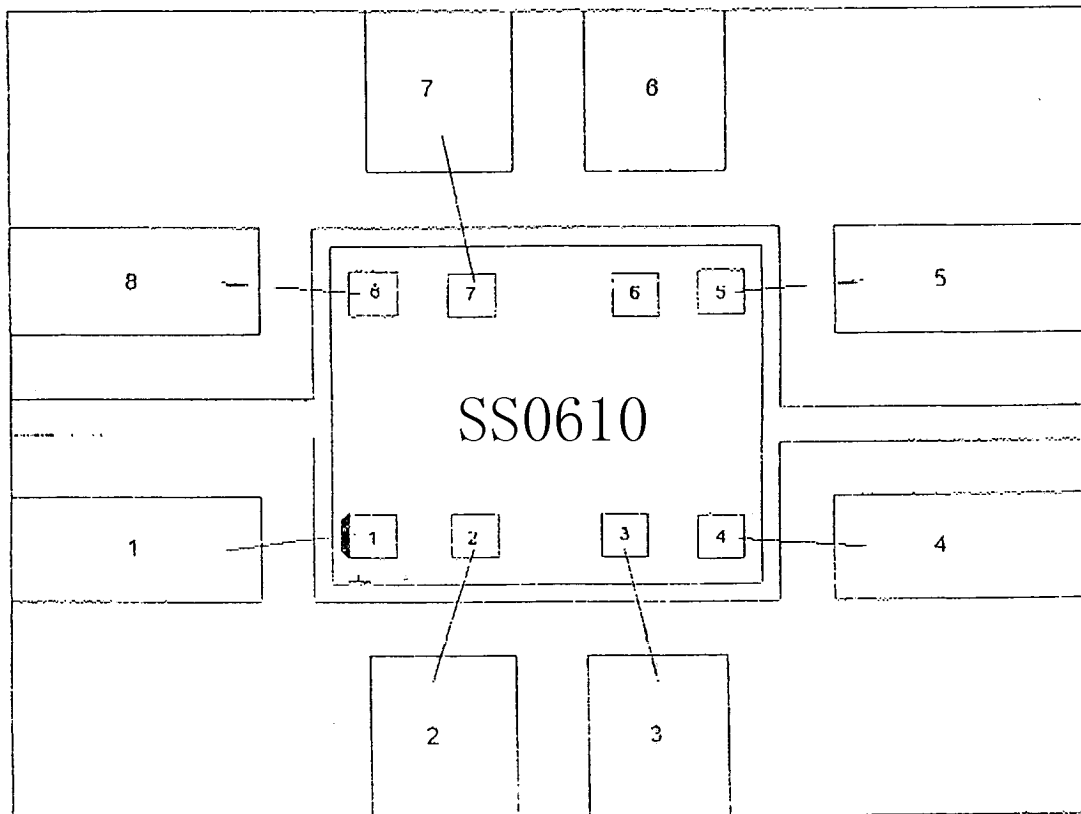


NOTE:
 FOR 220V/50HZ : CHANGE R1 360K TO 430K (FOR 50HZ CHANGE TO 60HZ)
 CHANGE R2 20K/1W TO 40K/2W (FOR 110V CHANGE TO 220V)
 CHANGE R6 680K TO 1M (FOR 110V CHANGE TO 220V)

REFERENCE ONLY
 DATE : 3/13/1996
 VERSION 1
 PAGE 3 OF 3

BONDING DIAGRAM

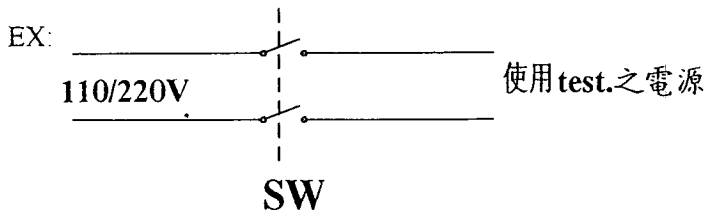
- 1. ITEM : SS0610
- 2. 8 PIN DIP
- 3. CHIP SIZE 910x860 um*um
- 4. WAFER THICKNESS _____ MIL
- 5. BONDING DIAMETER _____ MIL
- 6. LEAD FRAM SIZE _____
- 7. MOLDING COMPOUND _____
- 8. TOP MARK : SS0610
LOT NO
- 9. BOTTOM MARK . SS0610
DATE CODE
- 10. FIRST BONDING PIN : 3



SS0610 Bonding 留意事項

SUNSTAR 单片机专用电路 <http://www.icasic.com/> TEL: 0755-83387030 FAX:0755-83376182 E-MAIL:szss20@163.com

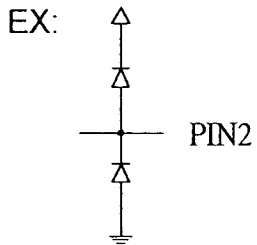
1. Bonding Test 之電源以雙切



2. 測試 3段 or 4段. 以 switch 做觸控 . 以省時間

3. 第一段亮度不够-360K Ω 换成 330K Ω

4. Bonding 測架上電路 PIN 2



5. Plihip. TR. 用 134. 136

規 格

6. 請于子母板上之連接用手工焊接. 以避免高溫(過錫爐). 造成加上之損失.

7. 烙鐵若可以使用消除靜電型, 在後段加上避免靜電. (例車間工人帶防靜電環). 有改善加工之品質. 應該可以提高後段加工之質量.

欢迎索取免费详细资料、设计选型指南和光盘、样品；产品繁多未能尽录，欢迎来电查询。

[中国传感器科技信息网：HTTP://WWW.SENSOR-IC.COM/](http://WWW.SENSOR-IC.COM/)

[工控安防网：HTTP://WWW.PC-PS.NET/](http://WWW.PC-PS.NET/)

[消费电子专用电路网：HTTP://WWW.SUNSTARE.COM/](http://WWW.SUNSTARE.COM/)

E-MAIL：xjr5@163.com szss20@163.com

MSN：suns8888@hotmail.com

QQ: 195847376

地址：深圳市福田区福华路福庆街鸿图大厦 1602 室

电话：0755-83376549 83376489 83387030 83387016

传真：0755-83376182 83338339 邮编：518033 手机：(0)13902971329

深圳展销部：深圳华强北路赛格电子市场 2583 号 TEL/FAX：
0755-83665529 25059422

北京分公司：北京海淀区知春路 132 号中发电子大厦 3097 号

TEL：010-81159046 82615020 13501189838 FAX：010-82613476

上海分公司：上海市北京东路 668 号上海赛格电子市场 2B35 号

TEL：021-28311762 56703037 13701955389 FAX：021-56703037

西安分公司：西安高新开发区 20 所(中国电子科技集团导航技术研究所)
西安劳动南路 88 号电子商城二楼 D23 号

TEL：029-81022619 13072977981 FAX:029-88789382

成都：TEL:(0)13717066236

技术支持：0755-83394033 13501568376