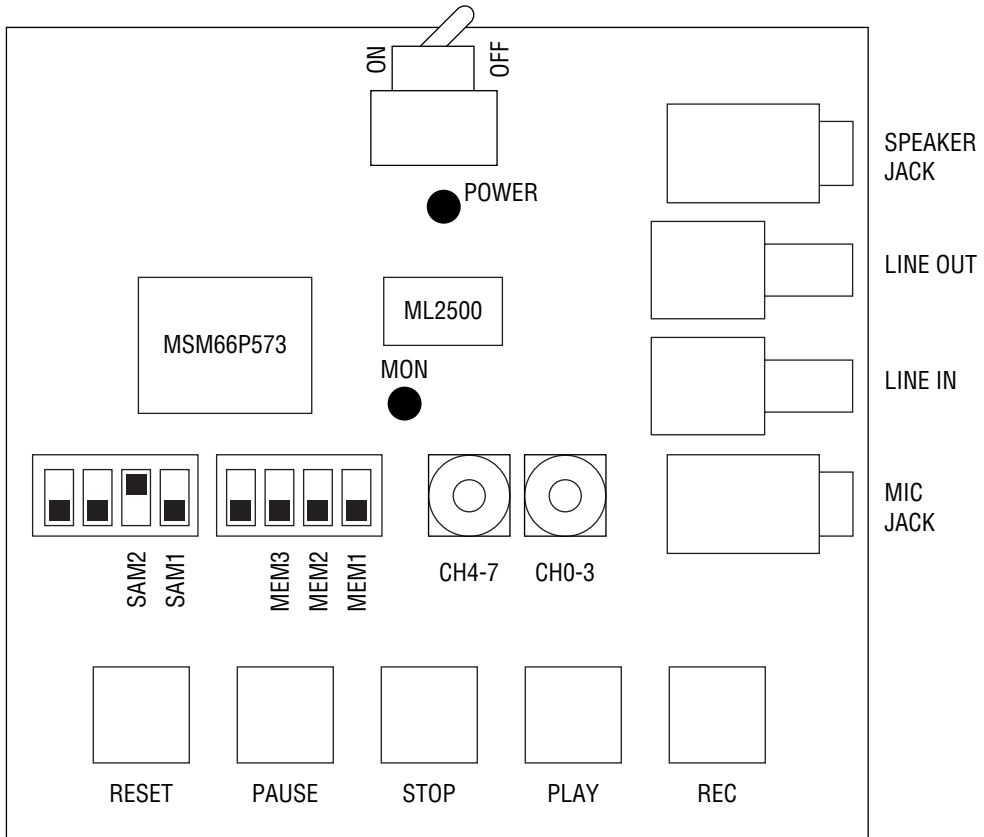


ML2500 DEMO BOARD

ML2500 Demonstration Board

1. BOARD DESIGN



2. SETTING UP RECORDING PARAMETERS

You can setup parameters for recording by using two HEX switches and two DIP switches.

2.1 Select a sampling frequency with SAM2 and SAM1 DIP switches.

SAM2	SAM1	Sampling Frequency
OFF	OFF	4.0 kHz
OFF	ON	5.3 kHz
ON	OFF	6.4 kHz

2.2 Select the number of channels and the maximum memory space to be allocated per channel by using MEM3, MEM2, MEM1 DIP switches.

MEM3	MEM2	MEM1	Number of Channels	Channel *1	Max. Memory Space/Channel *2
OFF	OFF	OFF	1	01h	1M bit [160s]
OFF	OFF	ON	2	01h to 02h	508,800 bits [79.5s]
OFF	ON	OFF	4	01h to 04h	252,800 bits [39.5s]
OFF	ON	ON	8	01h to 08h	124,800 bits [19.5s]
ON	OFF	OFF	16	01h to 10h	60,800 bits [9.5s]
ON	OFF	ON	20	01h to 14h	48,000 bits [7.5s]
ON	ON	OFF	40	01h to 28h	22,400 bits [3.5s]
ON	ON	ON	80	01h to 50h	9,600 bits [1.5s]

*1 Indicates valid HEX value(s) on HEX SW(s) (CH4-7, CH0-3).

*2 [] indicates recording time at 6.4 kHz sampling rate.

2.3 Select a channel to be recorded by setting the corresponding HEX value with HEX switch(es). By doing this you can determine recording phrase. MEM switches setup determines valid channel(s). You cannot record or playback when you select an invalid channel.

3. RECORDING

3.1 Push the Power Switch on to power up the board. On-board. On-board LED (POWER) goes on.

3.2 Reset the board by pushing the RESET button.

3.3 Set up parameters as required according to "2. Setting Up Recording Parameters" earlier in this document.

3.4 Push the REC button and start recording through a microphone. The (MON) LED keeps on while in recording operation.

3.5 Recording stops automatically when pre-defined max. memory space for the session has been used out. To stop recording before the end of the session, push the STOP button.

4. PLAYING BACK

4.1 To start playback push the PLAY button. During playback the LED (MON) keeps on.

4.2 Playback automatically stops when the end of recorded phrase has been reached. To stop playback before the end of the session, use the STOP button.

5. PAUSING RECORD/PLAYBACK

5.1 Pushing the PAUSE button while recording or playing back suspends the ongoing operation.

5.2 The suspended operation can be resumed by pushing the PAUSE button again.

6. CONTROLLING ADDRESS

To control ML2500 recording and playback operation, you need to know two addresses for each phrase, the Start Address and the Stop Address.

6.1 Usable Memory Space per Channel

To find out usable memory space per channel, divide the total memory capacity (1M-bit Cell) by the number of channels. However, when more than 1 channel are used, you have to allocate the last 1-sector memory sapce (3200 bits) of each channel's memory space to dummy recording space.

In other words, usable memory space per channel is:

when 1 channel only is used Memory space per channel = 1M/number of channel

when more than 1 channel are used Memory space pre channel = 1M/number of channels -3200

6.2 Controlling the Start Address

When n channels are used, each memory space, an equally divided portion by n, is assigned in sequential order from the starting of memory to CH1, CH2, ..., CHn.

Therefore, the Start Address of CHm can be calculated by the following formula:

Exrternally Addressable Address = 1M (Whole Addressable Address)/200 (Word Line) = 5120 = 1400h

CHm Start Address = (1400h/n) * (m-1)

However, the actual address input by using the STADR or SPADR command has to be adjusted as in the following table because no address higher than 27h is availabel (Address Skip).

Calculated address	ML2500 Input Address	Selected Array
0000	0000	Array 1
0001	0001	
⋮	⋮	
04FF	04FF	
0500	0800	Array 2
0501	0801	
⋮	⋮	
09FF	0CFF	
0A00	1000	Array 3
0A01	1001	
⋮	⋮	
0EFF	14FF	
0F00	1800	Array 4
0F01	1801	
⋮	⋮	
13FF	1CFF	

In short, the following co-relationship exists between the calculated address and the actual input address:

Where calculated address is 0000 to 04FF (When Array 1 selected); ML2500 Input Address = Calculated address

Where calculated address is 0500 to 09FF (When Array 2 selected); ML2500 Input Address = Calculated address + 0300h

Where calculated address is 0A00 to 0EFF (When Array 3 selected); ML2500 Input Address = Calculated address + 0600h

Where calculated address is 0F00 to 13FF (When Array 4 selected); ML2500 Input Address = Calculated address + 0900h

6.3 Calculating the Stop Address

(For recording)

The Stop Address can be calculated in the same manner as with the Start Address.

when 1 channel only is used Channel 1 Stop Address = 13FFh

when more than 1 channel are used Channel m Stop Address = $(1400h/n) * m - 0011h$

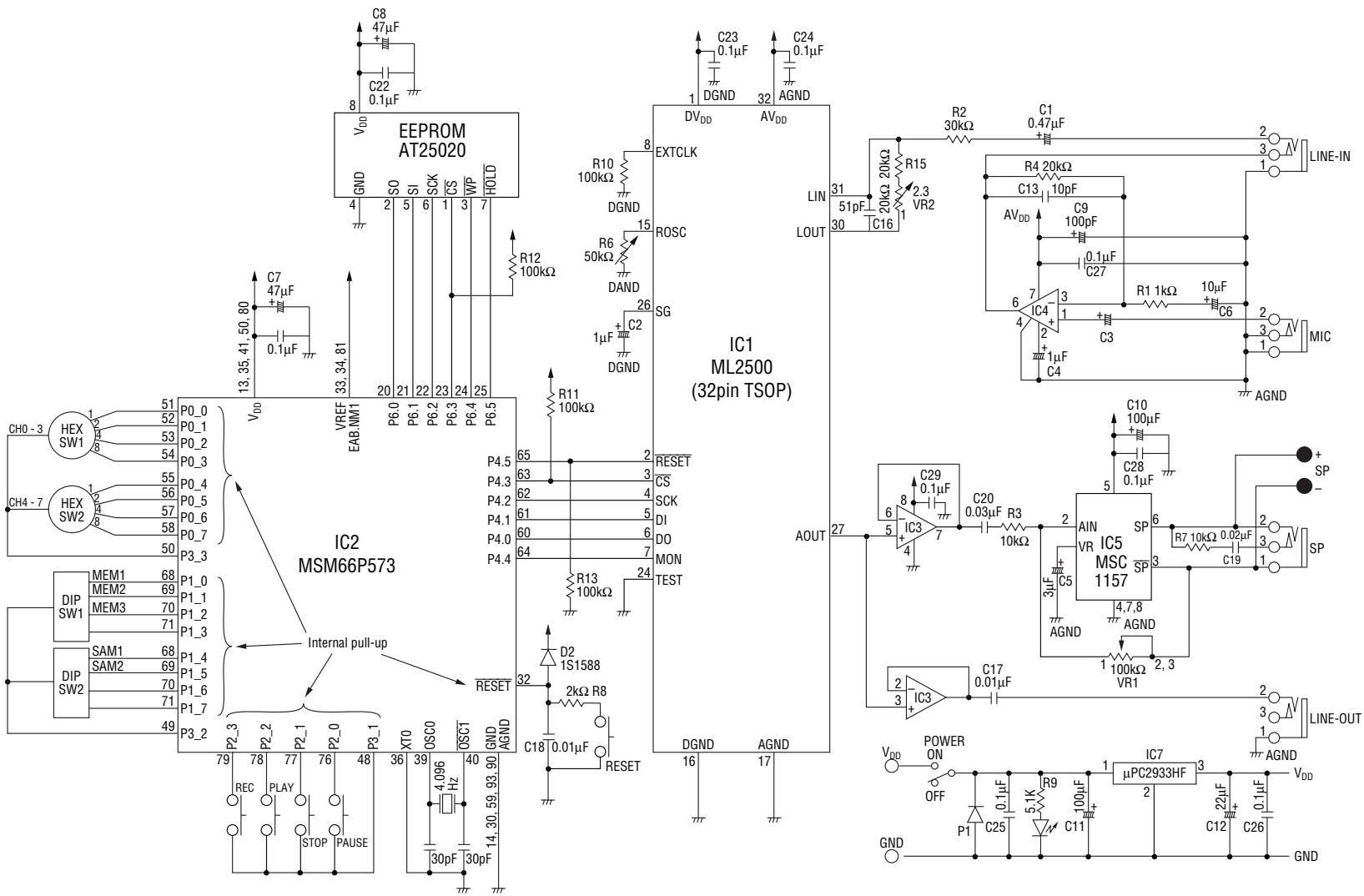
As the last sector of each channel is used as dummy recording space, you need to specify the Stop Address at the address 1 sector before the last address.

The actual input address by the STADR command can be found out in the list appeared earlier in this document.

(For Playback)

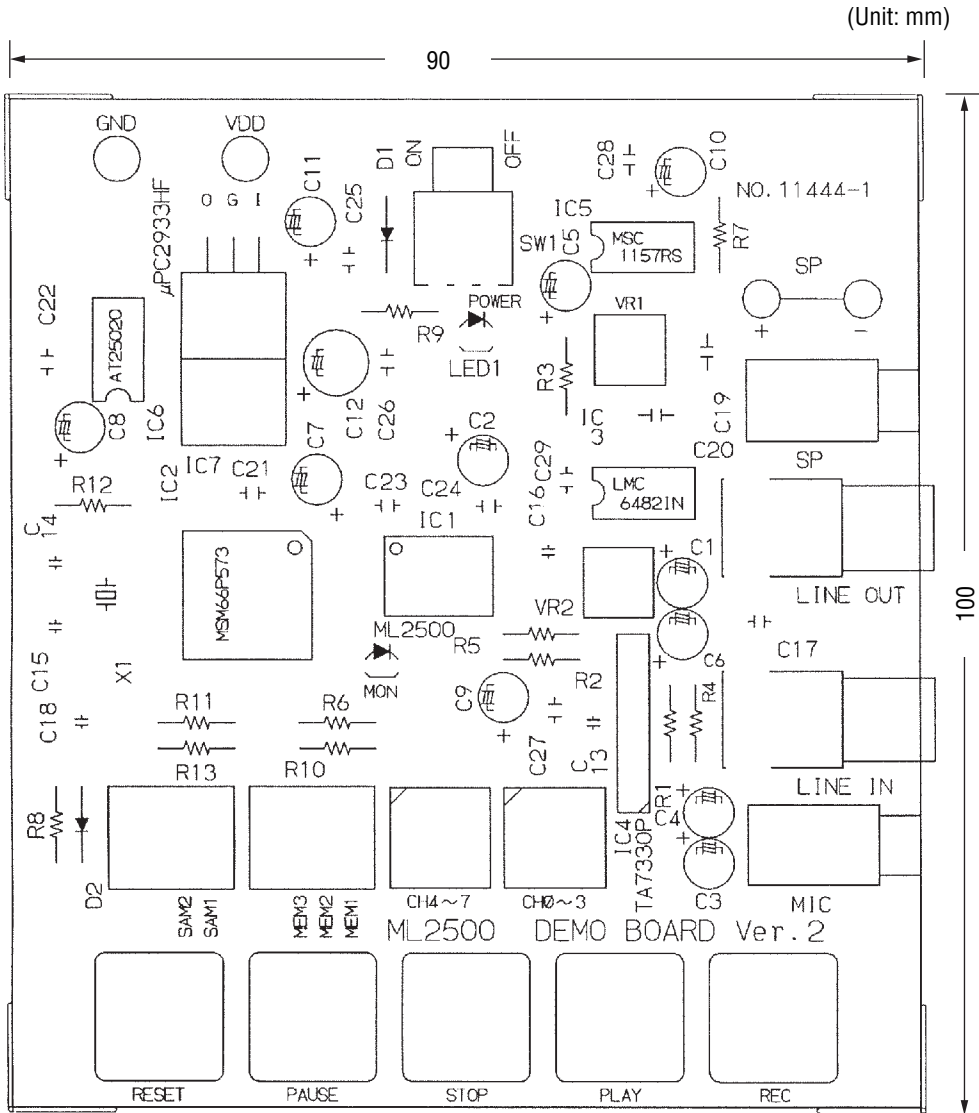
The Stop Address can be obtained by running the RDADR command after each recording session. The address obtained has to be stored in the external Flash memory.

7. CIRCUIT DIAGRAM

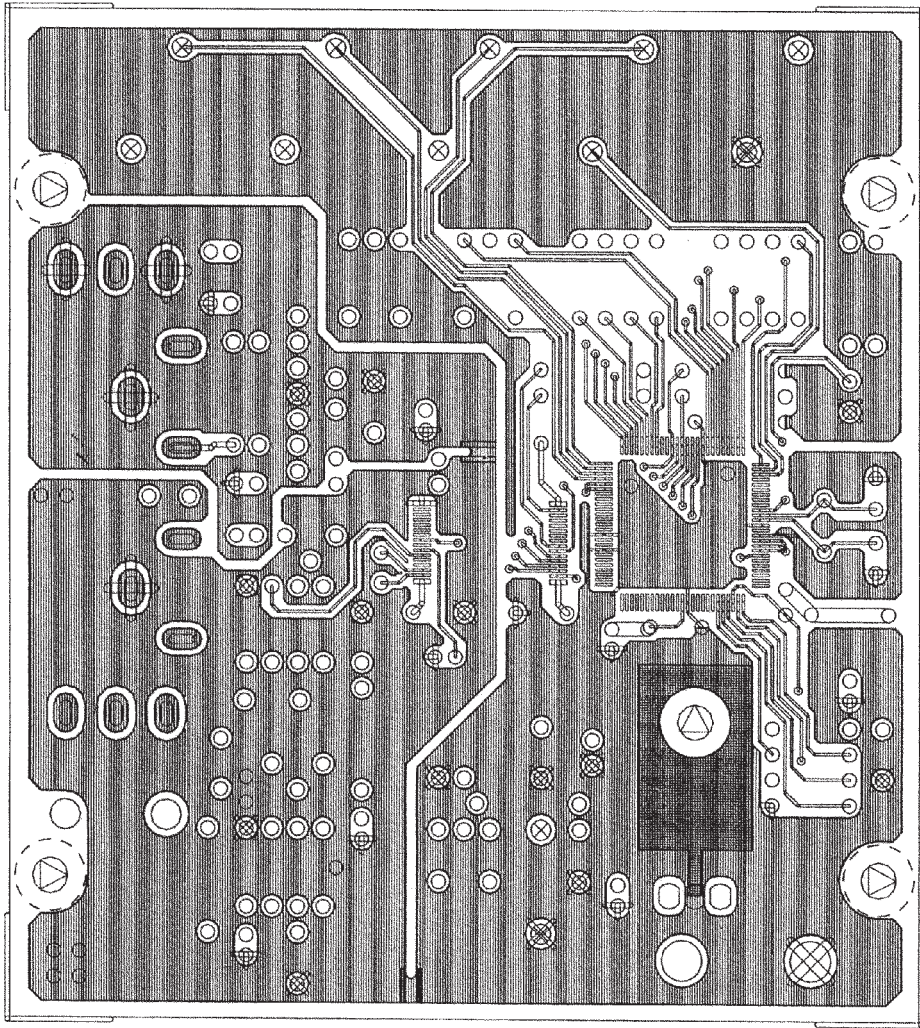


8. PATTERN LAYOUT

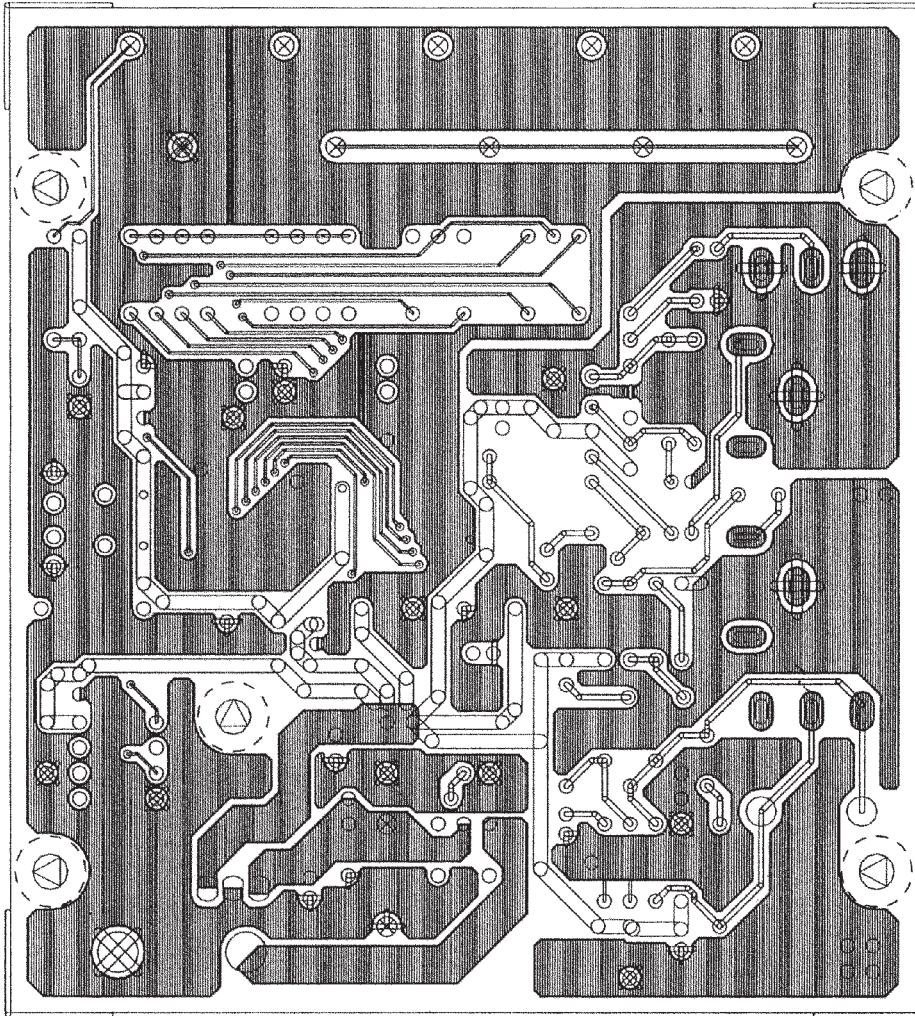
8-1. Silk Screen



8-2. Mounting Side



8-3. Solder Side



NOTICE

1. The information contained herein can change without notice owing to product and/or technical improvements. Before using the product, please make sure that the information being referred to is up-to-date.
2. The outline of action and examples for application circuits described herein have been chosen as an explanation for the standard action and performance of the product. When planning to use the product, please ensure that the external conditions are reflected in the actual circuit, assembly, and program designs.
3. When designing your product, please use our product below the specified maximum ratings and within the specified operating ranges including, but not limited to, operating voltage, power dissipation, and operating temperature.
4. Oki assumes no responsibility or liability whatsoever for any failure or unusual or unexpected operation resulting from misuse, neglect, improper installation, repair, alteration or accident, improper handling, or unusual physical or electrical stress including, but not limited to, exposure to parameters beyond the specified maximum ratings or operation outside the specified operating range.
5. Neither indemnity against nor license of a third party's industrial and intellectual property right, etc. is granted by us in connection with the use of the product and/or the information and drawings contained herein. No responsibility is assumed by us for any infringement of a third party's right which may result from the use thereof.
6. The products listed in this document are intended for use in general electronics equipment for commercial applications (e.g., office automation, communication equipment, measurement equipment, consumer electronics, etc.). These products are not authorized for use in any system or application that requires special or enhanced quality and reliability characteristics nor in any system or application where the failure of such system or application may result in the loss or damage of property, or death or injury to humans. Such applications include, but are not limited to, traffic and automotive equipment, safety devices, aerospace equipment, nuclear power control, medical equipment, and life-support systems.
7. Certain products in this document may need government approval before they can be exported to particular countries. The purchaser assumes the responsibility of determining the legality of export of these products and will take appropriate and necessary steps at their own expense for these.
8. No part of the contents contained herein may be reprinted or reproduced without our prior permission.
9. MS-DOS is a registered trademark of Microsoft Corporation.

Copyright 1999 Oki Electric Industry Co., Ltd.