



Room Temperature Sensors

QAA24/AP
QAA25/AP

- Landis & Staefa Ni 1000 sensing element
- Units with (QAA25/AP) and without (QAA24/AP) setpoint adjuster

Use

In HVAC plants to acquire and adjust the room temperature, especially where a high level of comfort is required.

Suitable for all systems and units that are capable of handling Landis & Staefa Ni 1000 signals, such as RWC..., RWD..., RWX62.. and RL..100.

Functions

The sensor acquires the room temperature by means of its Landis & Staefa Ni 1000 sensing element. The resistance value changes according to the ambient temperature.

Type summary

Type reference	Description
QAA24/AP	Room temperature sensor
QAA25/AP	Room temperature sensor with setpoint adjuster from 5 to 35 °C
ARG70	Adapter plate 120 x 120 mm for 4" x 4" conduit boxes
ARG70.1	Adapter plate 96 x 120 mm for 2" x 4" conduit boxes

Mechanical design

The units have been designed for wall mounting. They are suitable for use with most commercially available recessed conduit boxes. The cables can be introduced from the rear (concealed wiring).

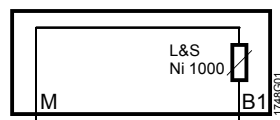
Installation notes

Location	On a flat inner wall of the space to be heated or air conditioned. Not in recesses, shelves, not behind curtains, not opposite or near heat sources. The unit must not be exposed to direct solar radiation.
Notes	<ul style="list-style-type: none"> • When installing the unit, fix the baseplate first, then hook on the body and make the electrical connections. Then fit the cover and secure it. • The end of the conduit at the sensor must be sealed to prevent false measurements due to draughts through the conduit. • The permissible environmental conditions should be observed. • Installation instructions are printed on the packing. •

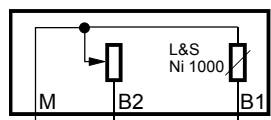
Technical data

General unit data	Operating range	0...50 °C
	Setting rang for QAA25/AP	5...35 °C
	Temperature setpoint: 5 °C	corresponding resistance: 100 Ω
	35 °C	660 Ω
	Sensing element	Landis & Staefa Ni 1000 (1000 Ω at 0 °C)
	Maximum voltage	AC 24 V
	Time constant (with air movement)	
	QAA24/AP	approx. 7 min
	QAA25/AP	approx. 7 min
Connection	Terminals for cross-sectional areas of	2 x 1.5 mm ² or 1 x 2.5 mm ²
Environmental conditions	Operation	to IEC 721-3-3
	Climatic conditions	class 3K5
	Temperature	0...50 °C
	Humidity	<85 % r. h.
	Pollution degree	normal, to EN 60730
	Transport	to IEC 721-3-2
	Climatic conditions	class 2K3
	Temperature	-25...+65 °C
	Humidity	<95 % r. h.
	Mechanical conditions	class 2M2
Requirements	Safety class	III to EN 60 730
	Degree of protection	IP 30 to EN 60 529
	CE conformity	to EMC directive 89/336/EEC
Miscellaneous	Weight	approx. 0.1 kg
	Colour	white, NCS S 0502-G (RAL 9003)

Internal diagram



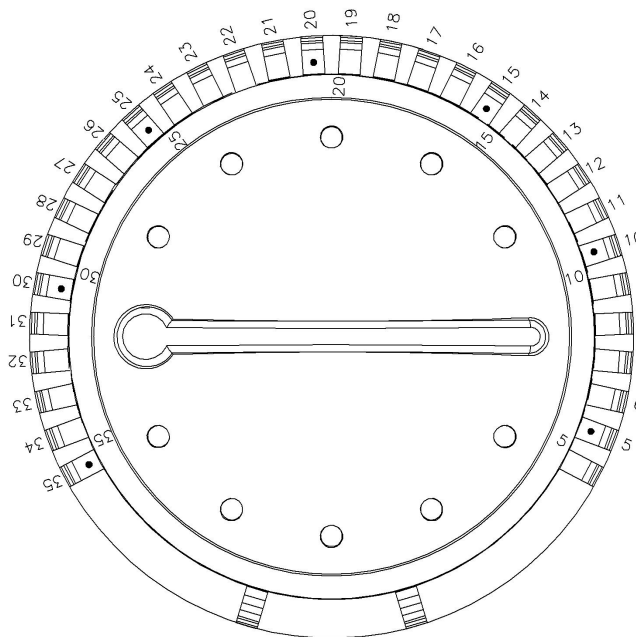
QAA24/AP



QAA25/AP

B1 Room temperature signal
 B2 Setpoint signal
 M Measuring neutral

Knob slots with temperature position



Dimensions

Unit and Baseplate

