

EL20 Series Load Cells

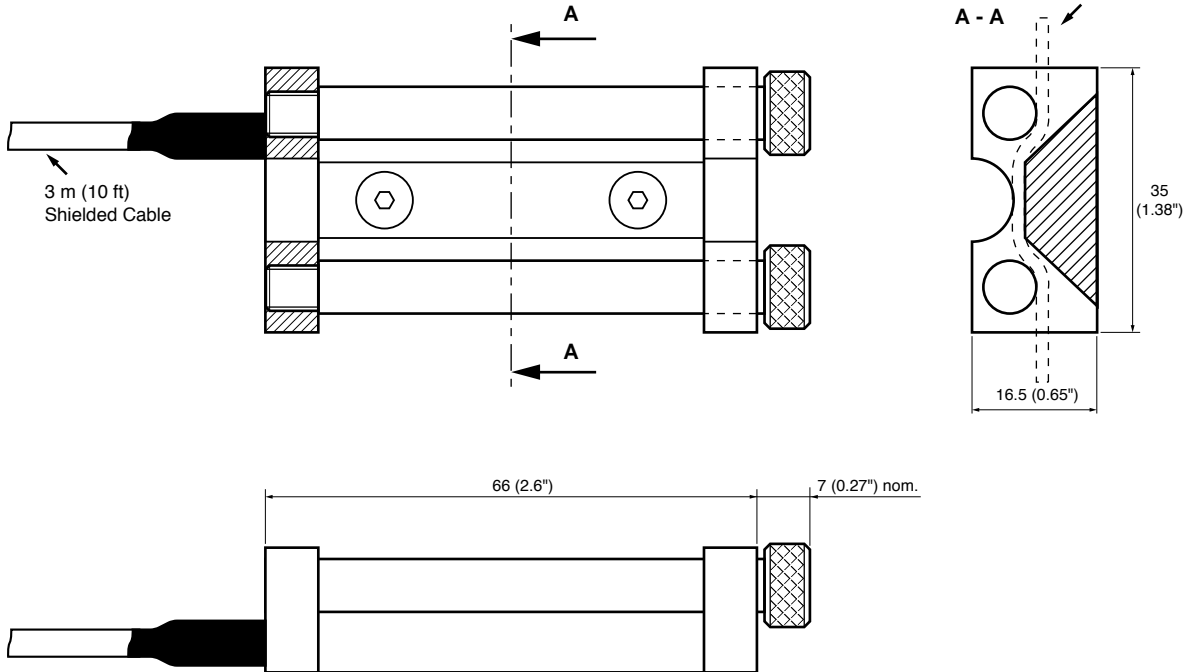


Seat Belt & Strap Tension - High Stability

EL20

EL20

Seat belt & Strap thickness: 2.5 mm (0.1") max.
 Seat belt & Strap width: 49 mm (1.9") max. / 44 mm (1.7") min.



Dim: mm (inches)

EL20 Series

Lb RANGES "FS"	N RANGES "FS"	OVERRANGE LIMIT	OUTPUT "FSO" nom.	DEFLECTION AT "FS" mm (inches)
1000	5000	2x FS	1.5 mV/V	0.014 (0.0006")
3200	16000	1.5x FS	2 mV/V	0.006 (0.00025")
5000	25000	1.5x FS	2 mV/V	0.004 (0.00015")

EXCITATION:	10VDC
BRIDGE IMPEDANCE:	350 Ω nom.
SENSING TECHNOLOGY:	Metallic Foil
COMBINED NON-LINEARITY & HYSTERESIS:	±3%FSO
THERMAL ZERO SHIFT:	±0.02%FSO/°C (±0.01%FSO/°F)
THERMAL SENSITIVITY SHIFT (TSS):	±0.02%/°C (±0.01%/°F)
OPERATING TEMPERATURE:	-40°C to 120°C (-40°F to 250°F)
COMPENSATED TEMPERATURE:	0°C to 60°C (32°F to 140°F)
ZERO OFFSET AT 20°C (70°F):	±2%FSO
MASS:	100 grams (without cable)
MODE:	Tension
CALIBRATION:	In Tension
BODY MATERIAL:	Titanium Alloy

"Off-the-Shelf" Stocking Program

 www.entran.com	EL20 LOAD CELLS Seat Belt & Strap Tension High Stability	Entran Sensors & Electronics USA: Fairfield, NJ UK: Garston, Watford, Herts, England Europe: Les Clayes-sous-Bois, France		
		SPECIFICATION	ISSUE	PAGE
		EL20S001U	P02	1 of 2

EL20 specifications continued ...

Options and Accessories:

EXCITATION VOLTAGE:

STANDARD
V00

= **10VDC**

= Replace "00" with Excitation between 5 and 10.
If less than 10, Sensitivity (FSO) will decrease accordingly.

V*

= Non-standard Excitation with standard FSO and non-standard TSS, contact Entran

SPECIAL CABLE LENGTH:

L00F
L00M

= Replace "00" with total length in feet.

= Replace "00" with total length in meters.

Model Number construction:

EL20
Series

-

16K
Range

N
Units

-

V5/L6M
Options

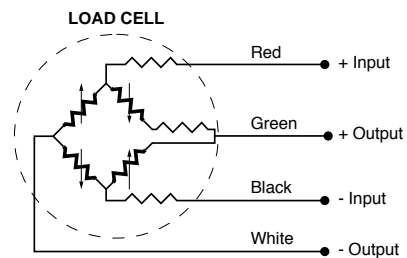
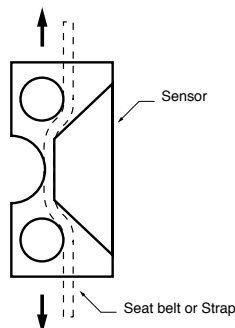
(K used for 1000
Ex.: 1K)

N=Newtons
L=Pounds

L00F or L00M
V5 to V10 or V*

"Off-the-Shelf" Stocking Program

Mounting & Wiring:



Entran®

EL20 LOAD CELL

SPECIFICATION

ISSUE

PAGE

EL20S001U

P01

2 of 2