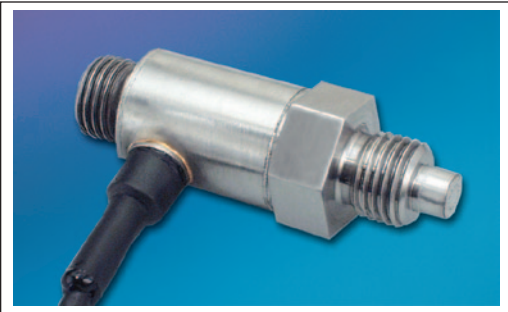




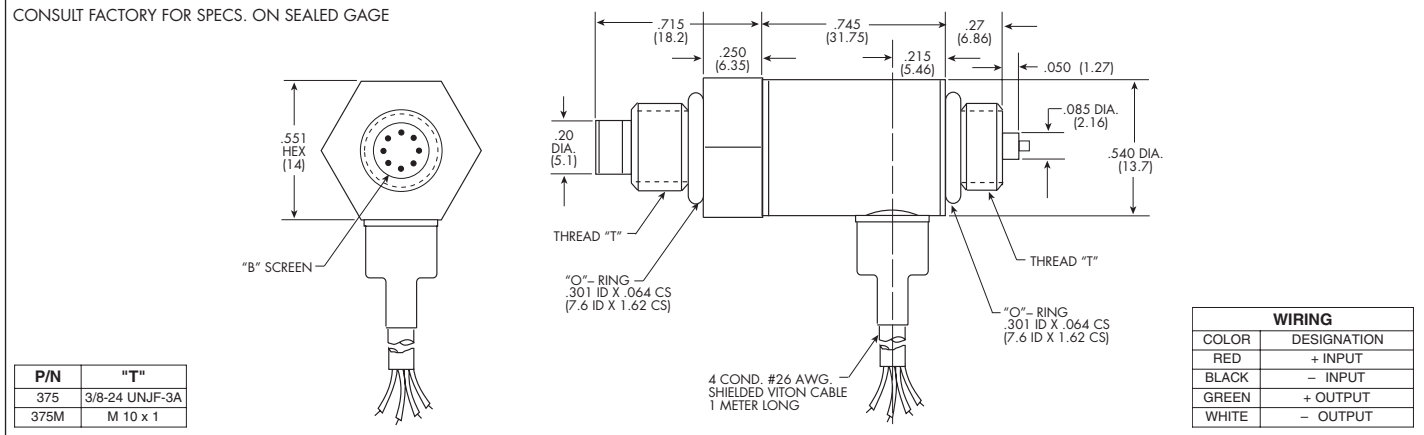
DIFFERENTIAL IS® PRESSURE TRANSDUCER

XTL-3-375 (M) SERIES

- Robust Construction
 - Automotive and Flight Test Applications
 - Intrinsically Safe Leadless Technology
- Applications Available (i.e. IS-XTL-3-375)



The XTL-3-375 series is a non-amplified differential transducer. The transducer has no internal electronics making it extremely rugged and able to endure severe vibrations. The Kulite patented leadless sensing element is extremely accurate even at low pressures making the XTL-3-375 ideal for low pressure differential measurements in automotive and flight test applications.



INPUT	1.7	3.5	5	7	10	14	17	21 BAR
Pressure Range	25	50	75	100	150	200	250	300 PSI
Operational Mode	Differential							
Over Pressure	2 Times Rated Pressure							
Burst Pressure	3 Times Rated Pressure							
Pressure Media	All Nonconductive, Noncorrosive Liquids or Gases (Most Conductive Liquids and Gases - Please Consult Factory)							
Rated Electrical Excitation	10 VDC							
Maximum Electrical Excitation	15 VDC							
Input Impedance	1000 Ohms (Min.)							
OUTPUT								
Output Impedance	1000 Ohms (Nom.)							
Full Scale Output (FSO)	100 mV (Nom.)							
Residual Unbalance	± 5 mV (Typ.)							
Combined Non-Linearity, Hysteresis and Repeatability	± 0.1% FSO BFSL (Typ.), ± 0.5% FSO (Max.)							
Resolution	Infinitesimal							
Natural Frequency (KHz) (Typ.)	240	300	340	380	440	500	550	575
Acceleration Sensitivity % FS/g Perpendicular	5.0x10 ⁻³	3.0x10 ⁻³	2.3x10 ⁻⁴	1.5x10 ⁻⁴	6.4x10 ⁻⁴	1.1x10 ⁻⁴	1.0x10 ⁻⁴	4.0x10 ⁻⁵
Transverse	6.0x10 ⁻⁴	4.0x10 ⁻⁴	2.3x10 ⁻⁵	2.0x10 ⁻⁵	1.6x10 ⁻⁵	1.3x10 ⁻⁵	9.0x10 ⁻⁶	7.0x10 ⁻⁶
Insulation Resistance	100 Megohm Min. @ 50 VDC							
ENVIRONMENTAL								
Operating Temperature Range	-65°F to +350°F (-55°C to +175°C) Higher Temperature Ranges Available - Please Consult Factory							
Compensated Temperature Range	-40°F to +350°F (-40°C to +175°C)							
Thermal Zero Shift	± 1% FS/100°F (Typ.)							
Thermal Sensitivity Shift	± 1% /100°F (Typ.)							
Linear Vibration	100g Peak, Sine up to 5000 Hz							
Humidity	100% Relative Humidity							
Mechanical Shock	100g half Sine Wave 11 msec. Duration							
PHYSICAL								
Electrical Connection	4 Conductor 26 AWG Shielded Cable 1 Meter Long							
Weight	20 Grams (Max.) Excluding Cable							
Pressure Sensing Principle	Fully Active Four Arm Wheatstone Bridge Dielectrically Isolated Silicon on Silicon Patented Leadless Technology							
Mounting Torque	80 Inch-Pounds (Max.)							

Note: Custom pressure ranges, accuracies and mechanical configurations available. Dimensions are in inches. Dimensions in parenthesis are in millimeters. Continuous design life of our products is years. In special temperature ranges, our products are available for up to 1000 hours. SUNSTAR自动化 <http://www.sensor-ic.com/> TEL:0755-83376489 FAX:0755-83376182 E-MAIL: szss20@163.com KULITE SEMICONDUCTOR PRODUCTS, INC. • One Willow Tree Road • Leonia, New Jersey 07605 • Tel: 201 461-0900 • Fax: 201 461-0990 • <http://www.kulite.com>