

## SensorTool

Type 4706A

### PC Software for Setup and Evaluation of Torque Sensor Technology

SensorTool is easy-to-use software which connects following torque sensors/torque measuring flanges and devices with the PC:

- Dual-range sensor Type 4503A...
- Torque measuring flange Type 4504B... or Type 4510B...
- Torque measuring flange KiTorq Rotor Type 4550A...
- Supply and evaluation system CoMo Torque Type 4700B...
- Measuring device for strain gage sensors Type 4703B

The PC software is distinguished by following features:

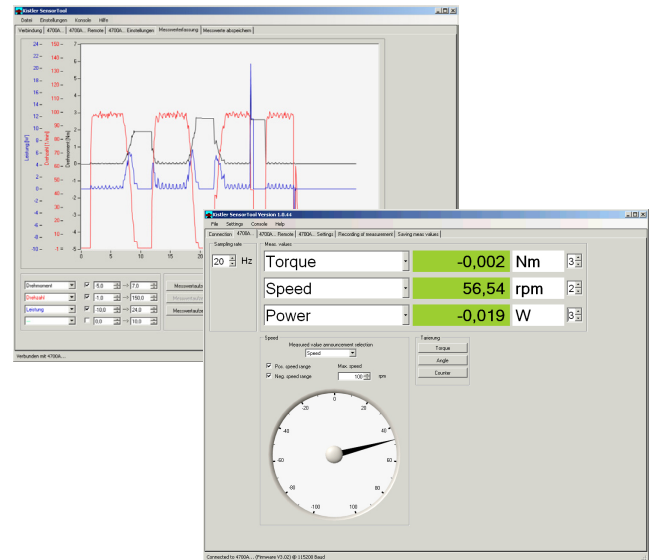
- Parameterization of instrument settings
- Numerical and graphic display of parameters
- Evaluation of measurement values and measurement value graphs
- Reading and display of sensor and instrument data
- Definition of the speed output pulses (magneto-resistive system in the Type 4504B... instrument)
- Measurement value taring
- Storage of recorded measurement graphs in text or Microsoft Excel® format
- Multi-language menu guidance (German, English)

#### Description

The SensorTool provides the user with a useful PC tool to further process sensor and measurement data of torque sensors or supply and evaluation instruments in a simple form.

As a result, the numerical and graphic display of all parameters occurring on the PC screen (torque, speed, angle of rotation, the mechanical power and the rotor temperature of torque sensors) is no longer a problem.

The PC software stores the recorded measurement graphs on the hard disk in text or Excel® format.



#### Application

The PC software can be particularly well employed in the initial setup or during the test or optimization process.

It is possible to display all relevant sensor data (e.g. serial number, sensor type, etc.) on the PC screen for a quick check of the torque sensors.

Defined test functions can be triggered in order to test the sensor.

### Menu Guidance

The connected torque sensor Type 4503A..., Type 4504B..., Type 4550A..., Typ 4510B... or the supply and evaluation instrument Type 4700B... also the measuring device for strain gage sensors Type 4703B is automatically detected in the log on window.

After successful log on, corresponding function screens are enabled that are relevant for the specific type. This excludes an overload of function carriers.

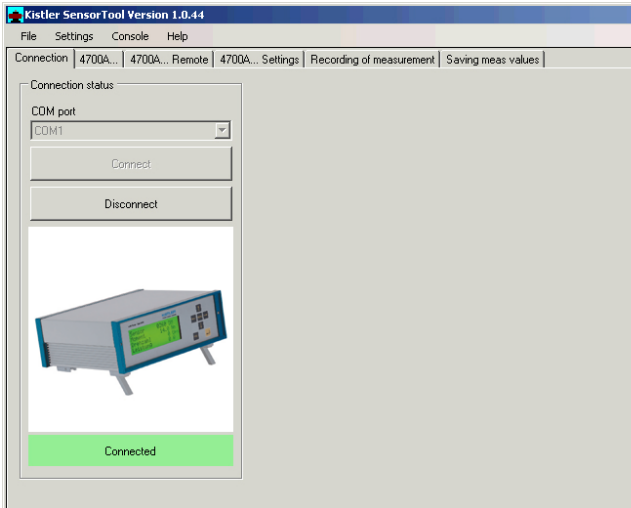


Fig. 1: Logged-on supply and evaluation instrument Type 4700B...

All parameters are shown in numerical form on the measurement value display. The refresh rate can be defined in just the same way as the type and form of a tachometer display, such as for the speed or the angle of rotation for example.

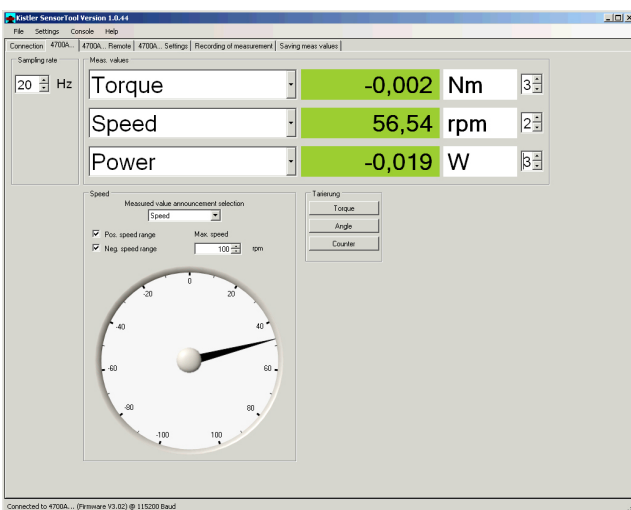


Fig. 2: Present measurement value display

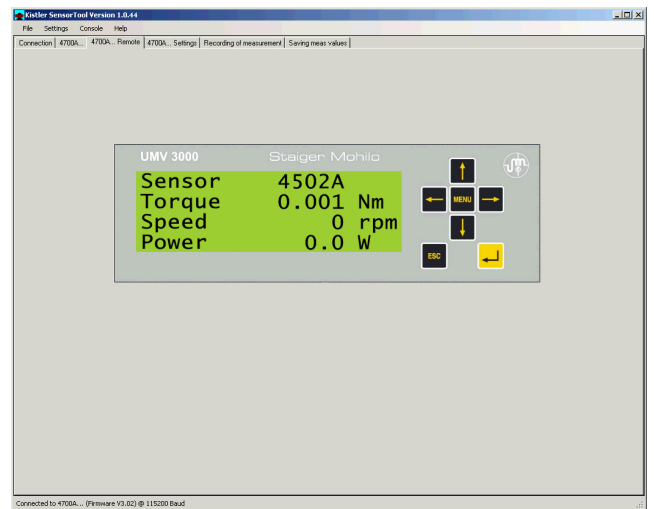


Fig. 3: Virtual instrument front panel

The supply and evaluation instrument Type 4700B... can be fully remotely controlled. All front panel keys can be controlled by PC keyboard or mouse click. The display content shows a 1:1 representation of the actual instrument.

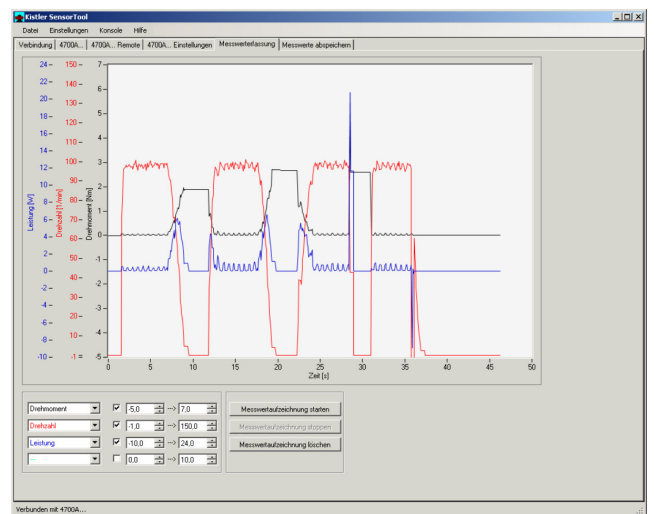


Fig. 4: Measurement value graph display and saving

Up to four different measurement parameters can be shown graphically. The recording of the displayed measurement graphs can be saved in image formats or in files for further processing. The text and Excel® format is supported.

4706A\_000-G26e-11.11

All relevant information of a torque sensor or supply and evaluation instrument (split into categories) can be displayed.

It is possible to make user settings simply and clearly by mouse click.

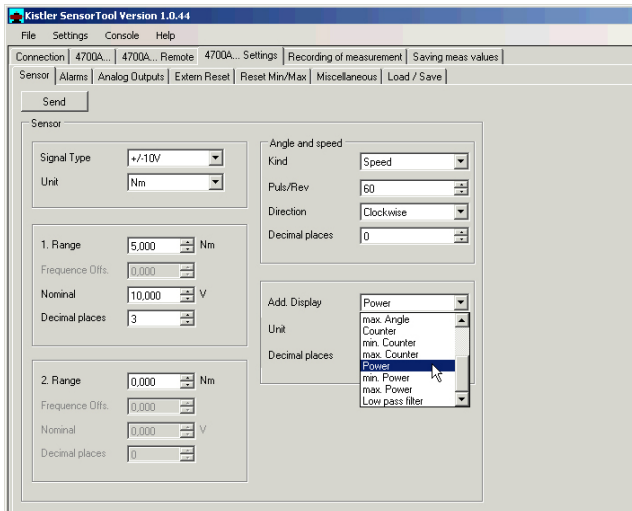


Fig. 5: Information screen

**Included Accessories**

- None

**Ordering Code**

- SensorTool, software for setup and evaluation of torque sensor

**Type 4706A**

**PC Requirements**

- Operating systems: Windows® 2000, XP and Windows® 7 with .Net 3.5
- Pentium PC 1 GHz or higher
- 10 MB of free hard disk space for the software installation
- At least 128 MB RAM
- RS-232C interface, USB
- SVGA monitor, resolution of 800x600 or higher
- Microsoft-compatible mouse

**Supported Devices**

|  |               |
|--|---------------|
| Torque sensors:                          | Type 4503A... |
|  | Type 4504B... |
|  | Type 4510B... |
|  | Type 4550A... |
| Supply and evaluation unit:              | Type 4700B... |
| Measuring device for strain gage sensors | Type 4703B    |

Windows® is a registered trade mark of Microsoft Corporation.