

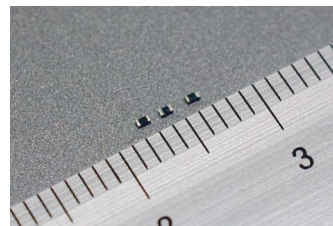


Flat Chip Fuse

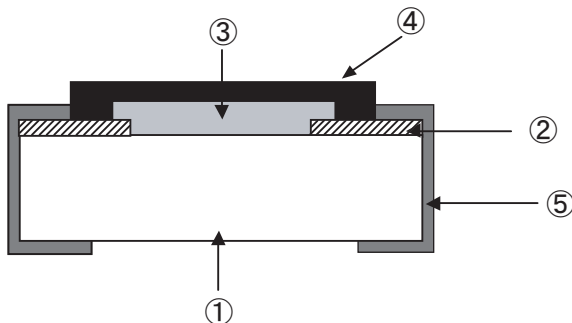
New

■ Features

- Suitable as element for protection against overcurrent applied
- Possible to save space with 1005 size chip
- Suit to reflow soldering



■ Construction



No.	Element
①	Ceramic Substrate
②	Inner Electrode
③	Fuse Element
④	Overcoat
⑤	Outer Electrode

■ Model Designation

FCL10 - **351**
 ① Model No. ② Rated Current

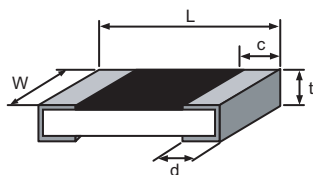
① Model No.
FCL10

② Rated Current
3 digits

■ Rating

Model No.	Size Code	Rated Current (A)	Inner Resistance (mΩ)	Rated Voltage (V)	Fusing Characteristic	Operating Temperature Range (°C)	Rated operating Temperature (°C)
FCL10-351	0402 (Inch) 1005 (mm)	0.35	650 Max.	24	To be fused within 5 seconds when 200% of rated current applied.	-55~125	70

■ Dimensions



Model No.	L	W	c	d	t
FCL10	1.00 ± 0.05	0.50 ± 0.03	0.20 ± 0.10	0.25 ± 0.10	0.35 ± 0.05

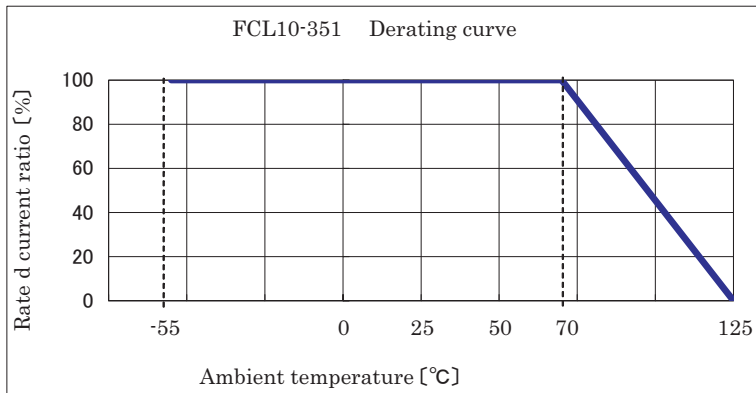
(mm)



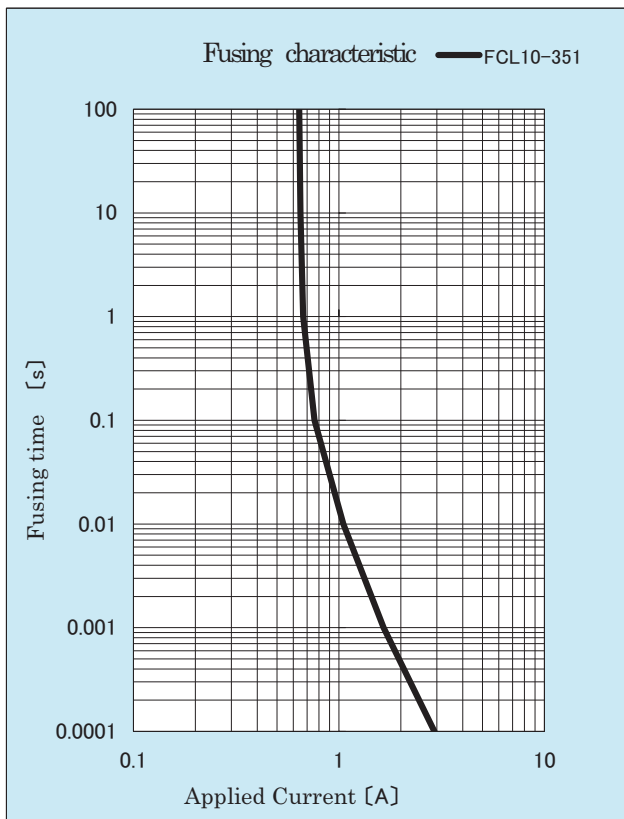
Flat Chip Fuse

New

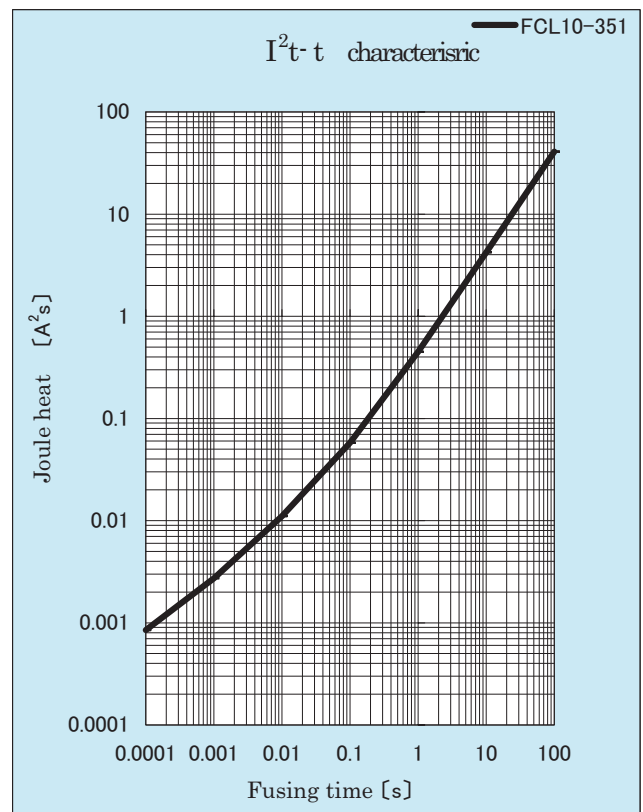
Derating



Fusing characteristic



I²t characteristic



Precaution on using chip fuse

- As for any use outside of the specification described in this catalog, please consult us in advance.
- When used in the circuit where rush current arises, please check durability fully against the rush current.
- Please do not use the fuse on primary side.
- Please check characteristic fully against expected abnormality under normal operation.
- We do not recommend soldering, reworking of fuse by soldering iron, since its temperature, time control is not clear.
- Please do not apply soldering iron directly to fuse terminal.
- Please do not reuse fuse which once mounted and removed.
- Specification described in this catalog is subject to change without prior notice.
- Please consult us in advance when considering to use in equipment involving human lives such as automotive, equipment potentially incurring enormous damage.