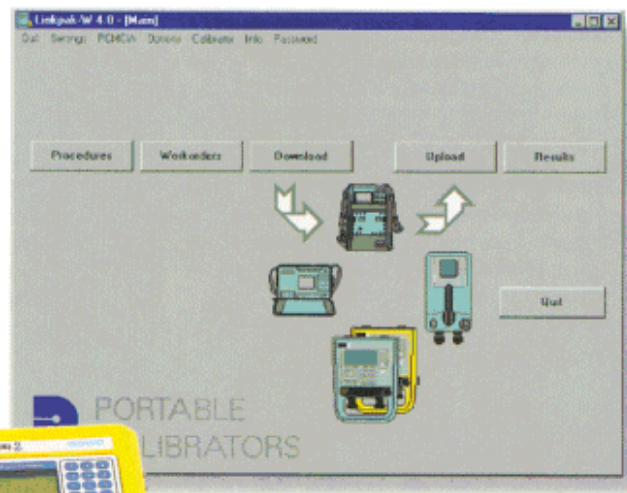


# Linkpak - W

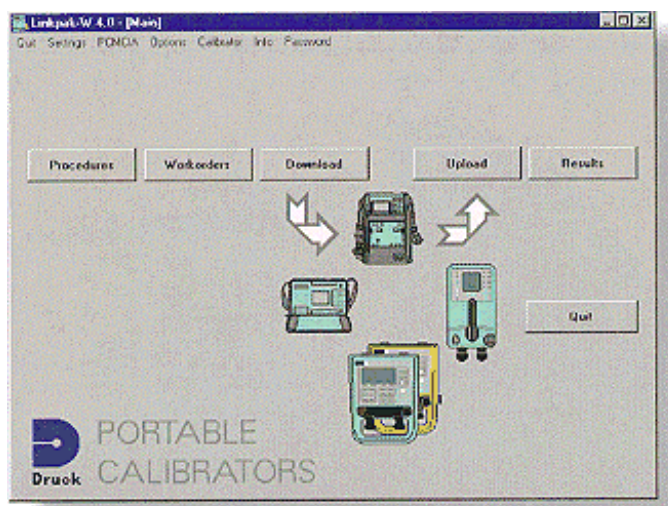
Calibration Software for Portable Calibrators

- Windows based software
- Compatible with Druck Portable Calibrators
- As Found and As Left calibrations
- Identifies calibration errors in the field
- Password protection
- No docking required (memory card)
- ISO 9000 compliant
- DBF file format and data export capability
- Supports PCMCIA and RS 232



# Linkpak - W

## Calibration Software for Portable Calibrators



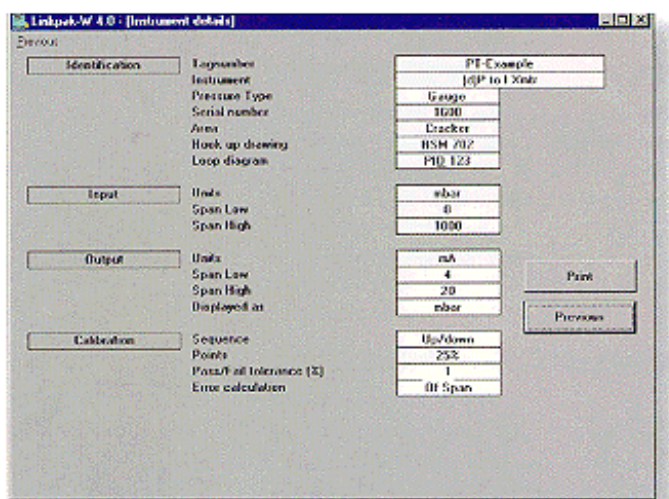
Linkpak-W Windows based software is designed to support Druck's extensive range of portable documenting calibrators. It includes an instrumentation database which makes it quick and easy to generate calibration procedures, create work orders, transfer data to and from the calibrators and to print calibration certificates. The calibration certificate contains all the relevant information required to comply with quality approvals such as ISO 9000 and FDA. Linkpak-W is easy to use without actual calibrator knowledge and links plant maintenance work to quality control and engineering. This multi-lingual software can be operated in six languages (English, French, German, Italian, Portuguese and Spanish) and can be used, for example, in process plant calibration and maintenance workshops by instrument technicians, contractors, manufacturers and service companies. It offers high productivity of calibration scheduling, calibration tasks and documentation.

### PROCEDURES

Pre-prepared calibration routines for temperature, pressure and electrical based instruments are quickly generated with individual instrument details, specific range settings and calibration strategy, to form unique test procedures. These are stored in the database for future use and can be viewed at any time.

#### Replacement instrument serial number

The instrument serial number is recorded with the procedure. At each calibration this serial number is compared with the actual serial number found and replacement instruments are highlighted.

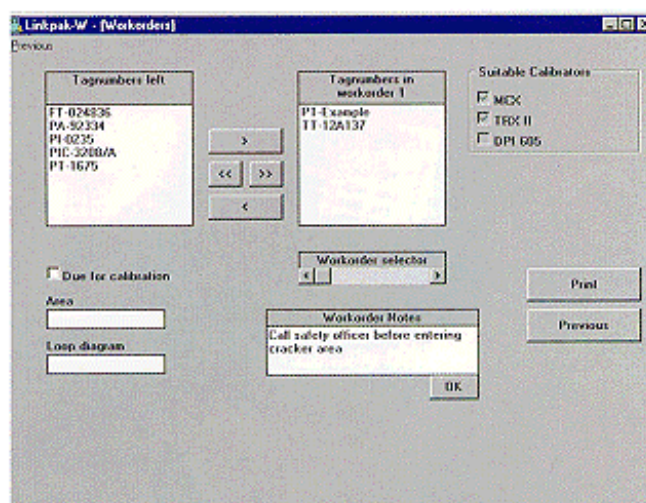


### WORKORDERS

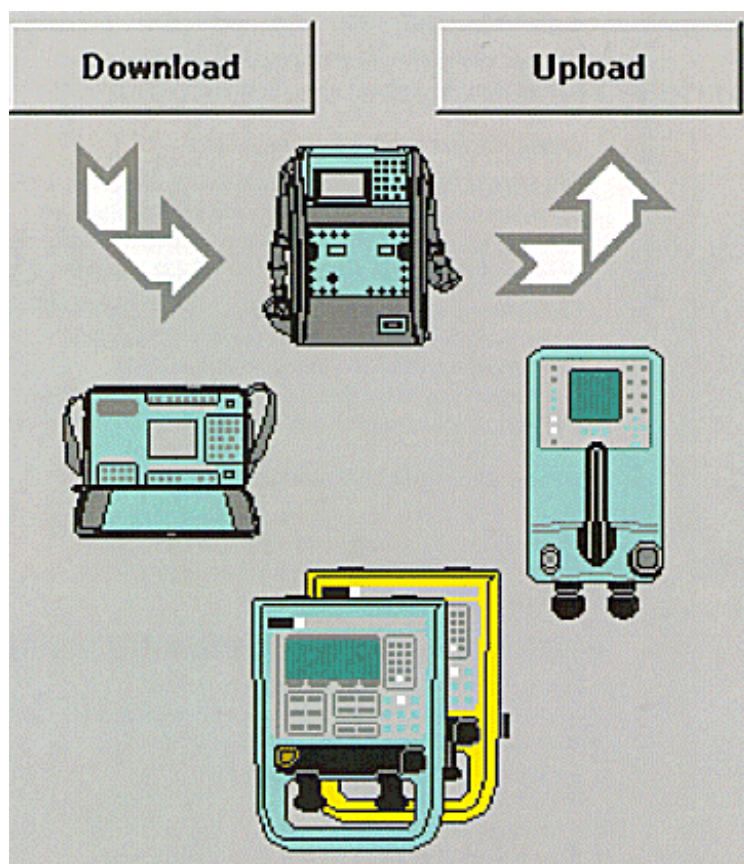
A workorder allows a selection of procedures to be grouped together, detailing the calibrations to be performed in the field. Workorders are created by the PC operator according to work schedules and could contain, for example, all the calibration procedures for an area or loop, or those to be completed by a technician in one day.

#### Time based schedules

Using the time based search facility, devices which are due for calibration can be extracted from the database. If calibrations are performed by area or loop, Linkpak-W provides filters for viewing just these specific instruments.



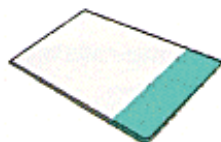




### Calibrator interface

Linkpak-W offers two methods of data transfer between the portable calibrators.

PCMCIA card



Data exchange via PCMCIA cards eliminates time consuming docking with the PC. The MCX and TRX-II calibrators need never leave the field as workorders and results files can be transferred to

and from the PCMCIA card independently of the calibrator. Results files stored on the PCMCIA card are windows compatible and DBF formatted ready for use by Linkpak-W or other software applications.

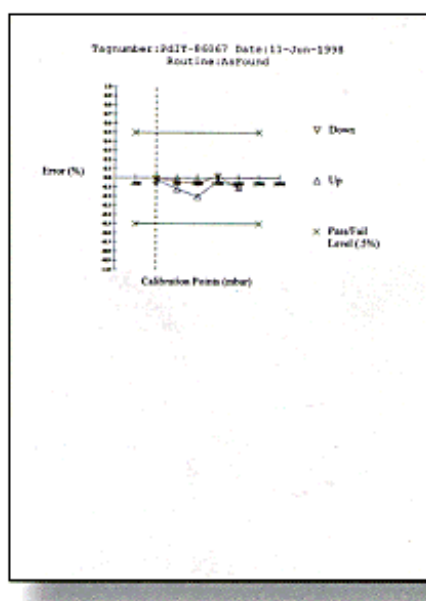
### RS 232 serial interface



Linkpak-W also supports data exchange via a standard RS 232 serial interface. This is applicable to the DPI 605 and DPI 610, but also to the MCX and TRX-II where the user PC does not support PCMCIA card technology.

## RESULTS

Calibration certificates are printed in a clear and logical format which complies with the requirements of quality approvals such as ISO 9000. As left or As Found certificates give detailed information about the device calibrated, the calibrator used, the technician and the calibration strategy, as well as detailing the actual results, errors and Pass/Fail status. Graphical analysis is provided with a zoom facility, allowing optimal resolution or scaling consistent with previous results.

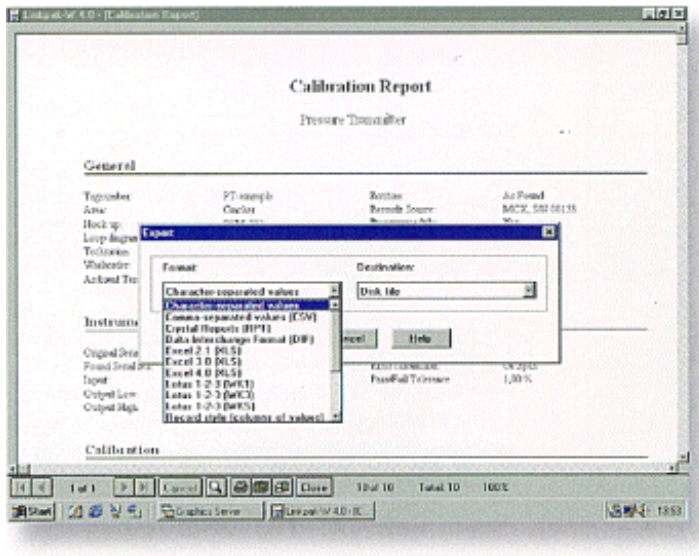


Calibration Report			
<b>General</b>			
Signature	PAT. JONES	Receiver	McFarland
Area	Radio 101	Acoustic Source	101 cm, 101 m/sec
Board #	101-101-101	Model	101
Field display	P10-101	Measurement	Interval
Technician	Q. JONES	Recording Start	11-Aug-1998
Weathering	1	Recording Time	11:30:40
Antenna Temp.	22.3	Recording Mode	Event 1
		Interval	11-Aug-1998
<b>Deployment</b>			
Original Serial No.	00101-101	Adjusted	10
Trans. Serial No.	00101-101	Sound calibration	101 cm
Depth	0 - 1001 cm (ft)	Speed of Sound	9.99 m/s
Current Log	0 m/s		
Current Wch	20 m/s		
<b>Calibration</b>			
Cal. Ref.	Depth	Time (ms)	Status
101m ref	1-1001 m/s	0.011	Pass
500 M ref	1-500 m/s	0.116	Pass
1000 M ref	1-1000 m/s	0.201	Pass
1500 M ref	1-1500 m/s	0.277	Pass
2000 M ref	1-2000 m/s	0.350	Pass
2500 M ref	1-2500 m/s	0.416	Pass
3000 M ref	1-3000 m/s	0.477	Pass
3500 M ref	1-3500 m/s	0.535	Pass
4000 M ref	1-4000 m/s	0.591	Pass
4500 M ref	1-4500 m/s	0.645	Pass
5000 M ref	1-5000 m/s	0.697	Pass
<b>Comments</b>			
<p>Transducer examined and found to be within operational limits. No adjustments made. Depth and time software system calibration was examined and found to be:</p>			
Date:	Signed:		



# Linkpak - W

## Calibration Software for Portable Calibrators



### Export function

An export function re-formats data for use with other software applications or plant maintenance systems.

### Using the DPI 610 with Linkpak-W

The DPI 610 Portable Pressure Calibrator incorporates many advanced features not normally found in calibrators of a similar price. Linkpak-W achieves the full potential from the DPI 610's data storage capability and RS 232 interface.

Calibration procedures are printed as "Workorders", for use in the field. Results are stored in the DPI 610 and later transferred to Linkpak-W, via the RS232 interface. Calibration reports can then be printed detailing the input and output values recorded in the field.

### Intecal-w calibration management software

Intecal-W Windows based software builds on the concepts of Linkpak-W, supporting both laboratory and field calibrators with extensive management and analysis features.

## LINKPAK-W COMPATIBLE CALIBRATORS



### DPI 605 High Precision Portable Pressure Calibrator.

- -1 to 20 bar pneumatic pressure source.
- Ranges -1 to 700 bar.
- 0.025% Rdg accuracy.
- RS 232 Interface.
- Intrinsically safe version available.



### MCX High Precision Multifunction Calibrator.

- T/C's, RTD's, mA, mV/V, ohms, frequency.
- Pressure - 1 to 350 bar.
- Switch testing.
- PCMCIA card and RS 232.
- Smart HART® communicator.



### DPI 610 Portable Pressure Calibrator.

- -1 to 20 bar pneumatic source or 0 to 400 bar hydraulic source.
- Ranges -1 to 700 bar.
- 0.025% FS accuracy.
- RS 232 interface.



### TRX-II Portable Multifunction Calibrator.

- T/C's, RTD's, mA, mV/V, ohms, frequency.
- Pressure -1 to 700 bar.
- Switch testing.
- PCMCIA card and RS 232.

## SYSTEM REQUIREMENTS

To run Linkpak-W you will require the following:-

- An IBM compatible PC with a 486 processor or higher.
- Microsoft Windows 3.1(1), 95 NT 3.51 or NT 4.0.
- A hard disk with at least 5MB of free space.
- A 3½ " floppy disk drive.
- A mouse or similar pointing device.
- If using an MCX or TRX-II a PCMCIA card slot is also recommended.

## ORDERING INFORMATION

Please state the following:-

- 1) **LINKW** for the MCX, TRX-II, DPI 605 and DPI 610. Includes a PCMCIA card with release key for one MCX or TRX-II, RS 232 cables/port adaptor (DPI 605 RS 232 cable supplied with the instrument) and handbook.

*Note: To use with multiple MCX/TRX-II contact Druck.*

- 2) **LPDPI** for the DPI 605 and DPI 610 only. Includes the full software and items listed for LINKW, but not the PCMCIA card or RS 232 cables for the MCX or TRX-II.

*Note: To upgrade to LINKW contact Druck.*

**Continuing development sometimes necessitates specification changes without notice.**



### Druck Limited

Fir Tree Lane, Groby  
Leicester LE6 0FH England  
Tel: + 44 (0) 116 231 7100  
Fax: + 44(0) 116 231 7103  
E-mail: sales@druck.com  
Internet: www.druck.com

### Agent

**SUNSTAR 商斯达实业集团**是集研发、生产、工程、销售、代理经销、技术咨询、信息服务等为一体的高科技企业，是专业高科技电子产品生产厂家，是具有 10 多年历史的专业电子元器件供应商，是中国最早和最大的仓储式连锁规模经营大型综合电子零部件代理分销商之一，是一家专业代理和分销世界各大品牌 IC 芯片和电子元器件的连锁经营综合性国际公司，专业经营进口、国产名厂名牌电子元件，型号、种类齐全。在香港、北京、深圳、上海、西安、成都等全国主要电子市场设有直属分公司和产品展示展销窗口门市部专卖店及代理分销商，已在全国范围内建成强大统一的供货和代理分销网络。我们专业代理经销、开发生产电子元器件、集成电路、传感器、微波光电元器件、工控机/DOC/DOM 电子盘、专用电路、单片机开发、MCU/DSP/ARM/FPGA 软件硬件、二极管、三极管、模块等，是您可靠的一站式现货配套供应商、方案提供商、部件功能模块开发配套商。商斯达实业公司拥有庞大的资料库，有数位毕业于著名高校——有中国电子工业摇篮之称的西安电子科技大学（西军电）并长期从事国防尖端科技研究的高级工程师为您精挑细选、量身订做各种高科技电子元器件，并解决各种技术问题。

更多产品请看本公司产品专用销售网站：

商斯达中国传感器科技信息网：<http://www.sensor-ic.com/>

商斯达工控安防网：<http://www.pc-ps.net/>

商斯达电子元器件网：<http://www.sunstare.com/>

商斯达微波光电产品网：[HTTP://www.rfoe.net/](http://www.rfoe.net/)

商斯达消费电子产品网：<http://www.icasic.com/>

商斯达实业科技产品网：<http://www.sunstars.cn/>

传感器销售热线：

地址：深圳市福田区福华路福庆街鸿图大厦 1602 室

电话：0755-83370250 83376489 83376549 83607652 83370251 82500323

传真：0755-83376182 (0) 13902971329 MSN: [SUNS8888@hotmail.com](mailto:SUNS8888@hotmail.com)

邮编：518033 E-mail:[szss20@163.com](mailto:szss20@163.com) QQ: 195847376

深圳赛格展销部：深圳华强北路赛格电子市场 2583 号 电话：0755-83665529 25059422

技术支持：0755-83394033 13501568376

欢迎索取免费详细资料、设计指南和光盘；产品凡多，未能尽录，欢迎来电查询。

北京分公司：北京海淀区知春路 132 号中发电子大厦 3097 号

TEL: 010-81159046 82615020 13501189838 FAX: 010-62543996

上海分公司：上海市北京东路 668 号上海赛格电子市场 2B35 号

TEL: 021-28311762 56703037 13701955389 FAX: 021-56703037

西安分公司：西安高新开发区 20 所(中国电子科技集团导航技术研究所)

西安劳动南路 88 号电子商城二楼 D23 号

TEL: 029-81022619 13072977981 FAX:029-88789382