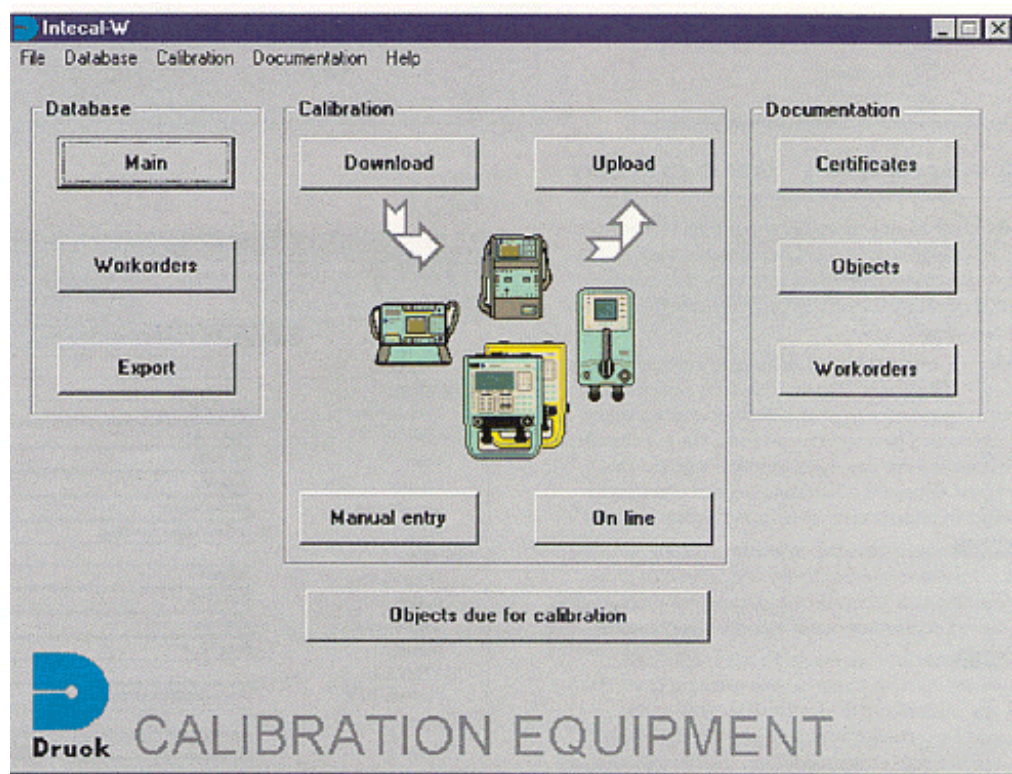


Intecal - W

Calibration Management Software

- Supports Druck Portable Calibrators
- Supports Druck Workshop Calibrators
- Supports any calibrator by manual data entry
- Reduces calibration cost, eliminates errors
- Four level security, protected calibration data
- PCMCIA card and RS232 data transfer
- Quick to install, easy to learn and use



Intecal - W

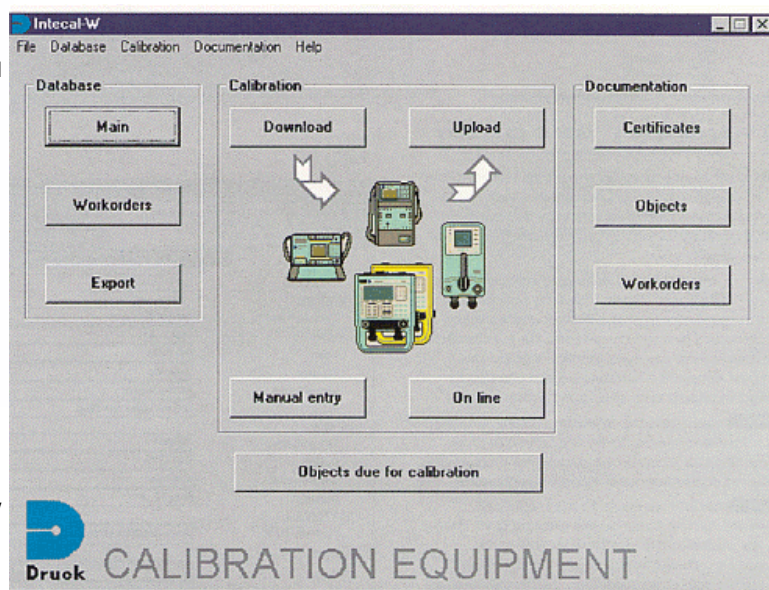
Calibration Management Software

Intecal-W is an easy to use calibration management software for generating calibration procedures, scheduling work and documenting results. It is designed for efficient calibration and management of process and industrial instrumentation by technicians, contractors, manufacturers and service companies. Druck offer the most comprehensive range of pressure and temperature calibration equipment and Intecal-w supports these products to give Druck users a significant edge in the global market by:

- Increasing calibration/maintenance productivity.
- Optimizing production quality.
- Minimizing production costs.
- Reducing the burden of ISO 9000 and similar standards.
- Reducing documentation time and errors.

System security

Calibration software is only as good as its protection against unauthorized entry and accidental change. Intecal-W features a four level security system for assigning user rights from fully protected read only to total system manipulation. The log-on passwords are also used to authorize calibrations both in the workshop and in the field.



INSTRUMENT RECORDS

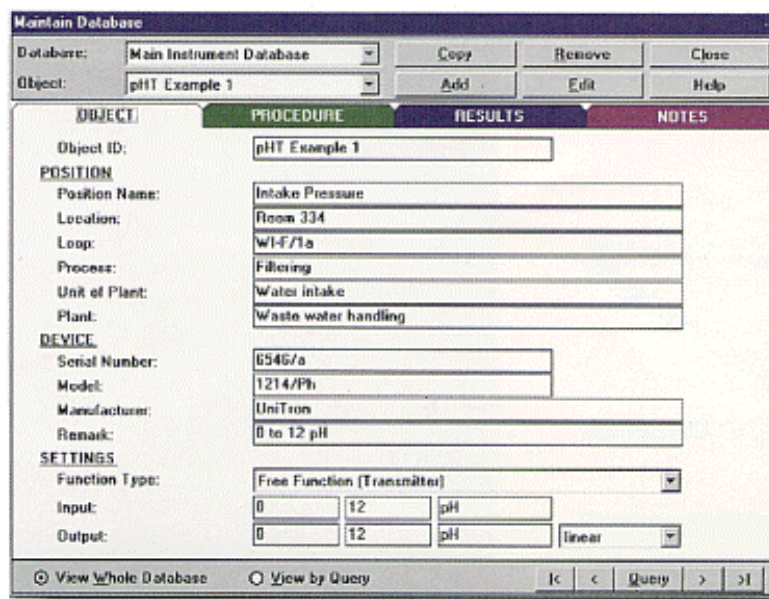
For each instrument in the database 'index cards' fully define the object, its calibration results and text notes. This ergonomically designed card system is instantly familiar, being representative of conventional card indexes, and as such is very easy to use.

The **OBJECT** card defines an instrument from two distinct perspectives 'position' and 'device'. This suits both installed instruments as found on a process plant, but also workshop returns as maintained by a service company. For any object the input and output settings are quickly configured from pre-defined function types. Free functions are also provided for non-specified instruments such as pH and humidity sensors.

The **PROCEDURE** card details the calibration strategy including the period, calibration points, accuracy and calibrators to be used. A large text area is also provided for written instructions and these can be copied from other Windows applications.

The **RESULTS** card shows the As Found and As left calibration results, both in numerical and graphical form. For traceability the calibration date and serial number of the calibrator used are recorded along with the identity of the technician and the authorizing supervisor. These identities are linked to the security passwords and cannot be tampered with.

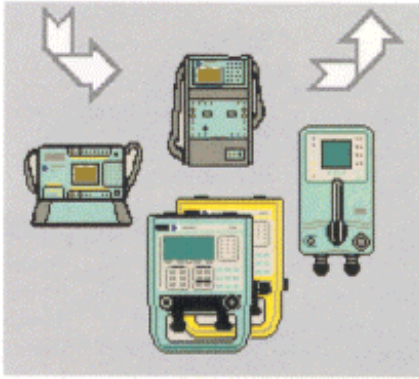
The **NOTES** card is a large text field for recording information pertinent to the history and service record of the object.



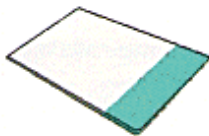
FIELD CALIBRATION

Download

Upload



Druck portable documenting calibrators are programmed with object lists and calibration procedures. In the field these routines are executed fully automatically for temperature and electrical calibrations or semi-automatically for pressure calibrations where manual setting is required. In support of Druck's range of portable documenting calibrators Intecal-W offers two methods for data transfer.



PCMCIA card

Data exchange via PCMCIA cards
Eliminates time consuming docking with the PC. The MCX

and TRX-11 calibrators need never leave the field as workorders and results can be transferred to and from the PCMCIA card independently of the calibrator.

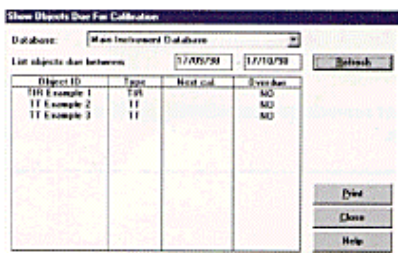


RS 232

Data exchange via the standard computer serial interface is supported for the full range of field portable documenting calibrators.

TIME BASED SCHEDULE

A time based search facility reports objects due or overdue for calibration. This simple query screen is a powerful resource management tool.



AUTOMATIC WORKSHOP CALIBRATION

On line

Druck workshop calibrators installed with an RS 232 serial interface are supported through on-line data transfer. This bi-directional communication allows hands free calibration according to pre-defined procedures. The software shows the results in 'real time' with the calculated errors and at the end of each calibration the pass/fail status is reported.

MANUAL CALIBRATION

Manual entry

Calibrators without a serial communication link, for example, deadweight testers, are supported with a manual data entry facility. Calibration results are entered as the test proceeds or alternatively results recorded from field calibrations, using for example a DPI 601, can be entered later. This features provides total compatibility with existing equipment and allows the full benefits of automatic calibration to be realized at a later date as older calibration equipment is replaced by documenting calibrators.



THE INTECAL-W SOFTWARE SYSTEM

Intecal-W provides all the features for efficient calibration management without the complexity of similar software systems. An intuitive user interface and automatic control of a wide range of Druck calibrators means ease of use without compromised features.

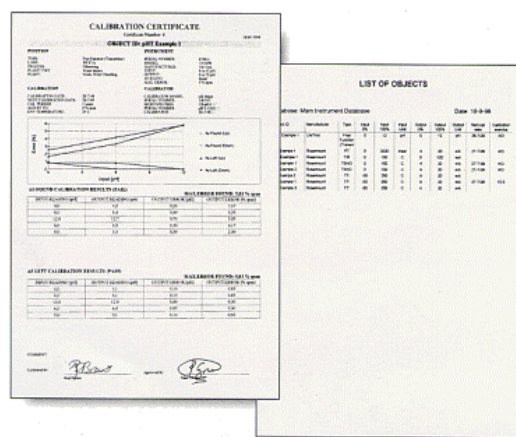
Standard features

- Simple to use, no icons
- Supports Druck calibrators
- Field calibration
- On-Line calibration
- Manual data entry
- Four security levels
- On-line help
- Multiple Access databases
- Database restoration tool
- Supports devices and positions
- User defined instrument types
- Copy and edit functions
- Time base calibration schedules
- User defined queries
- Batch workorders
- Batch document printing
- Calibration history data
- Protected calibration results
- Data export
- PCMCIA card and RS 232
- Multi-lingual

DOCUMENTATION

Print

Intecal-W provides individual or batch printing of documents including object lists, workorders, objects to be calibrated and calibration certificates. The calibration certificates are printed in a clear logical format which complies with the requirements of quality approvals such as ISO 9000. As Left and As Found results are detailed in numerical and graphical form, including the Pass/Fail status and information about the object calibrated, the calibrator used, the technician and the strategy.





Intecal-W Compatible Calibrators

PORTABLE CALIBRATORS



DPI 605 High Precision Pressure Calibrator

- -1 to 20 bar pneumatic pressure source
- Ranges -1 to 700 bar
- 0.025% Rdg accuracy
- RS 232 interface



MCX High Precision Multifunction Calibrator

- T/C's, RTD's, mA, mV/V, ohms, frequency
- Pressure -1 to 350 bar
- Switch testing
- PCMCIA card and RS 232
- Smart HART@communicator



DPI 610 Portable Pressure Calibrator

- -1 to 20 bar pneumatic source
- 0 to 400 bar hydraulic source
- Ranges -1 to 700 bar
- 0.025% FS accuracy
- RS 232 interface



TRX-II Portable Multifunction Calibrator

- T/C's, RTD's, mA, mV/V, ohms, frequency
- Pressure -1 to 700 bar
- Switch testing
- PCMCIA card and RS 232

WORKSHOP CALIBRATORS



DPI 510 Pressure Controller/Calibrator

- Controlled pneumatic source
- Ranges from -1 to 210 bar
- Measure mA, mV/V
- 0.025% Rdg accuracy
- RS 232 interface



DPI 520 Pressure Controller

- Controlled pneumatic source
- Ranges from -1 to 70 bar
- 0.025% Rdg accuracy
- RS 232 interface



DPI 145 Precision Pressure Indicator

- Six channels, ranges -1 to 700 bar
- 0.015% Rdg accuracy absolute
- 0.025% Rdg accuracy gauge
- RS 232 interface



DPI 605R Precision Pressure Calibrator

- Dual channel, ranges -1 to 700 bar
- Measure mA, mV, V and switch state
- 0.025% Rdg accuracy
- RS 232 interface



Deadweight Testers

- 0.05 mbar to 5000 bar
- Gas, water or oil operation
- Accuracies from 0.0015% rdg
- Gauge, absolute or differential pressure

LOW COST HAND HELD TOOLS

DPI 603

Pressure Calibrator, ranges up to 20 bar

DPI 705

Pressure Indicator, ranges up to 700 bar

UPS

Reads and sources mA

MXV

Reads and sources mA, mV, V

VAX-II

Reads and sources mA, mV, V, frequency and pulses

TRX

Reads and sources mA, mV, V, T/C's, RTD's and ohms

INTRINSICALLY SAFE PORTABLE CALIBRATORS

Druck manufacture a wide range of intrinsically safe portable calibrators for field calibration and maintenance of pressure, temperature and electrical instrumentation installed in hazardous areas.

SYSTEM REQUIREMENTS

To run Intecal-W you will require the following:

An IBM compatible PC with a 486 DX2 50 Mhz (Pentium recommended).

Windows 95 or Windows NT 4.0.

16Mb of RAM.

256 colour VGA display adaptor.

15Mb of available hard disk space.

A 3½" floppy disk drive and CD drive.

Serial connection port (RS 232):

A mouse or similar pointing device.

If using the MCX or TRX-II a PCMCIA card slot is recommended.

ORDERING INFORMATION

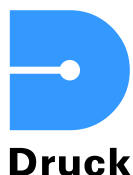
Please state the following:

1) **INTEW** for Intecal-W compatible with all Druck portable and workshop calibrators. A PCMCIA card with software release key is included for use with one MCX or TRX-II. RS 232 cables are supplied for use with the portable calibrators (DPI 605 RS 232 cable supplied with the instrument).
Note: To use with multiple MCX/TRX-II contact Druck.

2) **ICDPI** for Intecal-W as supplied for INTEW but without the PCMCIA card or RS 232 cables for use with the MCX and TRX-II.

Note: To upgrade to INTEW contact Druck.

Continuing development sometimes necessitates specification changes without notice.



Druck Limited

Fir Tree Lane, Groby
Leicester LE6 0FH England
Tel: + 44 (0) 116 231 7100
Fax: + 44(0) 116 231 7103
E-mail: sales@druck.com
Internet: www.druck.com

Agent

SUNSTAR 商斯达实业集团是集研发、生产、工程、销售、代理经销、技术咨询、信息服务等为一体的高科技企业，是专业高科技电子产品生产厂家，是具有 10 多年历史的专业电子元器件供应商，是中国最早和最大的仓储式连锁规模经营大型综合电子零部件代理分销商之一，是一家专业代理和分销世界各大品牌 IC 芯片和电子元器件的连锁经营综合性国际公司，专业经营进口、国产名厂名牌电子元件，型号、种类齐全。在香港、北京、深圳、上海、西安、成都等全国主要电子市场设有直属分公司和产品展示展销窗口门市部专卖店及代理分销商，已在全国范围内建成强大统一的供货和代理分销网络。我们专业代理经销、开发生产电子元器件、集成电路、传感器、微波光电元器件、工控机/DOC/DOM 电子盘、专用电路、单片机开发、MCU/DSP/ARM/FPGA 软件硬件、二极管、三极管、模块等，是您可靠的一站式现货配套供应商、方案提供商、部件功能模块开发配套商。商斯达实业公司拥有庞大的资料库，有数位毕业于著名高校——有中国电子工业摇篮之称的西安电子科技大学（西军电）并长期从事国防尖端科技研究的高级工程师为您精挑细选、量身订做各种高科技电子元器件，并解决各种技术问题。

更多产品请看本公司产品专用销售网站：

商斯达中国传感器科技信息网：<http://www.sensor-ic.com/>

商斯达工控安防网：<http://www.pc-ps.net/>

商斯达电子元器件网：<http://www.sunstare.com/>

商斯达微波光电产品网：[HTTP://www.rfoe.net/](http://www.rfoe.net/)

商斯达消费电子产品网：<http://www.icasic.com/>

商斯达实业科技产品网：<http://www.sunstars.cn/>

传感器销售热线：

地址：深圳市福田区福华路福庆街鸿图大厦 1602 室

电话：0755-83370250 83376489 83376549 83607652 83370251 82500323

传真：0755-83376182 (0) 13902971329 MSN: SUNS8888@hotmail.com

邮编：518033 E-mail:szss20@163.com QQ: 195847376

深圳赛格展销部：深圳华强北路赛格电子市场 2583 号 电话：0755-83665529 25059422

技术支持：0755-83394033 13501568376

欢迎索取免费详细资料、设计指南和光盘；产品凡多，未能尽录，欢迎来电查询。

北京分公司：北京海淀区知春路 132 号中发电子大厦 3097 号

TEL: 010-81159046 82615020 13501189838 FAX: 010-62543996

上海分公司：上海市北京东路 668 号上海赛格电子市场 2B35 号

TEL: 021-28311762 56703037 13701955389 FAX: 021-56703037

西安分公司：西安高新开发区 20 所(中国电子科技集团导航技术研究所)

西安劳动南路 88 号电子商城二楼 D23 号

TEL: 029-81022619 13072977981 FAX:029-88789382