

# DPI 610/615 Series

## Portable Pressure Calibrators

- Ranges 0 to 2.5 mbar through to 700 bar
- Accuracy 0.025% FS all ranges
- Integral combined pressure/vacuum pump
- Dual readout
- 4 to 20 mA loop test facility
- RS 232 interface and fully documenting version
- Intrinsically safe version



# DPI 610/615 Series

## Portable Pressure Calibrators

### SETTING THE STANDARD FOR PORTABLE PRESSURE CALIBRATORS

The technically advanced Druck DPI 610 and DPI 615 portable calibrators are the culmination of many years of field experience with the company's DPI 600 series.

These self-contained, battery powered packages contain a pressure generator, fine pressure control, device energising (not IS version) and output measurement capabilities, as well as facilities for 4 to 20 mA loop testing and data storage. The rugged weatherproof design is styled such that the pressure pump can be operated and test leads connected without compromising the visibility of the large dual parameter display. The mA step and ramp outputs and a built-in continuity tester extend the capabilities to include the commissioning and maintenance of control loops.

Intrinsically Safe versions are available as complete maintenance tools and portable calibration standards for pressure instruments and control loops in hazardous 'Zoned' areas. Certified to BASEEFA and CENELEC standards, the DPI 610IS and DPI 615IS can reduce response times to breakdowns and emergencies by removing the need for 'Hot Permits' and gas detection equipment. This gives peace of mind to all those responsible for safety within hazardous areas.

A highly accurate and easy to use calibrator is only part of the solution for improving overall data quality and working efficiency. The DPI 610 and DPI 615, with data storage and RS 232 interface, reduce calibration times and eliminate data recording errors. The DPI 615 also provides error analysis for field reporting of calibration errors and pass/fail status. In addition, procedures downloaded from a PC automatically configure the DPI 615 to pre-defined calibration and test routines.

### Improved performance

The DPI 610/615 series combine practical design with state of the art performance, summarised as follows:

Accuracy:	0.025% FS for ranges 70mbar to 700mbar
Ranges:	2.5 mbar to 700 bar including gauge, absolute and differential versions
Integral pneumatic pressure source:	-850 mbar to 20 bar
Integral hydraulic pressure source:	0 to 400 bar
Measure:	Pressure, mA, V, switch state (open/closed) and ambient temperature
Output:	Pressure, mA step, mA ramp, mA value
Energising supplies:	10 and 24 Vdc (not IS version)
Data storage:	10,000 values
Documenting (DPI 615 only):	Error analysis with pass/fail status and graphs. Two way PC communication for transferring procedures and results.
Remote pressure sensors:	Up to 10 digitally characterised sensors per calibrator.

### Simplified operation

Druck's knowledge of customer needs, combined with innovative design, results in high performance, multi-functional calibrators which are simple to use. The key to simple operation is the Task Menu. Specific operating modes such as P-I, switch test and leak test are configured at the touch of a button by menu selection.

Featuring highly reliable pneumatic and hydraulic assemblies and self-test routines, the DPI 610/615 series can be relied upon time and time again for field calibration in the most extreme conditions.

Intrinsically Safe Version  
supplied in a yellow case



Set up key to determine default  
working parameters

Automatic zero correction for  
any input or output parameter

Input/output parameter selection keys with dedicated  
task key for instant access to the task menu

Documenting keys to store and recall screen 'snapshots',  
multi-channel data log, calibration procedures and results

Unique integral handle with  
compliant finger grip

Pressure input/output  
test point

Volume adjuster for  
fine pressure control

Combined pressure/vacuum pump  
with -850 mbar to 20 bar capability



Multi-lingual firmware supported by Linkpak-WV  
and Intecal-WV calibration software

RS 232 and remote  
sensor connectors

Input and output  
connectors

Sealed tactile  
elastomeric keypad

Function keys used in  
response to display prompts

Range label for quick  
identification

Release valve allows  
controlled pressure venting

Rotating selector converts the  
pump to pressure or vacuum

Multi-purpose strap for carrying  
or hanging the calibrator





# DPI 610/615 Series

## Applications

### DPI 610/615 PORTABLE PRESSURE CALIBRATORS

The DPI 610 and DPI 615 have been designed for ease of use whilst meeting a wide range of application needs including calibration, maintenance and commissioning. The Intrinsically Safe versions are certified to European and North American standards for use in hazardous areas.

The dual parameter display shows the **INPUT** and **OUTPUT** values in large clear digits. A unique integral handle provides a secure grip for on-site use in addition to a shoulder strap which is also designed to allow the instrument to be suspended for hands-free operation.

Any technician can use these calibrators without formal training, such as a novice on an emergency call out, or those familiar with the DPI 601. By selecting basic mode the calibrator is configured to source pressure and measure mA or V, with all non-essential keys disabled.

#### Dedicated task menu

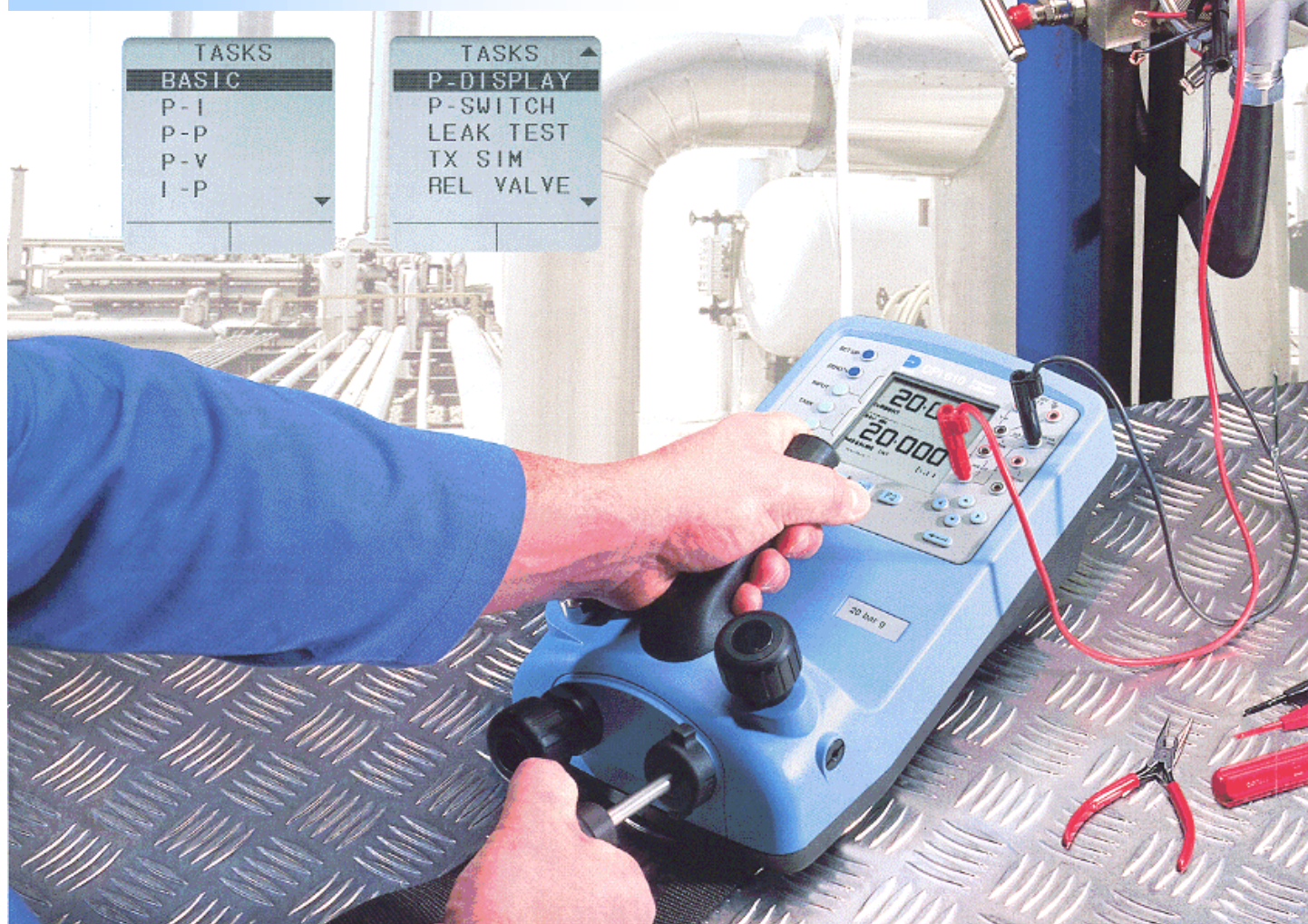
The dedicated **TASK** key gives direct access to the **TASK** menu. Select the required test, for example P-I for a pressure transmitter, and with a single key press, the calibrator is ready.

Use the **ADVANCED** mode for custom tasks and add to the **USER TASK** menu for future use.

#### Some of the capabilities

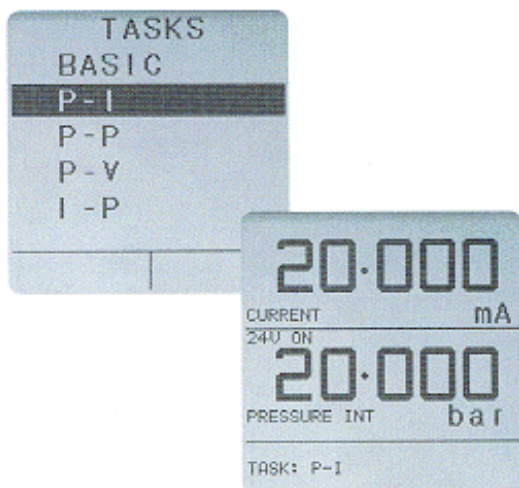
	P	mA	V	10V*	24V*	Switch	°C
Measure	✓	✓	✓	✓	✓	✓	✓
Source	✓	✓	✓	✓	✓	✓	✓

P = Pressure °C = Local ambient temperature \* = Not IS





## PRESSURE TRANSMITTER CALIBRATION



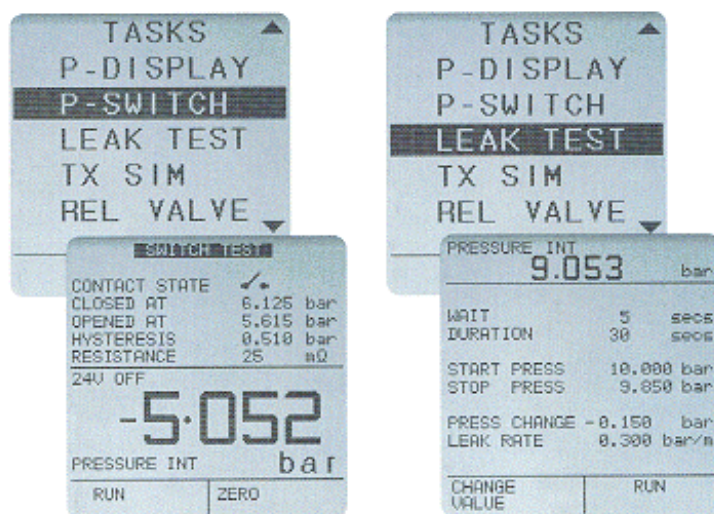
The **P-I** task configures the DPI 610/615 to simultaneously display the **OUTPUT** pressure and the **INPUT** current. The pressure unit can be chosen to suit the transmitter and a 24V supply is available for loop power. (not IS version)

For process transmitters reading in percentage use **%SPAN** to scale the pressure accordingly.

The DPI 610/615 Pneumatic Calibrator hand-pump can generate pressure from -850 mbar to 20 bar. The volume adjuster gives fine pressure setting and the release valve also allows gradual venting for falling calibration points.

Reduce the burden imposed by quality systems such as ISO 9000, simply **STORE** results in memory and leave both pen and calibration sheet back at the office.

## PRESSURE SWITCH TESTING AND LEAK TESTING



For Switch Set-up and Fault Finding, the display shows the output pressure and switch state **OPEN** or **CLOSED**. Continuity is declared by an audible signal.

Verify pressure switch performance using the automatic procedure. The DPI 610/615 displays the switch points and the contact hysteresis.

**LEAK TEST** will check for pressure leaks prior to calibration or during routine maintenance. Define the test times or use the defaults and wait ... The DPI 610/615 will report the **START** and **STOP** pressures, the pressure **CHANGE** and the **LEAK RATE**.

Take a **'SNAPSHOT'** of the working display, all details are stored in a numbered location for later **RECALL**.

## LOOP TESTING AND FAULT FINDING

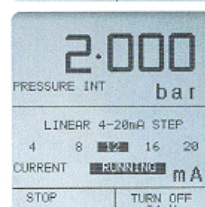
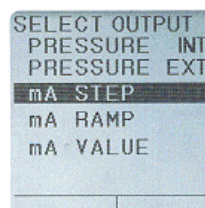
The DPI 610/615 can generate a continuous **mA STEP** or **mA RAMP** output, allowing a single technician to commission control loops.

Feed the loop using **mA STEP** or **mA RAMP** and at the control room, check the instrumentation.

Use **mA VALUE** for alarm and trip circuit tests. Any mA output can be set and adjusted from the keypad.

Comprehensive process features aid flow and level measurement and help with trouble shooting. Select **TARE**, **MAX/MIN**, **FILTER**, **FLOW** or **%SPAN** and the function will be applied to the input parameter.

Save time fault finding, by leaving the DPI 610/615 to monitor system parameters. Use periodic **DATA LOG** or the **MAX/MIN** process function to capture intermittent events.





## REMOTE PRESSURE SENSORS

By adding up to 10 external sensors (one at a time) the working ranges of the DPI 610 and DPI 615 can be extended. With modules from 2.5 mbar to 700 bar sensors are available to suit most applications.

As a leading manufacturer of pressure sensors Druck has applied the latest silicon technology and digital compensation techniques to develop these sensors.

Remote sensors offer a costs-effective means of expanding the capabilities of the DPI 610 and DPI 615, for example in the following applications:

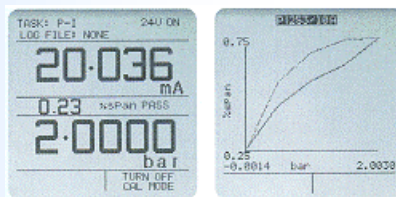
- Low Pressure
- Pressure to pressure
- Differential pressure
- Wide range, high accuracy
- Test point monitoring
- To prevent cross contamination
- To configure pneumatic calibrators for high pressure hydraulic systems
- To configure hydraulic calibrators for low pressure pneumatic systems

## DPI 615 PORTABLE DOCUMENTING PRESSURE CALIBRATOR

The DPI 615 adds powerful time saving and error eliminating features to the comprehensive functionality of the DPI 610. These include field error calculations with PASS/FAIL analysis and two way PC communications for downloading procedures and uploading results.

### Reporting errors in the field

The DPI 615 calculates errors and reports the PASS/FAIL status during field tests. Problems and failures can be analysed graphically for immediate assessment and correction. This simple to use feature reduces calibration and maintenance times and eliminates human errors.



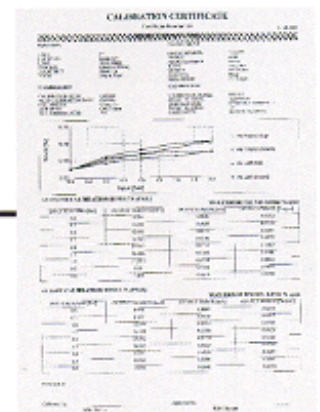
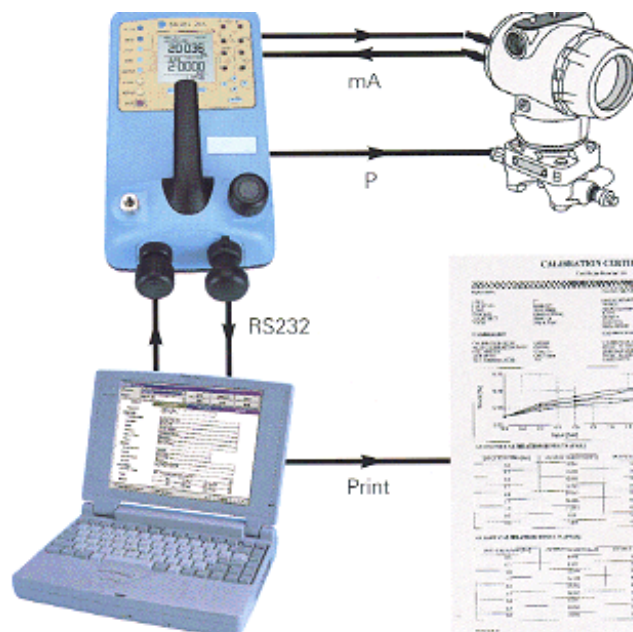
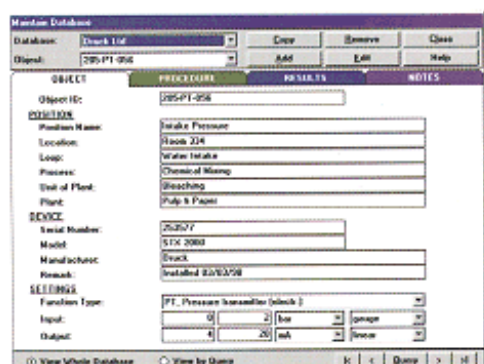
### Completing the paper trail

It takes longer to fill out a calibration report, calculate the errors and assess the results than it does to calibrate the transmitter. With the DPI 615, documents can be quickly completed either on site or, at a more convenient time and location, by recalling the information from the DPI 615's memory.

### Calibration management systems

When used in conjunction with calibration management software the DPI 615 greatly reduces the financial and resource burden imposed by quality systems such as ISO 9000. As work orders are issued, object lists and procedures are downloaded to the DPI 615. In the field these procedures configure the instrument for the tests. The errors and PASS/FAIL status are reported and recorded in memory (as found or as left results) for later upload to the software. Calibration certificates can then be printed and plant maintenance systems updated. The whole documenting process is completed in a fraction of the time it takes using manual systems and without human error.

For more information on calibration software please refer to the Linkpak-W and Intecal-W data sheets or visit [www.druck.com](http://www.druck.com) for free demonstration software. The DPI 615 is also compatible with many third party software systems.





# DPI 610/615 Series

## Standard Specification



### PNEUMATIC CALIBRATOR DPI 610/615PC

**Hand-pump**  
-850 mbar to 20 bar capability

**Volume adjuster**  
Fine pressure adjustment

**Release valve**  
Vent and controlled release

**Pressure port**  
G $\frac{1}{8}$  (female)

**Media**  
Most common gases



### HYDRAULIC CALIBRATOR DPI 610/615HC

**Priming pump**  
M5 (female) feed port

**Shut-off valve**  
Open for system priming

**Screw press**  
0 to 400 bar capability

**Pressure port**  
G $\frac{1}{8}$  (female)

**Media**  
Demineralised water and most hydraulic oils



### INDICATOR DPI 610/615I

**Release valve**  
Vent and controlled release

**Pressure port**  
G $\frac{1}{8}$  (female)

**Media**  
Most common fluids compatible with stainless steel

### ELECTRICAL INPUTS

Input	Range	Accuracy	Resolution	Remarks
Voltage*	$\pm 50$ V d.c. ( $\pm 30$ V d.c. IS version)	$\pm 0.05\%$ Rdg. $\pm 0.004\%$ F.S.	100mV max	Autoranging, >10MW
Current*	$\pm 5$ mA	$\pm 0.05\%$ Rdg. $\pm 0.004\%$ F.S.	0.001mA	10V, 50V max. (30V max IS version) Local ambient 5mA whetting (1mA IS version)
Temperature Switch	-10° to 40°C	$\pm 1^\circ\text{C}$	1°C	

\* Temperature coefficient  $\pm 0.0075\%$  reading/ $^\circ\text{C}$  w.r.t. 20°C

For IS version  $U_i = 30$ V max  $I_i = 100$ mA  $P_i = 1$ W max

### ELECTRICAL INPUTS

Output	Range	Accuracy	Resolution	Remarks
Voltage (not IS version)	10V d.c. 24V d.c.	$\pm 0.1\%$ $\pm 5\%$		Max. load 10mA Max. load 26mA
Current*	0 to 20mA	$\pm 0.05\%$ Rdg. $\pm 0.01\%$ F.S.	0.001mA	

\* Temperature coefficient  $\pm 0.0075\%$  reading/ $^\circ\text{C}$  w.r.t. 20°C.

For IS version  $U_i = 30$ V max  $I_i = 100$ mA  $P_i = 1$ W max  $U_o = 7.9$ V max

### SPECIAL FEATURES

#### Pressure units

25 scale units plus one user defined.

#### mA step

Continuous cycle at 10 sec intervals.

Function	MA Output							
4 to 20mA linear	4	8	12	16	20			
0 to 20mA linear	0	5	10	15	20			
4 to 20mA flow	4	5	8	13	20			
0 to 20mA flow	0	1.25	5	11.25	20			
4 to 20mA valve	3.8	4	4.2	12	19	20	12	

#### mA ramp

Continuous cycle with configurable end values and 60 sec travel time.

#### Data log

Multi-parameter with internal memory for 10,000 values. Variable sample period for data logging or log on key press for calibration results.

#### Snapshot

Paperless notepad. Stores up to 20 complete displays.

#### RS232 Computer interface (IS version - safe area use only)

DPI 610 Unidirectional for uploading results to a PC.

DPI 615 Bidirectional for downloading procedures and uploading results.

#### Process functions

Tare, max/min, filter, flow, % span.

#### Language

English, French, German, Italian, Portuguese and Spanish.

#### Power management

Auto power OFF, auto backlight OFF, battery low indicator and status on key press.

### DISPLAY

#### Panel

60 x 60 mm graphic LCD with backlight. (backlight not available on IS version)

#### Readout

$\pm 99999$  capability, 2 readings per second.

### ENVIRONMENTAL

#### Temperature

Operating: -10° to 50°C

Calibrated: -10° to 40°C

#### Humidity

0 to 90%, non-condensing.

#### Sealing

IP54.

#### Conformity

EN61010, EN50081-1, EN50082-1, CE marked.

Intrinsically Safe version: supplied certified for use in hazardous areas

EEx ia IIC T4 certificate Ex99E2002X

To EN50020: 1994 and EN50014: 1992

Ex ia IIC T4 certificate pending

To CAN/CSA - E79-11-95 and CAN/CSA E79 - 0 - 95

(Division 1, class 1, groups A, B, C and D)

#### Physical

3 kg, 300 x 170 x 140 mm.

#### Power supply

6 x 1.5 V C cells, alkaline (upto 65 hrs nominal use at 20°C for the standard version and 30 hrs for the IS version). For rechargeable batteries see Option A (20 hrs nominal use).

### PRESSURE RANGES

The DPI 610/615 PC, HC and I include an integral sensor, the range of which should be specified from the list below. Up to 10 remote sensors (option B1) may also be ordered per calibrator.

Pressure Range	Pneumatic DPI 610PC/ DPI 615PC	Hydraulic DPI 610HC/ DPI 615HC	Indicator DPI 610I/ DPI 615I	Remote Option (B1)	Accuracy % F.S.
2.5mbar (-2.5)				VLD	*
10mbar (-10)				LD	*
25mbar (-25)				LD	*
50mbar (-50)				LD	*
70mbar (-70)				G or D	0.025
100mbar (-100)				LD	*
70mbar (-70)	G		G	G or D	0.025
200mbar (-200)	G		G	G or D	0.025
350mbar (-350)	G or A		G or A	G, A or D	0.025
700mbar (-700)	G or A		G or A	G, A or D	0.025
1 bar (-1)	G or A		G or A	G, A or D	0.025
2 bar (-1)	G or A		G or A	G, A or D	0.025
3.5 bar (-1)	G or A		G or A	G, A or D	0.025
7 bar (-1)	G or A		G or A	G, A or D	0.025
10 bar (-1)	G or A		G or A	G, A or D	0.025
20 bar (-1)	G or A		G or A	G, A or D	0.025
35 bar (-1)	G or A		G or A	G, A or D	0.025
70 bar (-1)		G or A	G or A	G or A	0.025
135 bar		SG or A	SG or A	SG or A	0.025
160 bar		SG or A			0.025
200 bar			SG or A	SG or A	0.025
350 bar			SG or A	SG or A	0.025
400 bar		SG or A			0.025
700 bar				SG or A	0.025

Values in ( ) = negative calibration for G and D ranges.

A = absolute. D, LD and VLD = differential. G = Gauge. SG = sealed gauge.

For ①, ② and ③ please refer to overpressure.

Accuracy is defined as non-linearity, hysteresis and repeatability. (\*=refer to Druck)

**Temperature Effects (averaged and w.r.t. 20°C):**  $\pm 0.004\%$ rdg/ $^\circ\text{C}$ .

**Line pressure:** D=35 bar

**Line pressure span shift:** D=0.5%/35 bar

**Remote sensor media compatibility:** A, G, D (positive port) and SG stainless steel and hastelloy. D (negative port) stainless steel and silicon.

**Overpressure:** Safe to 2 x F.S except ① 35 bar, ② 600 bar and ③ 350 bar maximum (refer to table).

# DPI 610/615 Series

## Options and related products



### OPTIONS

#### (A) Rechargeable batteries and charger (not available for IS version)

A rechargeable Ni-cad battery pack to replace the standard dry cells. Supplied with a universal input charger/battery eliminator which allows the instrument to be used whilst charging.

#### (B1) Remote pressure sensor

The calibrators have a second pressure channel which can be configured with up to 10 remote sensors (one at a time). For ease of use the sensors are fitted with an integral electrical connector and G1/4 (female) pressure ports.

Please refer to specifications for ranges and associated accuracy. A mating cable is required - see Option (B2).

#### (B2) Mating cable for remote sensors

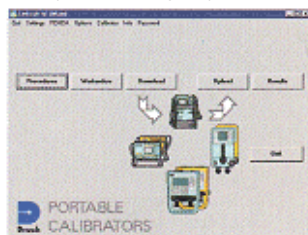
A 2 metre mating cable for connecting remote sensors to the calibrator. At least one cable should be ordered when ordering Option (B1).

#### (C) 1/8 NPT (female) adaptor

A stainless steel adaptor and bonded seal to convert the standard G1/8 (female) pressure port to 1/8 NPT (female).

#### (D1) Linkpak-W calibration software (P/N LPDPI)

Developed to help meet the growing demand on industry to comply with quality systems and calibration documentation. Test procedures are created in a Windows based application and devices due for calibration are reported and grouped into work orders for transfer to the DPI 605, DPI 615, TRX-II or the MCX. Calibration results, including files from the DPI 610, are uploaded to the PC for analysis and to print calibration certificates. Visit [www.druck.com](http://www.druck.com) for Linkpak-W demonstration



#### (D2) Intecal-W calibration database software (P/N ICDPI)

Intecal-W Windows based software builds on the basic concept of Linkpak-W supporting both portable field calibrators and on-line workshop calibrators. Manual data entry is also a key feature for recording data. Intecal-W is an easy to learn and easy to use calibration management software for process plants, workshops, contractors, manufacturers and service companies. It offers high productivity of calibration scheduling, calibration work and documentation. Device information, calibration procedures and calibration results are stored in an instrument database and multiple databases can be created for organising client accounts, processes or areas. Extensive management features are provided including a database search engine, time based calibration due queries and standard reports. Visit [www.druck.com](http://www.druck.com) for an Intecal-W demonstration



### ACCESSORIES

The DPI 610/615 is supplied with carrying case, test leads, user guide and calibration certificate as standard. The DPI 610/615HC also has a 250 ml polypropylene fluid container and priming tube.

### CALIBRATION STANDARDS

Instruments manufactured by Druck Limited are calibrated against precision calibration equipment traceable to international standards.

### RELATED PRODUCTS

#### Portable field calibrators

Druck manufacture a wide range of portable pressure, temperature and electrical field calibrators. A selection of these are shown below.



#### Laboratory and workshop instruments

Druck also manufacture a comprehensive range of pressure indicators and controllers. Included in this range are the Pressurements industrial deadweight testers and the Ruska high precision controllers and primary standard piston gauges.

#### Pressure transducers and transmitters

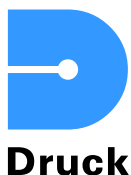
The DPI 610 is the ideal calibration and maintenance tool for Druck transducers and transmitters, including the RTX and Smart/HART® STX process pressure transmitters. Please refer to manufacturer for further information on related products.

### ORDERING INFORMATION

Please state the following (where applicable):-

1. Full DPI 610 or DPI 615 type number e.g. DPI 610PC.  
For IS version use the suffix 'S' after the basic model number eg DPI 610S PC
2. Integral pressure range gauge or absolute.
3. Options, including range for remote sensors.  
Note option (B1) and (D) should be ordered as separate line items.
4. Preferred language of user guide. (Refer to specifications for availability)

**Continuing development sometimes necessitates specification changes without notice.**



**Druck Limited**  
Fir Tree Lane, Groby  
Leicester LE6 0FH England  
Tel: + 44 (0) 116 231 7100  
Fax: + 44(0) 116 231 7103  
E-mail: [sales@druck.com](mailto:sales@druck.com)  
Internet: [www.druck.com](http://www.druck.com)

Agent



**SUNSTAR 商斯达实业集团**是集研发、生产、工程、销售、代理经销、技术咨询、信息服务等为一体的高科技企业，是专业高科技电子产品生产厂家，是具有 10 多年历史的专业电子元器件供应商，是中国最早和最大的仓储式连锁规模经营大型综合电子零部件代理分销商之一，是一家专业代理和分销世界各大品牌 IC 芯片和电子元器件的连锁经营综合性国际公司，专业经营进口、国产名厂名牌电子元件，型号、种类齐全。在香港、北京、深圳、上海、西安、成都等全国主要电子市场设有直属分公司和产品展示展销窗口门市部专卖店及代理分销商，已在全国范围内建成强大统一的供货和代理分销网络。我们专业代理经销、开发生产电子元器件、集成电路、传感器、微波光电元器件、工控机/DOC/DOM 电子盘、专用电路、单片机开发、MCU/DSP/ARM/FPGA 软件硬件、二极管、三极管、模块等，是您可靠的一站式现货配套供应商、方案提供商、部件功能模块开发配套商。商斯达实业公司拥有庞大的资料库，有数位毕业于著名高校——有中国电子工业摇篮之称的西安电子科技大学（西军电）并长期从事国防尖端科技研究的高级工程师为您精挑细选、量身订做各种高科技电子元器件，并解决各种技术问题。

更多产品请看本公司产品专用销售网站：

商斯达中国传感器科技信息网：<http://www.sensor-ic.com/>

商斯达工控安防网：<http://www.pc-ps.net/>

商斯达电子元器件网：<http://www.sunstare.com/>

商斯达微波光电产品网：[HTTP://www.rfoe.net/](http://www.rfoe.net/)

商斯达消费电子产品网：<http://www.icasic.com/>

商斯达实业科技产品网：<http://www.sunstars.cn/>

传感器销售热线：

地址：深圳市福田区福华路福庆街鸿图大厦 1602 室

电话：0755-83370250 83376489 83376549 83607652 83370251 82500323

传真：0755-83376182 (0) 13902971329 MSN: [SUNS8888@hotmail.com](mailto:SUNS8888@hotmail.com)

邮编：518033 E-mail:[szss20@163.com](mailto:szss20@163.com) QQ: 195847376

深圳赛格展销部：深圳华强北路赛格电子市场 2583 号 电话：0755-83665529 25059422

技术支持：0755-83394033 13501568376

欢迎索取免费详细资料、设计指南和光盘；产品凡多，未能尽录，欢迎来电查询。

北京分公司：北京海淀区知春路 132 号中发电子大厦 3097 号

TEL: 010-81159046 82615020 13501189838 FAX: 010-62543996

上海分公司：上海市北京东路 668 号上海赛格电子市场 2B35 号

TEL: 021-28311762 56703037 13701955389 FAX: 021-56703037

西安分公司：西安高新开发区 20 所(中国电子科技集团导航技术研究所)

西安劳动南路 88 号电子商城二楼 D23 号

TEL: 029-81022619 13072977981 FAX:029-88789382