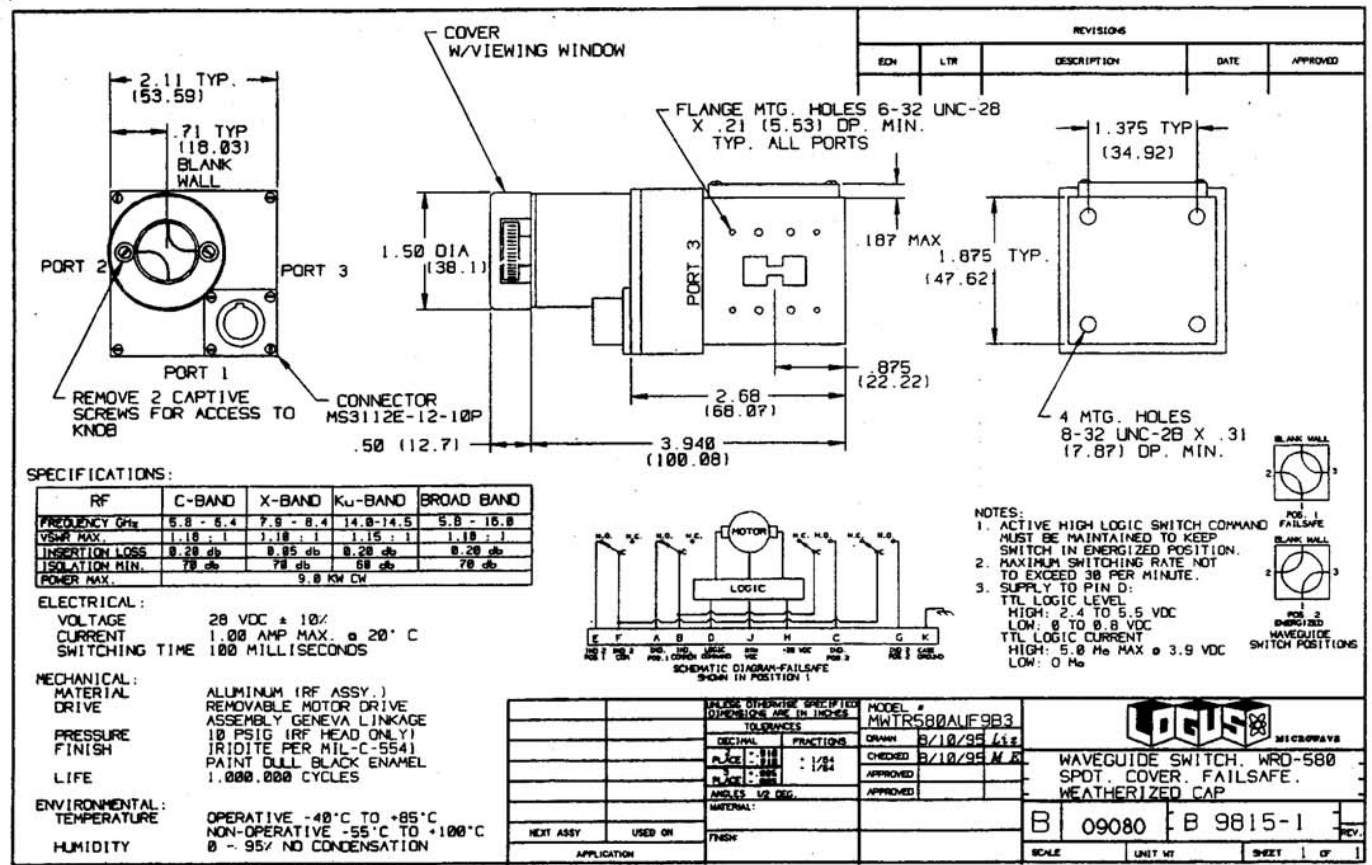
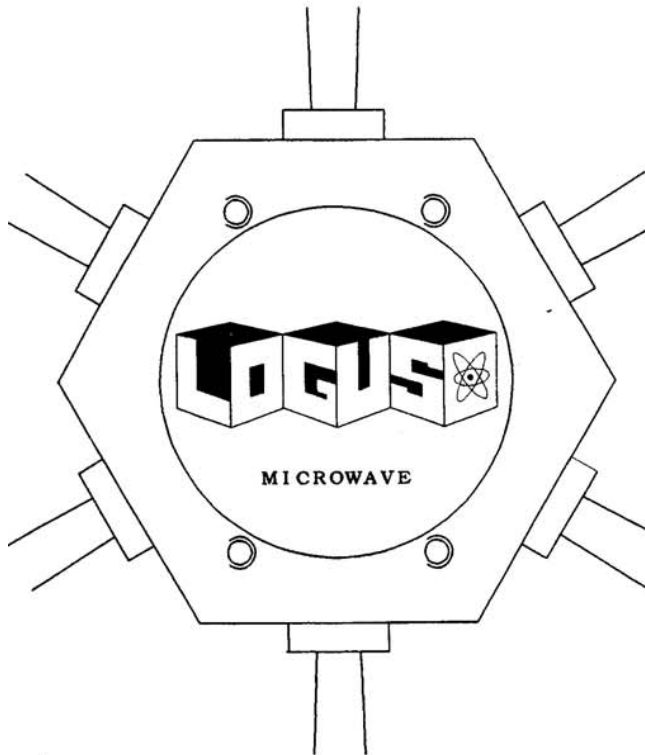


1 WR58MB11X1



3 MWTR580A1F0R3

WIDE-BAND TO TRI-BAND FILTER SWITCH



INPUT : WRD580 5.85 - 16.0 GHz Unfiltered

OUTPUTS : WR75 14.0 - 14.5 GHz Filtered
 WR112 7.9 - 8.4 GHz Filtered
 WR137 5.8 - 6.4 GHz Filtered

SWITCH-OVER TIME : 150 ms (max).

New product accepts wide-band WRD580 input and provides complete electro-mechanical switchover to one of three standard rectangular outputs.

This complete solution includes the switch, transitions, HP Load harmonic filtering, receive reject filtering and circulator protection in one compact Rack mounted package.

OPTIONS INCLUDE :

- Dual Configuration - 2 Inputs to 6 Outputs
- TTL SwitchControl - Remote operation via TTL Driver
- Custom Frequency - User specified Freq. & Waveguide sizes upon request
- Combiner Modules - Used with Logus Combiners can give Expanded configuration control and phase power combining capabilities.

Call, Fax, or Write for Details !!!!!



1305 HILL AVE.
 W. PALM BEACH, FL 33407

PH. 407-842-3550
 FAX 407-842-2196

