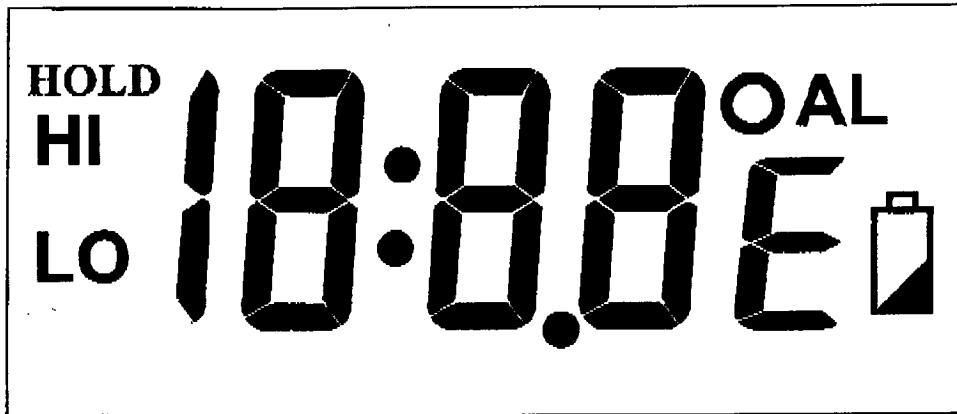


SS0911-3

Wide Range Thermometer
-50°C to +150°C (-58°F to +302°F)



Segment Test

/Temperature

C/F switch



°C °F

Mode



Temperature Mode
Segment Testing

1/10s sampling



1s 10s

Sample and

Hold Switch



Temperature Mode
Sample Hold

On/Off switch



Onn
Off

Lo Alarm ○

Hi Alarm ○

Mode/Hold/Alarm ○

Back light ○

°C↔°F ○

Power On-Off ○

FEATURES

- 1.5V battery operation with very low power consumption
- High and Low temperature alarms
- Selectable 1 second and 10 seconds temperature sensing rate
- Temperature data hold function
- Measurement ranging from -50°C to $+150^{\circ}\text{C}$ (-58°F to $+302^{\circ}\text{F}$)
- Segment test function
- 10 minutes auto-power off function by bonding option
- Back light

DESCRIPTIONS

The SS0911-3 is a low power consumption CMOS IC to measure wide temperature range. By using a specific made thermistor SE239 as sensor, SS0911-3 can measure temperature ranging from -50°C to $+150^{\circ}\text{C}$ (-58°F to $+302^{\circ}\text{F}$). The temperature is displayed on a $3\frac{1}{2}$ -digit liquid crystal display (LCD). Besides, the SS0911-3 is embedded with high and low temperature alarm function for monitoring the measured temperature. Data hold function is also available. Segment test function is included in SS0911-3 for production testing.

The application for SS0911-3 is cooking thermometer, laboratory thermometer and any other applications where wide range, digital temperature measurement is required.

MODE DESCRIPTIONS

a. Keys and Switches definitions

Bonding Options	Descriptions
Auto Power Off	Available = CLOSE Unavailable = OPEN

Slide Switches	Descriptions
C/F switch	°C or °F switching terminal
Segment Test /Temperature Mode	All segment testing or Temperature Mode
1/10s Sampling	1 second sampling = CLOSE 10 seconds sampling = OPEN
Sample and Hold switch	Sample and Hold Function (Sample = OPEN and Hold = CLOSE)
On/Off switch	On or Off switching terminal(On =CLOSE and Off = OPEN)

Keys	Descriptions
Low Alarm	Low temperature alarm
High Alarm	High temperature alarm
Mode/Hold/Alarm	Temperature / Sample and Hold / Alarm on-off
Back light	Back light
°C↔°F	°C or °F push button
Power On-Off	Power on/off

Power On and Off Both of the **On/Off switch** and **Power On/Off key** are used to switch on and off the device. The **On/Off switch** should be closed to allow the user to use **Power On/Off key** to operate the device and .

Sample and Hold Sample and hold function is activated by pushing the **Mode/Hold/Alarm Key** or sliding the **Sample and Hold switch**. After the **Sample and Hold Switch** is closed, the device will change to Hold mode. No other modes can be used after in this state, except the **Segment Test Mode** and **Power On/Off**. The **Mode/Hold/Alarm Key** can also be used to switch the sample, alarm and hold mode. The

	sample mode is the mode for sampling the temperature. The hold mode is used to hold the temperature reading. The LCD will display the icon to indicate this mode. The alarm mode is used to set the low temperature and high temperature with low alarm key and high alarm key respectively.
All segment tests	All segments on LCD are turned on, when Segment Test /Temperature Mode switch is slid to All Segment Test Mode.
Alarm on – off	Holding the Low Alarm key or High Alarm Key and pressing Mode/Hold/Alarm to turn on/off the High or Low Temperature Alarm. When user enters the Temperature Alarm Mode, the alarm will enable automatically.
High Temperature Alarm	Holding High Alarm for 3 seconds, High Temperature Alarm value will increase at 8Hz rate until the button is released. The default High Temperature Alarm value is +150°C (+302°F)
Low Temperature Alarm	Holding the Low Alarm for 3 seconds, Low Temperature Alarm value will increase at 8Hz rate until the button is released. The default Low Temperature Alarm value is – 50°C (-58°F)
Back light	The back light emits for 5 seconds when Back Light is pressed.

b. Temperature Mode (**Segment Test /Temperature Mode = Open**)

Press **Low Alarm** or **High Alarm** to enter Low Temperature Alarm Mode or High Temperature Alarm Mode respectively. At this time, low Alarm or high Alarm is activated automatically.

Press **Mode/Hold/Alarm** to enter to Sample and Hold Mode. At this time, °C or °F's segments will flashing. To return to the Temperature Mode, simply press **Mode/Hold/Alarm** once again.

Press **Back Light** to turn on back light and last for 5 seconds.

Press **Power On-Off** to enter sleep mode. Press any keys to wake it up.

c. Low Temperature Alarm Mode

Press and hold **Low Alarm** for 3 seconds to enter to Low Temperature Alarm Setting Mode. In this mode, press **Low Alarm** to increase the alarm setting value. The setting

value will increase at 8Hz rate when **Low Alarm** is held for 1-2 seconds. Press **Mode/Hold/Alarm** to exit Temperature Alarm Setting Mode.

Enable or disable of low temperature alarm are toggled by holding **Low Alarm** and pushing **Mode/Hold/Alarm**.

Press **High Alarm** to enter to High Temperature Alarm Mode

Press **Back Light** to turn on light and it last for 5 seconds.

Press **Mode/Hold/Alarm** to return to Temperature Mode

Press **Power On-Off** to enter Sleep Mode. Press any key to wake it up.

d. High Temperature Alarm Mode

Press and hold **High Alarm** for 3 seconds to enter to High Temperature Alarm Setting Mode. In this mode, press **High Alarm** to increase the setting value. The setting value can be increased at 8Hz rate when **High Alarm** is held for 1-2 seconds. Press **Mode/Hold/Alarm** to exit Temperature Alarm Setting Mode.

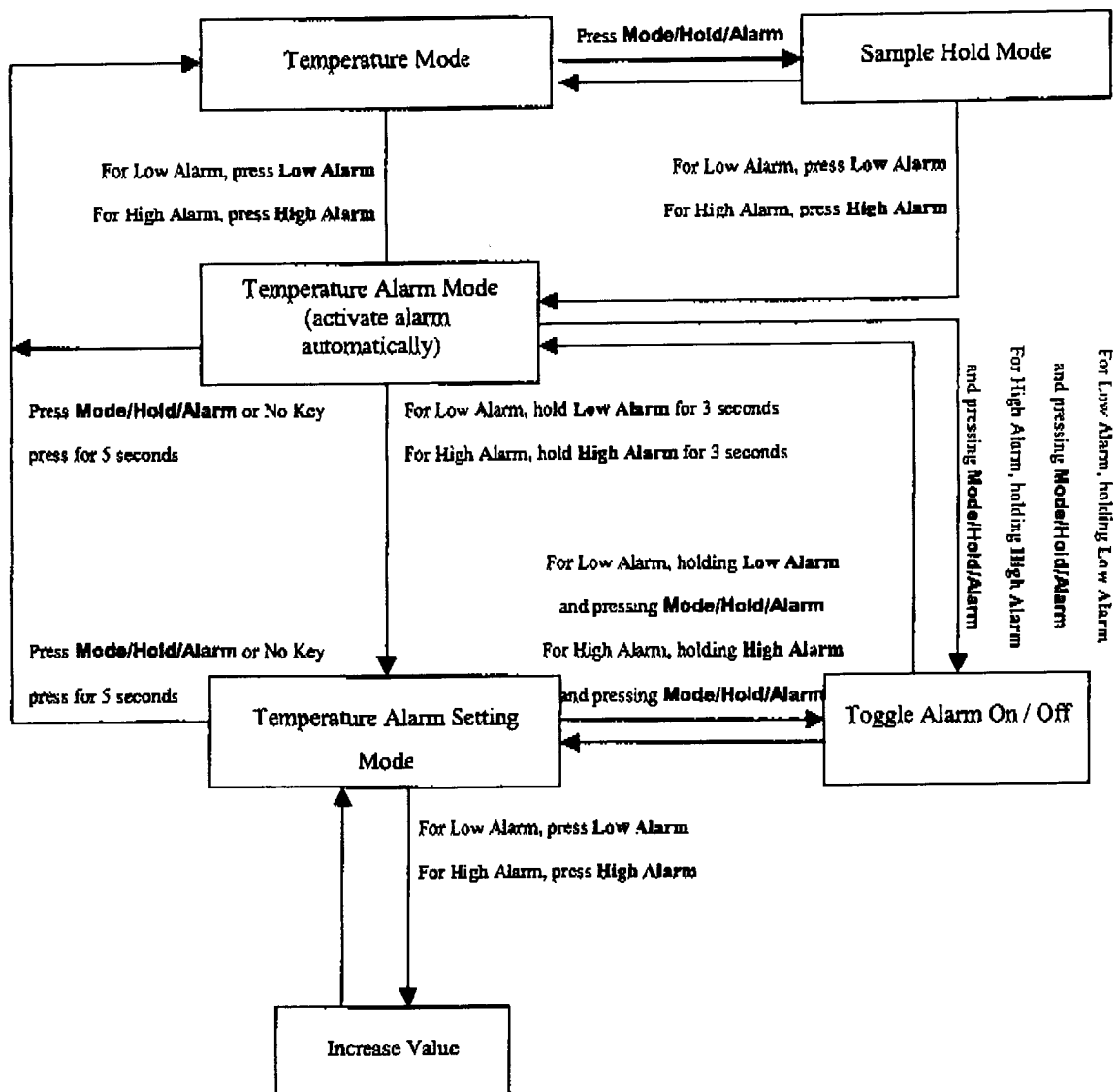
Enable or disable of high temperature alarm are toggled by holding **High Alarm** and pushing **Mode/Hold/Alarm**.

Press **Low Alarm** to enter to Low Temperature Alarm Mode

Press **Back Light** to turn on the back light and it last for 5 seconds.

Press **Mode/Hold/Alarm** to return to Temperature Mode

Press **Power On-Off** to enter to Sleep Mode. Press any key to wake it up.



e. °C / °F interchange

In this IC, we have 2 methods to interchange °C and °F:

- i) **C/F switch** as a bonding option to set default unit (open is °C, close is °F). At this time, use °C↔°F to interchange the °C and °F in each mode.
- ii) **C/F switch** as a C/F interchange slide switch.

The **C/F switch** & °C↔°F key is mutually exclusive. (i.e. they cannot use at the same time.)

1 Second or 10 Seconds Sampling

Sample rate can be chosen by bonding option:

For 10 seconds temperature sampling period, **1/10s Sampling** =Open.

For 1 second temperature sampling period, **1/10s Sampling** =Close.

ALARM OPERATIONS

When Temperature exceeds the high temperature alarm value (HIGH) or temperature drops below the low temperature value (LOW), the temperature alarm will be activated and beep tones will be heard at 5 times per minutes. These beep tones repeat until any key is pressed.

ALARM SIGNAL PINS


6 signal pins are available to trigger external peripheral. The triggering conditions are shown as below:

Output 6 – it will be changed to VDD when temperature drops below low temperature alarm value. If temperature rises over the low temperature alarm value, it will be changed to GND.

Output 5 – it will be changed to VDD when temperature exceeds high temperature alarm value. If temperature drops below the high temperature alarm value, it will be changed to GND.

- Output 4 – it will be changed to VDD when temperature exceeds high temperature alarm value or drops below low temperature alarm value. It keeps at VDD unless the measured temperature is fall within the low and high temperature alarm values.
- Output 3 – it will be changed to VDD when temperature drops below low temperature alarm value. Once the pin changed to VDD, it will not be changed to GND unless resetting the IC.
- Output 2 – it will be changed to VDD when temperature exceeds high temperature alarm value. Once the pin changed to VDD, it will not be changed to GND unless resetting the IC.
- Output 1 – it will be changed to VDD when temperature exceeds high temperature alarm value or drops below low temperature alarm value. Once the pin changed to VDD, it will not be changed to GND unless resetting the IC.

LOW BATTERY DETECTOR

Low battery detector is provided to indicate low battery voltage. When the battery voltage is low, LCD will show a "  " icon. Adjust R5 & R6 to in the application circuit define the low battery thershold voltage.

AUTO POWER OFF

When auto power off function is selected by bonding options, 10 minutes auto-power off is activated. The IC will be turned off if no key is pressed within 10 minutes. When any key is pressed, the IC will be turned on immediately.

ABSOLUTE RATINGS

at Ta = 25°C, VDD = 1.5V

Parameters	Symbol	Min	Max	Unit
Maximum Supply Voltage	V _{DD}	-0.3	+5.5	V
Maximum Input Voltage	V _{in}	-0.3	VDD+0.3	V
Maximum Output Voltage	V _{out}	-0.3	VDD+0.3	V
Maximum Operating Temperature	T _{opg}	0	70	°C
Maximum Storage Temperature	T _{stg}	-25	125	°C

DC ELECTRICAL CHARACTERISTICS

at Ta = 25°C, VDD = 1.5V

Parameters	Symbol	Min	Typ.	Max	Unit
Operating Voltage	VDD	1.2	1.5	1.8	V
Operating Current	I _d		Depends on measuring temperature		μA
Standby Current	I _{st}		3		μA
LCD Supply Voltage	V _{lcd}		3		V
LCD Frame Frequency	F _{lcd}		32		Hz
Operating Frequency	F _{opg}		32.768		KHz

Accuracy and Resolution

Parameters	
Measurement Resolution	0.1° for -19.9 to +199.9°, 1.0° otherwise
Measurement Accuracy	± 1.0°C (-10°C to 100°C) , ±2.0°C otherwise

欢迎索取免费详细资料、设计选型指南和光盘、样品；产品繁多未能尽录，欢迎来电查询。

[中国传感器科技信息网：HTTP://WWW.SENSOR-IC.COM/](http://WWW.SENSOR-IC.COM/)

[工控安防网：HTTP://WWW.PC-PS.NET/](http://WWW.PC-PS.NET/)

[消费电子专用电路网：HTTP://WWW.SUNSTARE.COM/](http://WWW.SUNSTARE.COM/)

E-MAIL：xjr5@163.com szss20@163.com

MSN：suns8888@hotmail.com

QQ：195847376

地址：深圳市福田区福华路福庆街鸿图大厦 1602 室

电话：0755-83376549 83376489 83387030 83387016

传真：0755-83376182 83338339 邮编：518033 手机：(0)13902971329

深圳展销部：深圳华强北路赛格电子市场 2583 号 TEL/FAX：
0755-83665529 25059422

北京分公司：北京海淀区知春路 132 号中发电子大厦 3097 号

TEL：010-81159046 82615020 13501189838 FAX：010-82613476

上海分公司：上海市北京东路 668 号上海赛格电子市场 2B35 号

TEL：021-28311762 56703037 13701955389 FAX：021-56703037

西安分公司：西安高新开发区 20 所(中国电子科技集团导航技术研究所)
西安劳动南路 88 号电子商城二楼 D23 号

TEL：029-81022619 13072977981 FAX:029-88789382

成都：TEL:(0)13717066236

技术支持：0755-83394033 13501568376