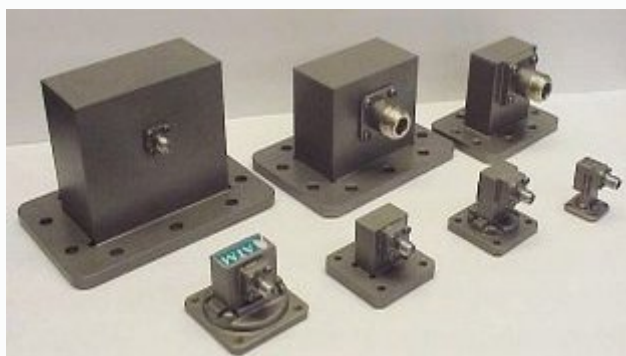


Waveguide to Coax, Right Angle Adapters,

See Also: [Adapters, W/G to Coax, Endlaunch](#) [Adapters, W/G to W/G](#)

ATM manufactures Waveguide to Coax Adapters covering a full frequency range for Rectangular Waveguides and Double Ridge Waveguides, with multiple flange and Coaxial connector types and configurations available. For more information feel free to call us and discuss your needs with one of our design engineers.



- Full Waveguide Frequency Range
- Multiple Flange Types available
- Other connectors such as SMA (M), Type N (M), SC, TNC, and 7/16 available. Consult factory for details.

GENERAL SPECIFICATIONS - RECTANGULAR W/G TO COAX ADAPTERS

Electrical

VSWR: 1.25 Max

RF Connectors: K-Type, SMA, Type-N, SC, TNC, and 7/16" available

Mechanical

Body: Aluminum/Copper-Brass (per order)

Flanges: Multiple types available - see [ATM Std. Flanges](#)

Connectors: Stainless Steel

Operation Temp:

Finish: Unique corrosion resistant 316 stainless steel epoxy coating IAW MIL-F-14072

Applicable Mil-Specs

General:

Product Specific:

Sma W/G - Coax Adapters

WG Size	Freq (GHz)	Model No.*	Power CW (Watts)	Peak Power (kW)	Outline Drawing
WR650	1.12 - 1.70	650-251A-2	50	3	Dwg
WR430	1.70 - 2.60	430-251A-2	50	3	Dwg
WR340	2.20 - 3.30	340-251A-2	50	3	Dwg
WR284	2.60 - 3.95	284-251A-6	50	3	Dwg
WR229	3.30 - 4.90	229-251B-2	50	3	Dwg
WR187	3.95 - 5.85	187-251A-6	50	3	Dwg
WR159	4.90 - 7.05	159-251B-2	50	3	Dwg
WR137	5.85 - 8.20	137-251B-2	50	3	Dwg
WR112	7.05 - 10.0	112-251B-6	50	3	Dwg
WR102	7.00 - 11.0	102-251A-6	50	3	Dwg
WR90	8.20 - 12.4	90-251A-6	50	3	Dwg
WR75	10.0 - 15.0	75-251A-6	50	3	Dwg
WR62	12.4 - 18.0	62-251A-6	50	3	Dwg
WR51	15.0 - 22.0	51-251B-6	50	3	Dwg
WR42	18.0 - 26.5	42-251A-6	50	3	Dwg
WR34	22.0 - 33.0	34-25KB-6**	10	3	Dwg
WR28	26.5 - 40.0	28-25KA-6**	10	3	Dwg

Ordering Information

W/G - Coax Adapter, SMA

Example part number: **WR** 90 -251 **M** A -6

Waveguide Size: (WR) WR28 thru WR650

Basic Model No.: (-Mod)

Material (M): A=Aluminum, B=Copper/Brass

Flange (-F): 1=CPRG, 2=CPRF, 6=Cover, 7=Choke

See [ATM Standard Flange](#) page for more info.

* The Standard Model Numbers above are the most common parts ordered for size, material and flange. However, these models can easily be altered to accommodate your needs by using the Model # code system to the left.

** These units are supplied with 2.9mm (K-type) connectors - square flange.

*** All data given at 20° C and sea level.

Type-N W/G - Coax Adapters

WG Size	Freq (GHz)	Model No.*	Power CW (Watts)	Peak Power (kW)	NEW High Power Model No.	Power CW (Watts)	Peak Power (kW)	Outline Drawing
NEW WR975	0.75 - 1.12	975-253A-2	200	3	975-253HPA-2	500	5	
WR650	1.12 - 1.70	650-253A-2	200	3	650-253HPA-2	500	5	Dwg
WR430	1.70 - 2.60	430-253A-2	200	3	430-253HPA-2	500	5	Dwg
WR340	2.20 - 3.30	340-253A-2	200	3	340-253HPA-2	500	5	Dwg
WR284	2.60 - 3.95	284-253A-6	200	3	284-253HPA-6	500	5	Dwg
WR229	3.30 - 4.90	229-253B-2	200	3	229-253HPB-2	500	5	Dwg
WR187	3.95 - 5.85	187-253A-6	200	3	187-253HPA-6	500	5	Dwg
WR159	4.90 - 7.05	159-253B-2	200	3	159-253HPB-2	500	5	Dwg
WR137	5.85 - 8.20	137-253B-2	200	3	137-253HPB-2	350	5	Dwg
WR112	7.05 - 10.0	112-253B-6	200	3	112-253HPB-6	350	5	Dwg
WR102	7.00 - 11.0	102-253A-6	200	3	102-253HPA-6	300	5	Dwg
WR90	8.20 - 12.4	90-253A-6	150	2	90-253HPA-6	300	5	Dwg
WR75	10.0 - 15.0	75-253A-6	150	2	75-253HPA-6	250	5	Dwg
WR62	12.4 - 18.0	62-253A-6	150	2	62-253HPA-6	250	5	Dwg

Ordering Information

W/G - Coax Adapter, Type-N

Example part number: **WR** - **Mod** **M** - **E**
 90 -253 A -6

Waveguide Size: (WR) WR28 thru WR975

Basic Model No.: (-Mod) 253=standard, 253HP=high power model

Material (M): A=Aluminum, B=Copper/Brass

Flange (-F): 1=CPRG, 2=CPRF, 6=Cover, 7=Choke

See [ATM Standard Flange](#) page for more info.

* The Standard Model Numbers above are the most common parts ordered for size, material and flange. However, these models can easily be altered to accommodate your needs by using the Model # code system to the left.

TNC W/G - Coax Adapters



WG Size	Freq. (GHz)	Model No.*	Power CW (Watts)	Peak Power (kW)	Outline Dwg.
WR650	1.12 - 1.70	650-255A-2	200	3	Dwg
WR430	1.70 - 2.60	430-255A-2	200	3	Dwg
WR340	2.20 - 3.30	340-255A-2	200	3	Dwg
WR284	2.60 - 3.95	284-255A-6	200	3	Dwg
WR229	3.30 - 4.90	229-255B-2	200	3	Dwg
WR187	3.95 - 5.85	187-255A-6	200	3	Dwg
WR159	4.90 - 7.05	159-255B-2	200	3	Dwg
WR137	5.85 - 8.20	137-255B-2	200	3	Dwg
WR112	7.05 - 10.0	112-255B-6	200	3	Dwg
WR102	7.00 - 11.0	102-255A-6	200	3	Dwg
WR90	8.20 - 12.4	90-255A-6	150	3	Dwg
WR75	10.0 - 15.0	75-255B-6	150	3	Dwg
WR62	12.4 - 18.0	62-255A-6	150	3	Dwg

Ordering Information

W/G - Coax Adapter, TNC

Example part number: **WR** **112** **-255** **B** **-6**

Waveguide Size: (WR) WR62 thru WR650

Basic Model No.: (-Mod)

Material (M): A=Aluminum, B=Copper/Brass

Flange (-F): 1=CPRG, 2=CPRF, 6=Cover, 7=Choke

See [ATM Standard Flange](#) page for more info.

* The Standard Model Numbers above are the most common parts ordered for size, material and flange. However, these models can easily be altered to accommodate your needs by using the Model # code system to the left.

Type SC W/G - Coax Adapters



WG Size	Freq. (GHz)	Model No.*	Power CW (Watts)	Peak Power (kW)	Outline Dwg.
WR650	1.12 - 1.70	650-258A-2	1600	3	Dwg
WR430	1.70 - 2.60	430-258A-2	1300	3	Dwg
WR340	2.20 - 3.30	340-258A-2	1100	3	Dwg
WR284	2.60 - 3.95	284-258A-6	975	3	Dwg
WR229	3.30 - 4.90	229-258B-2	850	3	Dwg
WR187	3.95 - 5.85	187-258A-6	780	3	Dwg
WR159	4.90 - 7.05	159-258B-2	700	3	Dwg
WR137	5.85 - 8.20	137-258B-2	650	3	Dwg
WR112	7.05 - 10.0	112-258B-6	575	3	Dwg

Ordering Information

W/G - Coax Adapter, SC

Example part number: **WR** 112 -258 **M** B -6 **-F**

Waveguide Size: (WR) WR112 thru WR650

Basic Model No.: (-Mod)

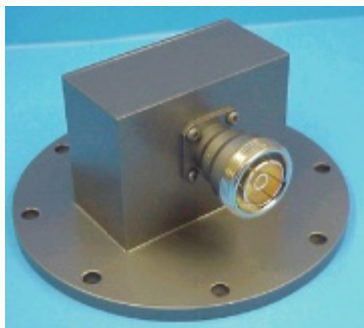
Material (M): A=Aluminum, B=Copper/Brass

Flange (-F): 1=CPRG, 2=CPRF, 6=Cover, 7=Choke

See [ATM Standard Flange](#) page for more info.

* The Standard Model Numbers above are the most common parts ordered for size, material and flange. However, these models can easily be altered to accommodate your needs by using the Model # code system to the left.

7/16" W/G - Coax Adapters



WG Size	Freq. (GHz)	Model No.*	Power CW (Watts)	Peak Power (kW)	Outline Dwg.
WR650	1.12 - 1.70	650-259A-2	200	3	Dwg
WR430	1.70 - 2.60	430-259A-2	200	3	Dwg
WR340	2.20 - 3.30	340-259A-2	200	3	Dwg
WR284	2.60 - 3.95	284-259A-6	200	3	Dwg
WR229	3.30 - 4.90	229-259B-2	200	3	Dwg
WR187	3.95 - 5.85	187-259A-6	200	3	Dwg
WR159	4.90 - 7.05	159-259B-2	200	3	Dwg
WR137	5.85 - 8.20	137-259B-2	200	3	Dwg

Ordering Information

W/G - Coax Adapter, 7-16"

Example part number: **WR** 137 -259 **M** -2

Waveguide Size: (WR) WR137 thru WR650

Basic Model No.: (-Mod)

Material (M): A=Aluminum, B=Copper/Brass

Flange (-F): 1=CPRG, 2=CPRF, 6=Cover, 7=Choke

See [ATM Standard Flange](#) page for more info.

* The Standard Model Numbers above are the most common parts ordered for size, material and flange. However, these models can easily be altered to accommodate your needs by using the Model # code system to the left.



- Full Waveguide Frequency Range.
- VSWR 1.25 or better typical on most models, low values available over narrow frequency.
- Multiple Flange Types available.
- Standard Connectors are SMA and Type-N. Others such as TNC also available, consult factory for details.
- Double Ridge W/G to Coax adapters are manufactured in aluminum only.

**GENERAL SPECIFICATIONS -
DOUBLE RIDGE W/G TO COAX ADAPTERS**

Electrical

VSWR: 1.25 Max

RF Connectors: SMA, Type-N, standard. TNC available

Mechanical

Body: Aluminum

Flanges: Multiple types available - see ATM Std. Flanges

Connectors: Stainless Steel

Operation Temp:

Finish: Unique corrosion resistant 316 stainless steel epoxy coating

IAW MIL-F-14072

Applicable Mil-Specs

General:

Product Specific:

FLANGE DESIGNATION & TYPE

DESIGNATION	TYPE	HOLES
- C1	COVER	ALTERNATE TAP/THRU
- C2		ALL TAPPED
- C3		ALL THRU
- G1	GROOVE	ALTERNATE TAP/THRU
- G2		ALL TAPPED
- G3		ALL THRU

SMA Double Ridge W/G - Coax Adapters

WG Size	Freq (GHz)	Model No.*	VSWR Max.	Power CW (Watts)	Peak Power (kW)	Outline Dwg
WRD250	2.6 - 7.8	250-251-C3	1.35	50	3	
WRD475	4.75 - 11.0	475-251-C3	1.25	50	3	
WRD580	5.8 - 16.0	580-251-C3	1.25	50	3	Dwg
WRD650	6.5 - 18.0	650-251-C3	1.25	50	3	Dwg
WRD750	7.5 - 18.0	750-251-C3	1.25	50	3	Dwg
WRD180	18.0 - 40.0	180-25K-C3**	1.50	10	3	Dwg

Ordering Information

W/G - Coax Endlaunch Adapter, SMA

Example part number:

WRD	-	Mod	-	F
580		-251		-C3

Waveguide Size: (WRD)
WRD250 thru WRD180 available

Basic Model No.: (-Mod)

Flange (-F): See table above for quick reference, or see [ATM Standard Flange](#) page for more info.

* The Standard Model Numbers above are the most common parts ordered for size, material and flange. However, these models can easily be altered to accommodate your needs by using the Model # code system to the left.

** These units are supplied with 2.9mm (K-type) connectors only.

Type-N Double Ridge W/G - Coax Adapters

WG Size	Freq (GHz)	Model No.*	VSWR Max.	Power CW (Watts)	Peak Power (kW)	Outline Dwg.
WRD250	2.6 - 7.8	250-253-C3	1.35	200	3	Dwg
WRD475	4.75 - 11.0	475-253-C3	1.25	200	3	Dwg
WRD580	5.8 - 16.0	580-253-C3	1.25	150	3	Dwg
WRD650	6.5 - 18.0	650-253-C3	1.25	150	3	Dwg
WRD750	7.5 - 18.0	750-253-C3	1.25	150	3	Dwg

Ordering Information

W/G - Coax Endlaunch Adapter, Type-N

Example part number: WRD - Mod - F
580 -253 -C3

Waveguide Size: (WRD)
WRD250 thru WRD750 available

Basic Model No.: (-Mod)

Flange (-F): See table above for quick reference
or see [ATM Standard Flange](#) page for more info.

*The Standard Model Numbers above are the most common parts ordered for size, material and flange. However, these models can easily be altered to accommodate your needs by using the Model # code system to the left.

High Power Type-N Double Ridge W/G - Coax Adapters

WG Size	Freq (GHz)	NEW High Power Model No.*	VSWR Max.	Power CW (Watts)	Peak Power (kW)	Outline Dwg.
WRD250	2.6 - 7.8	250-253HP-C3	1.35	1000	3	
WRD475	4.75 - 11.0	475-253HP-C3	1.25	750	3	Dwg
WRD580	5.8 - 16.0	580-253HP-C3	1.25	500	3	Dwg
WRD650	6.5 - 18.0	650-253HP-C3	1.25	500	3	Dwg
WRD750	7.5 - 18.0	750-253HP-C3	1.25	500	3	Dwg

Ordering Information

W/G - Coax Endlaunch Adapter, High Power, Type-N

Example part number: **WRD** - **Mod** - **F**
580 -253HP -C3

Waveguide Size: (WRD)

WRD250 thru WRD750 available

Basic Model No.: (-Mod)

Flange (-F): See table above for quick reference
 or see [ATM Standard Flange](#) page for more info.

*The Standard Model Numbers above are the most common parts ordered for size, material and flange. However, these models can easily be altered to accommodate your needs by using the Model # code system to the left.