

REVISIONS				
ECN	LTR	DESCRIPTION	DATE	APPROVED

FLANGE MTG. HOLES 10-32 UNC-28 X .31 (7.87) DP.

CONNECTOR MS3112E-12-10P

MTG. HOLES 8-32 UNC X .31 (7.87) DP.

SPECIFICATIONS:

RF:

- FREQ. 5.85 TO 8.20 GHz
- VSWR MAX 1.05 : 1
- INSERTION LOSS 0.02 dB
- ISOLATION MIN. 70 dB
- POWER MAX 12 KWCH
- UNPRESSURIZED 320.0 KW PEAK

ELECTRICAL:

- VOLTAGE 24 VDC +/- 10%
- CURRENT 1.5 AMPS MAX. @ 20 DEG. C
- SWITCHING TIME 60 MILLISECONDS

MECHANICAL:

- MATERIAL ALUMINUM (RF ASSY.)
- DRIVE REMOVABLE MOTOR DRIVE
- ASSEMBLY GENEVA LINKAGE
- PRESSURE 30 PSIG (RF HEAD ONLY)
- FINISH IRIDIUM PER MIL-C-5541
- LIFE PAINT DULL BLACK ENAMEL 500,000 CYCLES

ENVIRONMENTAL:

- TEMPERATURE OPERATIVE -40C TO +85C
- NON-OPERATIVE -55C TO +100C
- HUMIDITY 0-95% NO CONDENSATION

DIMENSIONS SPECIFIED		TOLERANCES		MODEL #	
DECIMAL	FRACTIONS	DECIMAL	FRACTIONS	MM137BPL7B3	
PLACE: .018	1/64	CHECKED	8/28/93	JT	
PLACE: .005	1/64	APPROVED			
ANGLES: VZ DEG.		APPROVED			
MATERIAL:					

WAVEGUIDE SWITCH POSITIONS

09080 B 9773-1

MM137BPL7B3

REVISIONS				
ECN	LTR	DESCRIPTION	DATE	APPROVED

FLANGE MTG. HOLES 10-32 UNC-28 X .31 (7.87) DP.

CONNECTOR MS3112E-10-6P

TYPE 'SMA' CONN.

MTG. HOLES 6-32-28 X .18 (4.57) DP. 2 N.S. 2 F.S.

SPECIFICATIONS:

RF:

- FREQUENCY RANGE 5.85 - 8.20 GHz
- VSWR (MAX) 1.05 : 1
- INSERTION LOSS (MAX) .02 dB
- ISOLATION (MIN) 70 dB

ELECTRICAL:

- VOLTAGE 28 VDC +/- 10%
- CURRENT 1.0 AMP MAX. @ 20 DEG. C
- SWITCHING TIME 100 MILLISECONDS

MECHANICAL:

- MATERIAL ALUMINUM (RF ASSY.)
- DRIVE REMOVABLE MOTOR DRIVE
- ASSEMBLY GENEVA LINKAGE
- PRESSURE 30 PSIG (RF HEAD ONLY)
- FINISH IRIDIUM PER MIL-C-5541
- LIFE PAINT DULL BLACK ENAMEL 500,000 CYCLES

ENVIRONMENTAL:

- TEMPERATURE OPERATIVE -40C TO +85C
- NON-OPERATIVE -55C TO +100C
- HUMIDITY 0-95% NO CONDENSATION

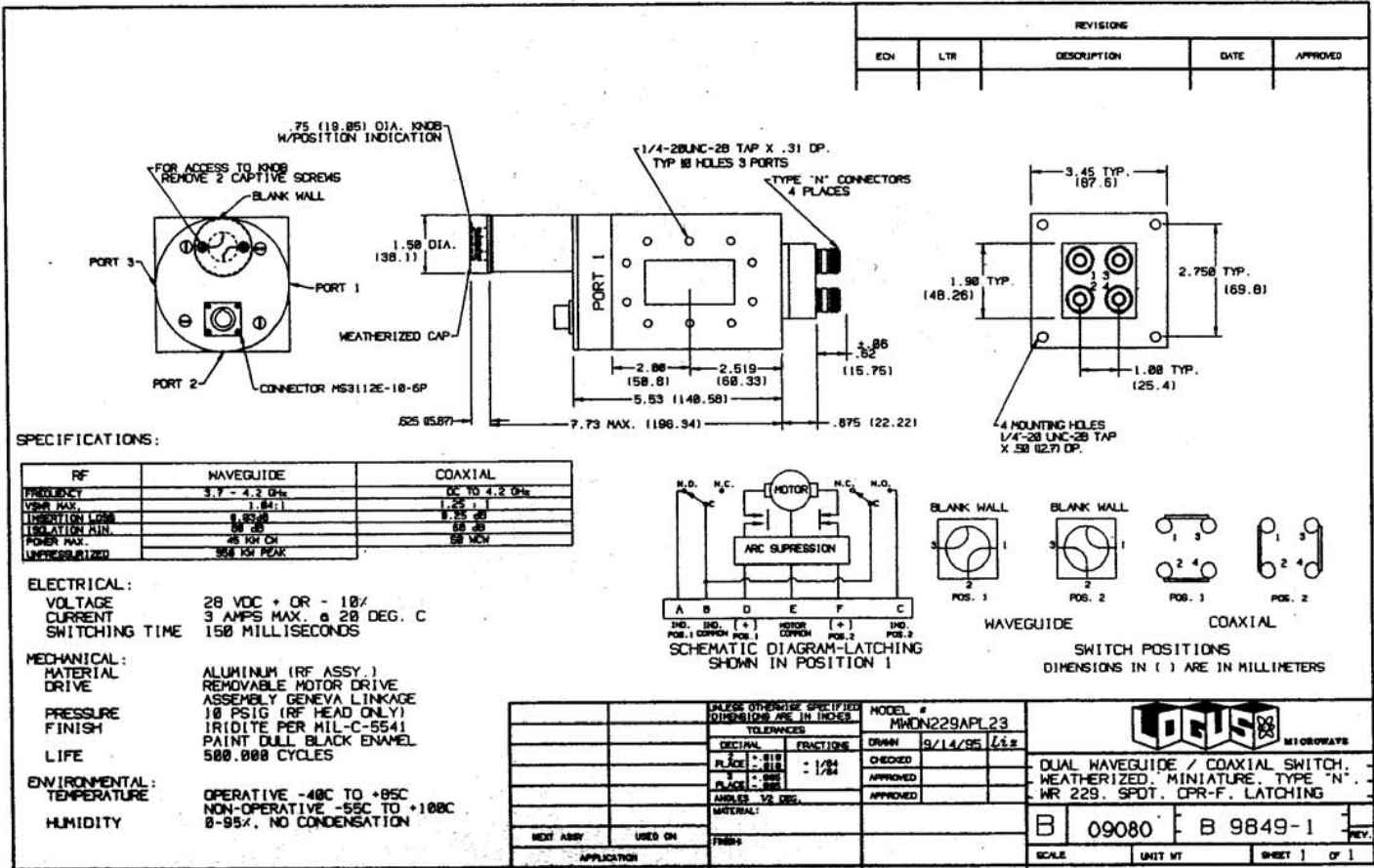
DIMENSIONS SPECIFIED		TOLERANCES		MODEL #	
DECIMAL	FRACTIONS	DECIMAL	FRACTIONS	MM137BPL23	
PLACE: .018	1/64	CHECKED	8/1/93	JT	
PLACE: .005	1/64	APPROVED			
ANGLES: VZ DEG.		APPROVED			
MATERIAL:					

WAVEGUIDE SWITCH POSITIONS

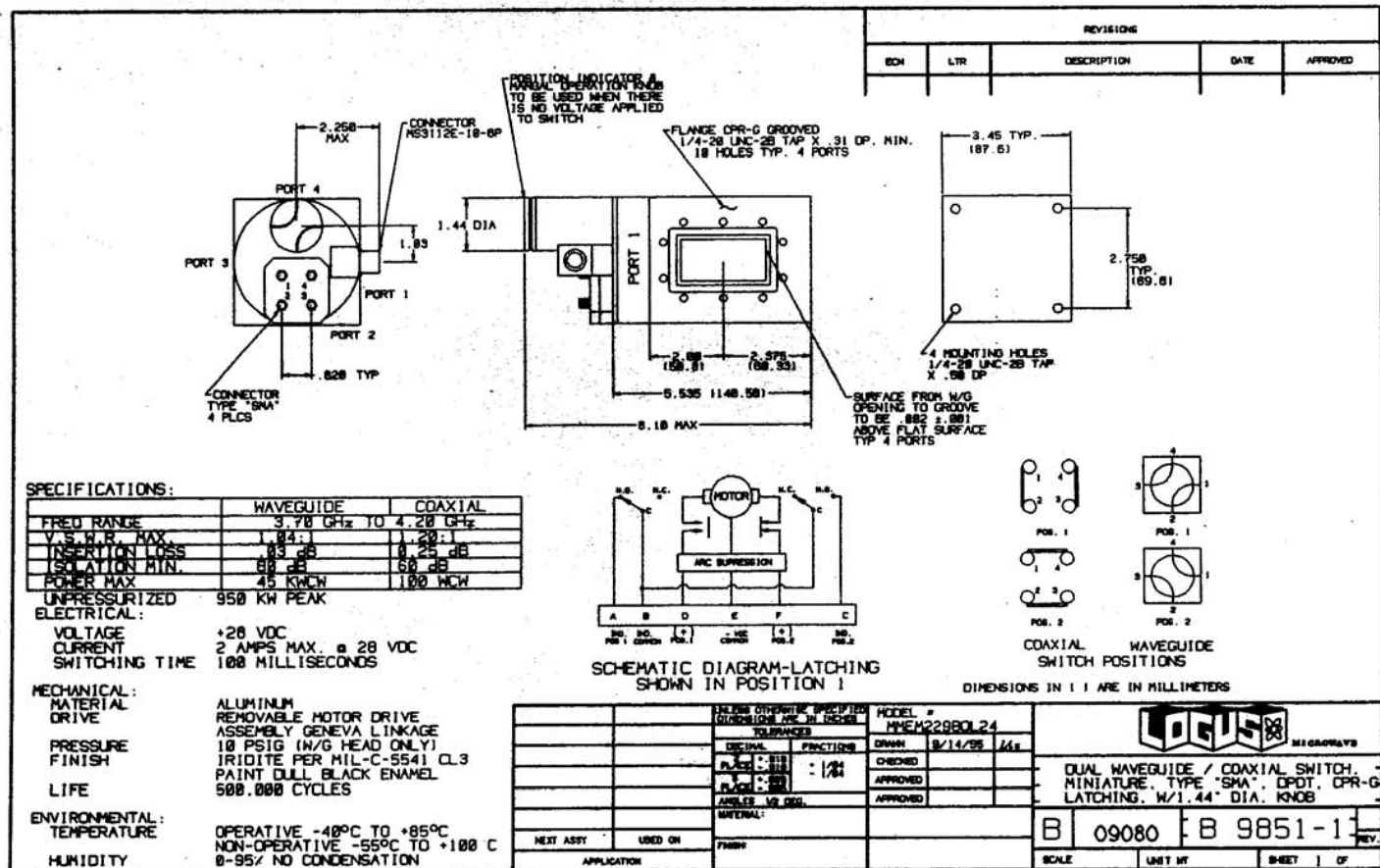
COAXIAL SWITCH POSITIONS

09080 B 9852-1

MM137BPL23



MWDN229APL23



MMEM229BQL24