

Model MSC Small Diameter High Capacity Load Button

Why the Interface model MSC Small Diameter High Capacity Load Button is the best in class:

- Proprietary Interface temperature compensated strain gages
- Small compact design
- Environmentally sealed
- Stainless steel construction
- Low deflection



STANDARD CONFIGURATION

5 ft Integral Cable

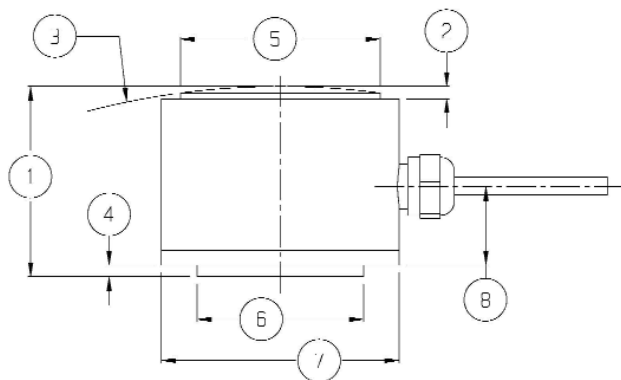
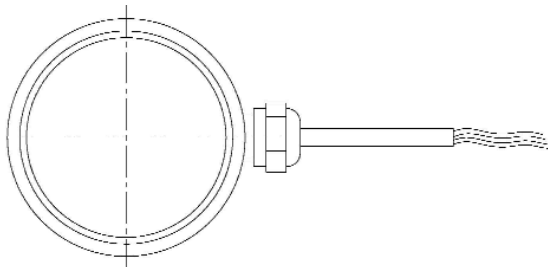
OPTIONS

Extra Cable Length

ACCESSORIES

Instrumentation

Consult factory for more technical information



SPECIFICATIONS

ACCURACY – MAX
 Nonlinearity - % FS.....±0.05
 Hysteresis - % FS.....±0.05
 Nonrepeatability - % RO.....±0.10
 Creep, in 20 min - %.....±0.15
 TEMPERATURE
 Compensated Range - °F.....70 to 170
 Compensated Range - °C.....21 to 77
 Operating Range - °F.....-40 to 175
 Operating Range - °C.....-40 to 80
 Effect on Output - %/°F – MAX.....±0.009
 Effect on Output - %/°C – MAX.....±0.005
 Effect on Zero - % RO/°F – MAX.....±0.0036
 Effect on Zero - % RO/°C – MAX.....±0.002
 ELECTRICAL
 Rated Output- mV/V (nominal)......2 +40%/-20%
 Zero Balance - %RO.....±2
 Bridge Resistance – Ohm (nominal).....350 +50/-3.5
 Excitation Voltage – MAX.....15 VDC
 Insulation Resistance – Megohm.....5000
 MECHANICAL
 Calibration.....Compression
 Safe Overload - % CAP.....150
 Cable length – ft.....5

DIMENSIONS

See Drawing	CAPACITY	
	U.S. (lbf)	Metric (N)
	15K, 20K, 30K	65K, 90K, 130K
	inch	mm
①	1.00	25.4
②	0.06	1.52
③	R 4.0 ±.5	101.6 ±13
④	0.06	1.52
⑤	1.05	26.67
⑥	0.875	22.23
⑦	1.25	31.75
⑧	.5 ±0.1	12.32