

# LC复合EMI滤波器LFB30额定电流1A系列

# CHIP TYPE LC EMI FILTER LFB30 SERIES (Rated Current:1A)

LC复合EMI滤波器LFB30额定电流1A系列是采用将电介质和磁介质复合并一体化烧结而成的材料生产的高性能EMI滤波器。具有急剧的插入损失特性，并可适应大电流（~1A），最适用于DC电源线路的高频降噪方案。

Our "LFB30" series chip type LC EMI filter is an extremely efficient EMI filter made of a combination of both dielectric and magnetic materials. They have steep insertion loss characteristic, and high current rating (~1A) makes it well suited for reducing EMI noise on DC power lines.

## 特点

- 采用电介质和磁介质一体化的单片结构。
- 急剧的插入损失特性。
- 可应对宽频率范围的降噪方案。
- 无方向极性，使用方便。
- 适应大电流（~1A），有效抑制DC电源线路的EMI噪声。

## Features

- Monolithic construction of dielectric and magnetic materials
- Steep insertion loss characteristics
- Removes noise over a wide range
- Easy to place since there is no polarity
- High current rating (~1A) makes it well suited for reducing EMI noise on DC power lines.

## 用途

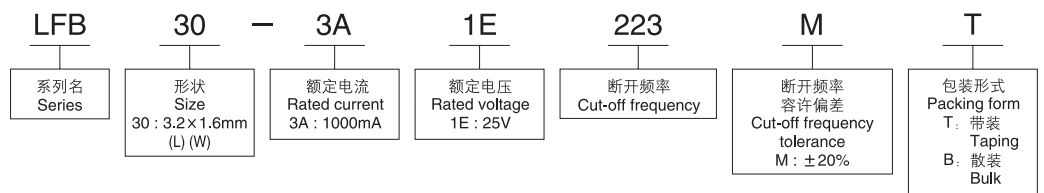
计算机及其外围设备、数字电视、数字录像机、移动电话等的DC电源线路的降噪方案。

## Applications

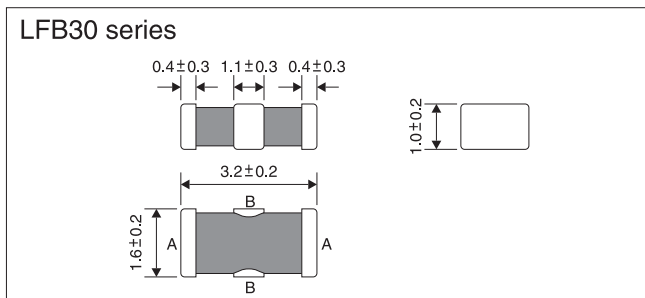
Noise reduction of DC power lines for computers, computer peripheral equipment, digital TV, cellular telephone, etc.



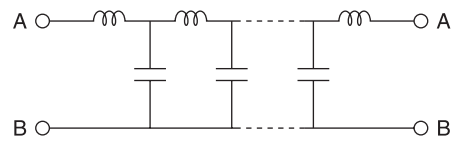
## 型号构成 Part number system



## 形状·尺寸(mm) Dimensions (mm)



## 等效电路 Equivalent circuits

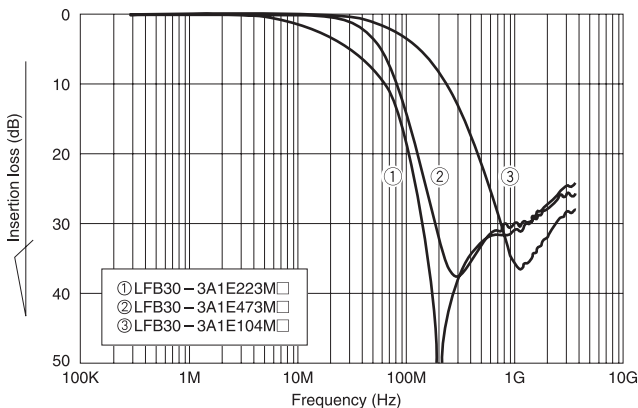


## 型号一览表 Part number list

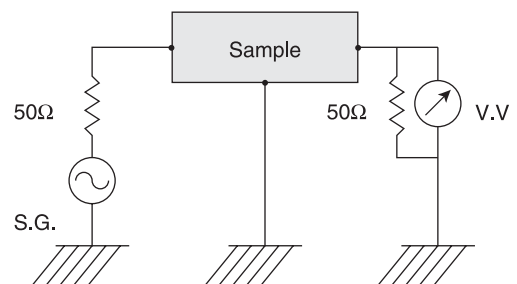
型号 Part number	断开频率 Cut-off frequency	断开频率容许偏差 Cut-off frequency tolerance	额定电压 Rated voltage	额定电流 Rated current	绝缘阻抗 Insulation Resistance	使用温度范围 Operating Temp. range
LFB30-3A1E223M□	22MHz	±20%	25V	1000mA	10MΩmin.	-25°C~+85°C
LFB30-3A1E473M□	47MHz					
LFB30-3A1E104M□	100MHz					

- : T表示带装, B表示散装  
□: "T" stands for taping package and "B" stands for bulk package.

## 插入损失特性(参考) Insertion loss (Reference)



## 电路图 Test circuit



EMI滤波器LFB20、LFB30系列2A产品是小型高性能EMI滤波器,用于要求大容许电流的电源线路。本产品适合于消除电源线路中的低频—高频的宽频率范围内的噪声,是3端子形状的小型表面组装元件。

Our "LFB20, LFB30" series chip type EMI filter is an extremely efficient & small EMI filter for power lines which require large rated current. They are well suited for wide range noise reduction on DC power lines.

**特点**

- 额定电流2A。
- 可消除从低频率开始的宽频率范围内的噪声。
- 小型、低高度,使用方便。
- LFB30型可打上标记。

**Features**

- Rated current is 2 ampere.
- Remove noise over a wide range from low frequency.
- Miniature and low profile and easy to place since there is no polarity.
- Marking type is available for LFB30 Type.

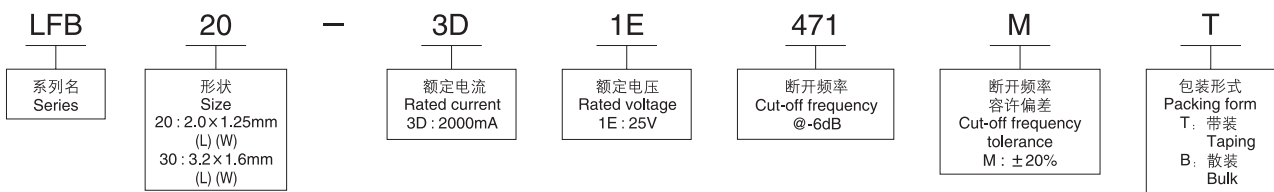
**用途**

AV设备、计算机及其外围设备的DC电源线路。

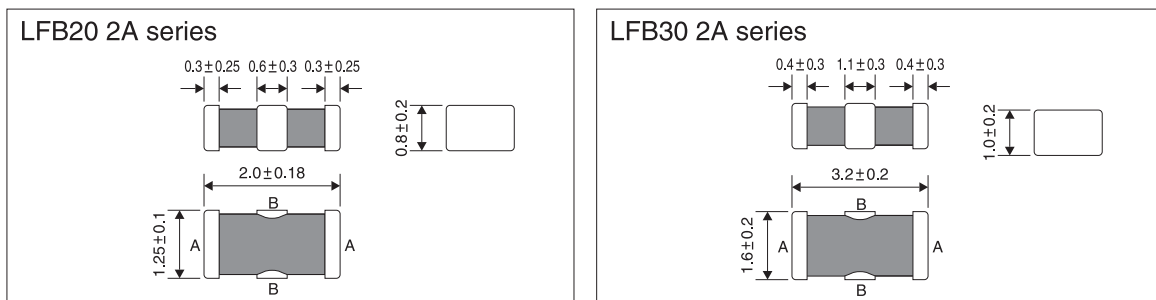
**Applications**

Noise reduction of DC power lines for AV equipment, computer and computer peripheral equipment.

**型号构成 Part number system**



**形状·尺寸(mm) Dimensions (mm)**

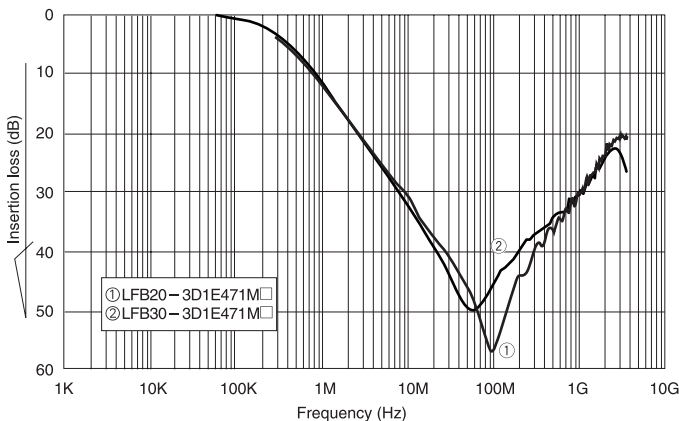


**型号一览表 Part number list**

型号 Part number	断开频率 Cut-off frequency	断开频率容许偏差 Cut-off frequency tolerance	额定电压 Rated voltage	额定电流 Rated current	绝缘阻抗 Insulation Resistance	使用温度范围 Operating Temp. range
LFB20-3D1E471M□	470KHz	±20%	25V	2000mA	10MΩmin.	-40°C ~ +85°C
LFB30-3D1E471M□						

□: T表示带装、B表示散装  
 □: "T" stands for taping package and "B" stands for bulk package.

**插入损失特性(参考) Insertion loss (Reference)**



**电路图 Test circuit**

