

LC复合EMI滤波器LFA24、LFH24系列是复合L(电感器)和C(电容器)的高性能单片EMI滤波器阵列。该产品采用2012或2010形状, 内置4个LC多级电路, 是3端子型的阵列, 衰减系数大、除噪频带宽, 适合于抑制信号线路中的高频噪声。LFA24、LFH24系列为分布常数电路。

Our "LFA24, LFH24" series are extremely efficient EMI filter arrays with monolithic construction of inductor and capacitor elements. They are 3 terminal arrays of 4 LC circuits in a 0805 or 0804 package, suitable for noise reduction on high frequency signal lines, due to steep and wide-band insertion loss characteristics. LFA24 and LFH24 series have distributed element circuits.

**特点**

- 内置4线LC多级电路, 适合于高密度线路。
- 小型、薄型。
- 具有急剧的插入损失特性和宽范围的噪声吸收频带。
- LFH24系列为小型产品。(2.0×1.0mm)

**Features**

- Array of 4 LC filters, suitable for high density circuit lines.
- Ultra miniature and low profile type
- Steep insertion loss characteristics and removes noise over a wide range.
- LFH24 series is smaller. (0804 size)

**用途**

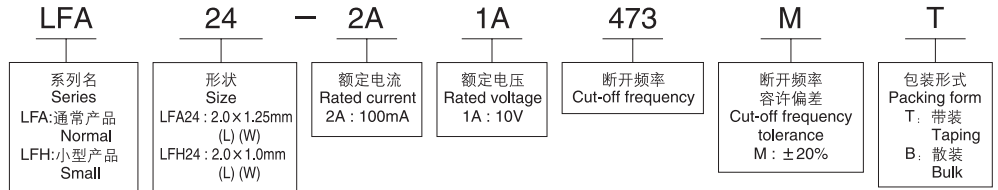
- 数字影像设备、移动电话

**Applications**

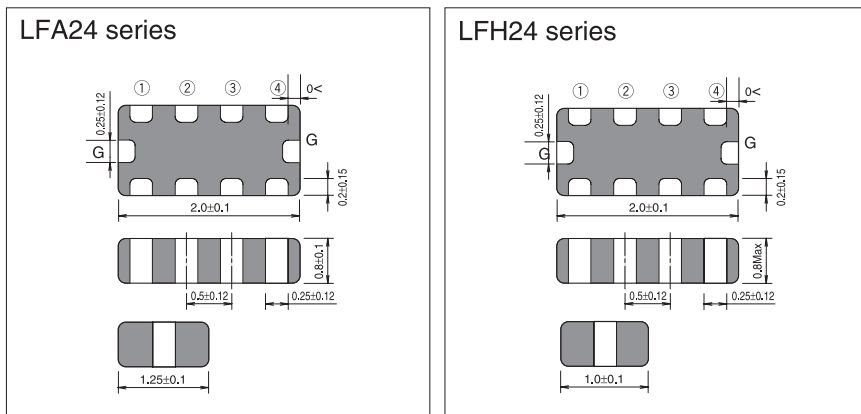
- For digital AV equipment and cellular phone.



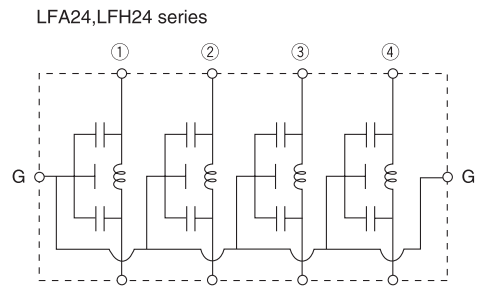
**型号构成 Part number system**



**形状·尺寸(mm) Dimensions (mm)**



**等效电路 Equivalent circuits**

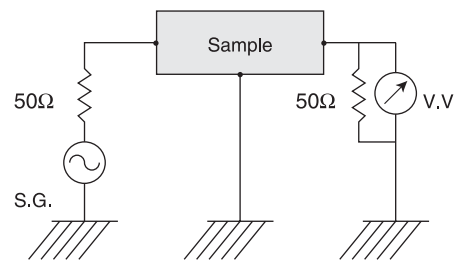


**型号一览表 Part number list**

| 型号<br>Part number | 断开频率<br>Cut-off frequency | 断开频率容许偏差<br>Cut-off frequency tolerance | 额定电压<br>Rated voltage | 额定电流<br>Rated current | 绝缘阻抗<br>Insulation Resistance | 使用温度范围<br>Operating Temp. range |
|-------------------|---------------------------|---|-----------------------|-----------------------|-------------------------------|---------------------------------|
| LFA24-2A1A473M□   | 47MHz                     | ±20%                                    | 10V                   | 100mA                 | 10MΩmin.                      | -40°C ~ +85°C                   |
| LFA24-2A1A683M□   | 68MHz                     |   |                       |                       |                               |                                 |
| LFA24-2A1A823M□   | 82MHz                     |   |                       |                       |                               |                                 |
| LFA24-2A1A104M□   | 100MHz                    |   |                       |                       |                               |                                 |
| LFA24-2A1A144M□   | 140MHz                    |   |                       |                       |                               |                                 |
| LFH24-2A1A144M□   | 140MHz                    |   |                       |                       |                               |                                 |

□: T表示带装, B表示散装  
 □: "T" stands for taping package and "B" stands for bulk package.

**电路图**



**插入损失特性(参考) Insertion loss (Reference)**

