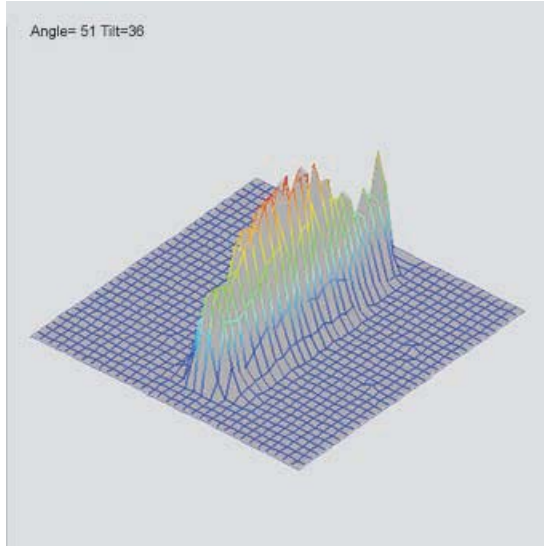


Model IMM-1255FB-635-1-E-G-L

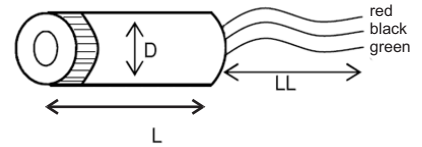
Order Number: 1206000002 www.sensor-ic.com/ TEL: 0755-83376549 FAX: 0755-83376182 E-MAIL: szss20@163.com

Applications

- Industrial alignment
- Positioning
- Light barriers
- Metrology



Typical Beam Profile



Dimensions according to DIN ISO 2768 f if not specified otherwise. Drawing not in scale

D (mm)	12
L (mm)	55 ²⁾
LL (mm)	150 ± 20

Parameter @ Tc=25°C	Min.	Typ.	Max.
Wave length	n. a.	635 nm	640 nm
Operating temperature	-10 °C	25 °C	40 °C
Storage temperature	-25 °C	n. a.	70 °C
Beam diameter @ 1/e ²		3.4 x 0.8 mm ²	
Focal length range	20 mm		∞
Beam divergence			0.8 mrad
Beam deviation			25 mrad
Optical output power			0.99 mW
Operating voltage Vcc	4.5 V DC		5.5 V DC
Operating current			55 mA
Laser protection class	2 @ max. Popt		
Lens type	Aspherical glass lens		
Casing	Aluminium black anodized		
Beam setting	Adjustable focus		

Compliant with RoHS-requirements (2002/95/EG vom 27.01.2003)

- Features:**
- Modulation / Power adjustment via analog input
 - Threaded focus adjustment
 - Diaphragm optional
 - Case insulated

Note: The above product specifications are subject to change without notice.

¹⁾ optional

²⁾ typ. @ collimated beam



Electro Optical Components, Inc.

<http://www.sensor-ic.com/> TEL: 0755-83376489 FAX: 0755-83376182 E-MAIL: szss20@163.com

5460 Skylane Boulevard, Santa Rosa, CA 95403

Phone: (707) 568-1642 • FAX: (707) 568-1652