

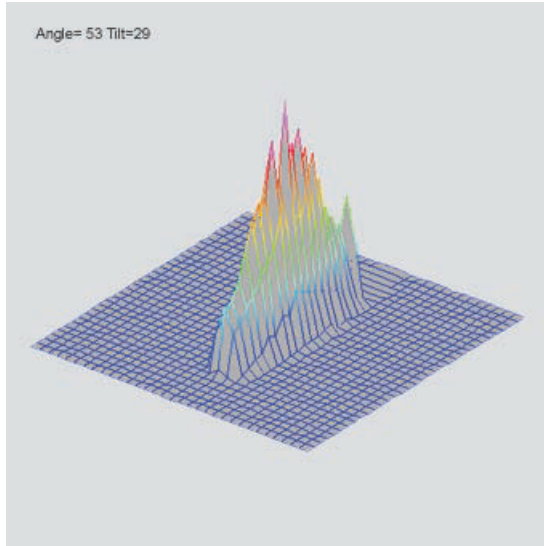
Collimator IMK-0508-E-K-DL-650-5-50

SUNSTAR传感与控制 <http://www.sensor-ic.com/> TEL:0755-83376549 FAX:0755-83376182 E-MAIL:szss20@163.com
Order Number: 1106000001

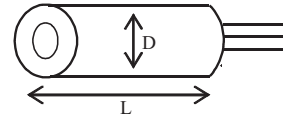


Applications

- Positioning
- Construction laser applications
- Light barriers
- Levelling



Typical Beam Profile



Dimensions according to DIN ISO 2768 f
if not specified otherwise. Drawing not in scale

D (mm)	5
L (mm)	8

Parameter @ Tc = 25 °C	Min.	Typ.	Max.
Wave length	n. a.	655 nm	660 nm
Threshold current	n. a.	15 mA	20 mA
Operating current	n. a.	20 mA	22 mA
Operating voltage	n. a.	2.2 V	2.5 V
Monitor diode current	0.05 mA	0.1 mA	0.3 mA
Optical power	n. a.	4.3 mW	6 mW
Operating temperature	5 °C	n. a.	50 °C
Storage temperature	-25 °C	n. a.	70 °C
Beam diameter @ 1/e ²		2.5 x 0.6 mm ²	
Beam deviation			30 mrad
Beam divergence			1.5 mrad
Laser protection class	3B		
Lens type	Aspherical plastic lens		
Casing	Aluminium natural colour		
PINOUT	1		
Suitable laser diode controllers	IMS-WKL1-01, IMS-5/250J-1		

Compliant with RoHS-requirements (2002/95/EG vom 27.01.2003)

Note: The above product specifications are subject to change without notice.



Electro Optical Components, Inc.

SUNSTAR 传感与控制 <http://www.sensor-ic.com/> TEL: 0755-83376489 FAX: 0755-83376182 E-MAIL: szss20@163.com

5460 Skylane Boulevard, Santa Rosa, CA 95403

Phone: (707) 568-1642 • FAX: (707) 568-1652