

# Fiber Optic Fault Locators and Accessories



# Fiber Optic Fault Locator

Made in Germany

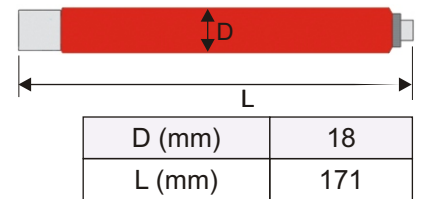
## FIBERPOINT® 250

Part Number: 1401000002



- Applications:**
- The compact design of the visual fault locator is very suitable for **daily use** in all fiber optic applications e.g. **in the field, in industrial environment as well as in laboratory.**
  - To check **singlemode/multimode** optical fibers and other fiber optic components on faults.
  - **Patching** of fibers.

Patented universal port 2.5 mm



Parameter	Min.	Typ.	Max.
Wavelength		635 nm	
Operation temperature	- 10 °C		45 °C
Storage temperature	- 40 °C		70 °C
Fiber coupled power	(Singlemode fiber 9/125 µm)	500 µW	700 µW
	(Multimode fiber 50/125 µm)	500 µW	800 µW
Optical output power			1 mW
Operation current		40 mA	
Retention force for ferrule		1 - 2 N	
Weight incl. batteries		100 g	
Operation time - one battery pack <sup>1</sup> (Pulsed mode)		40 hours	
Battery type		AAA	
Operation mode	<b>pulsed mode:</b> frequency 2 - 3 Hz		
Laser protection class	2		
Suitable ferrule 2.5 mm	DIN, E2000, FC, SC, ST		

- Included in delivery:**
- Dust cap
  - One battery pack
  - Instruction manual
  - "Quadrosafe" economy plastic shipping box

**Accessories (not included):** - Adapters please see page 8/9 this brochure

- Feature:**
- Private labelling is available instead of stamping "FIBERPOINT® 250"
  - One-time charge applies
  - Minimum order quantity applies

Notes: Do not use rechargeable batteries.

Compliant with RoHS-requirements (2002/95/EG vom 27.01.2003)

The above product specifications are subject to change without notice.

<sup>1)</sup> Battery: VARTA Industrial Alkaline No. 4003; 1.5 V; AAA; LR03 Micro; AM4; MN2400

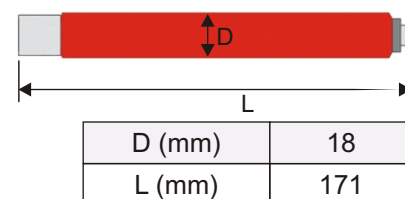
**FIBERPOINT® 250D**

Part Number: 1401000013



- Applications:**
- The compact design of the visual fault locator is very suitable for **daily use** in all fiber optic applications e.g. **in the field, in industrial environment as well as in laboratory.**
  - To check **singlemode/multimode** optical fibers and other fiber optic components on faults.
  - **Patching** of fibers.

Patented universal port 2.5 mm



Parameter	Min.	Typ.	Max.
Wavelength		635 nm	
Operation temperature	- 10 °C		45 °C
Storage temperature	- 40 °C		70 °C
Fiber coupled power	(Singlemode fiber 9/125 μm)	500 μW	700 μW
	(Multimode fiber 50/125 μm)	500 μW	800 μW
Optical output power			1 mW
Operation current		40 mA	
Retention force for ferrule		1 - 2 N	
Weight incl. batteries		100 g	
Operation time - one battery pack <sup>1</sup> (Pulsed mode)		40 hours	
Battery type		AAA	
Operation mode	<b>continuous wave</b>		
Laser protection class	2		
Suitable ferrule 2.5 mm	DIN, E2000, FC, SC, ST		

- Included in delivery:**
- Dust cap
  - One battery pack
  - Instruction manual
  - "Quadrosafe" economy plastic shipping box

- Accessories (not included):**
- Adapters please see page 8/9 this brochure

- Feature:**
- Private labelling is available instead of stamping "FIBERPOINT® 250"
  - One-time charge applies
  - Minimum order quantity applies

Notes: Do not use rechargeable batteries.

Compliant with RoHS-requirements (2002/95/EG vom 27.01.2003)

The above product specifications are subject to change without notice.

<sup>1)</sup> Battery: VARTA Industrial Alkaline No. 4003; 1.5 V; AAA; LR03 Micro; AM4; MN2400

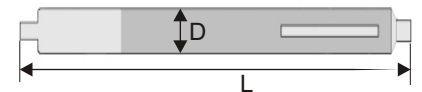
**FIBERPOINT® 250MD**

Part Number: 1400000030Q / 1400000030E



Patented universal port 2.5 mm

- Applications:**
- The compact design of the visual fault locator is very suitable for **daily use** in all fiber optic applications e.g. **in the field, in industrial environment as well as in laboratory.**
  - To check **singlemode/multimode** optical fibers and other fiber optic components on faults.
  - **Patching** of fibers.



D (mm)	12
L (mm)	167

Parameter	Min.	Typ.	Max.
Wavelength		635 nm	
Operation temperature	- 10 °C		45 °C
Storage temperature	- 40 °C		70 °C
Fiber coupled power	(Singlemode fiber 9/125 μm)	500 μW	700 μW
	(Multimode fiber 50/125 μm)	500 μW	800 μW
Optical output power			1 mW
Operation current		40 mA	
Retention force for ferrule		1 - 2 N	
Weight incl. batteries		60 g	
Operation time - one battery pack <sup>1</sup> (Pulsed mode)		40 hours	
Battery type		AAA	
Operation mode	<b>continuous wave; pulsed mode: frequency 2 - 3 Hz</b>		
Laser protection class	2		
Suitable ferrule 2.5 mm	DIN, E2000, FC, SC, ST		

- Included in delivery:**
- Dust cap
  - One battery pack
  - Instruction manual

**Accessories (not included):** - Adapters please see page 8/9 this brochure

**Order number:**

- 1400000030Q: Individually packed in "Quadrosafe"
- 1400000030E: Individually packed in etui style plastic packaging

**Feature:**

- Private labelling is available
- Minimum order quantity applies

Notes: Do not use rechargeable batteries.

**Compliant with RoHS-requirements (2002/95/EG vom 27.01.2003)**

**The above product specifications are subject to change without notice.**

<sup>1)</sup> Battery: VARTA Industrial Alkaline No. 4003; 1.5 V; AAA; LR03 Micro; AM4; MN2400

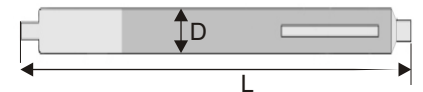
**FIBERPOINT® 250G**

Part Number: 1401000026A



Patented universal port 2.5 mm

- Applications:**
- The compact design of the visual fault locator is very suitable for **daily use** in all fiber optic applications e.g. **in the field, in industrial environment as well as in laboratory.**
  - To check **singlemode/multimode** optical fibers and other fiber optic components on faults.
  - **Patching** of fibers.



D (mm)	12
L (mm)	~180

Parameter	Min.	Typ.	Max.
Wavelength		532 nm	
Operation temperature	20 °C		30 °C
Storage temperature	- 40 °C		70 °C
Fiber coupled power	(Singlemode fiber 9/125 μm)	500 μW	700 μW
	(Multimode fiber 50/125 μm)	500 μW	800 μW
Optical output power			1 mW
Operation current		300 mA	
Retention force for ferrule		1 - 2 N	
Weight incl. batteries		60 g	
Battery type		AAA	
Operation mode	<b>pulsed mode: frequency 2 - 3 Hz</b>		
Laser protection class	2M		
Suitable ferrule 2.5 mm	DIN, E2000, FC, SC, ST		

- Included in delivery:**
- Dust cap
  - One battery pack
  - Instruction manual
  - "Quadrosafe" economy plastic shipping box

**Accessories (not included):** - Adapters please see page 8/9 this brochure

- Feature:**
- Private labelling is available
  - Minimum order quantity applies

Notes: Do not use rechargeable batteries.

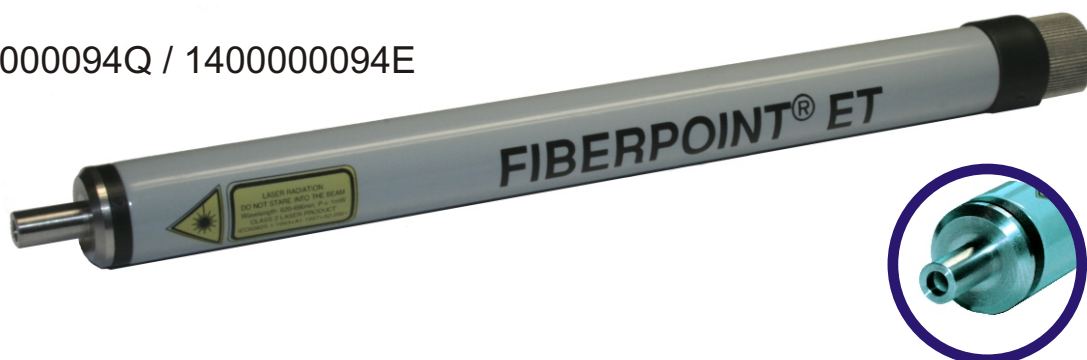
**Compliant with RoHS-requirements (2002/95/EG vom 27.01.2003)**

**The above product specifications are subject to change without notice.**

<sup>1)</sup> Battery: VARTA Industrial Alkaline No. 4003; 1.5 V; AAA; LR03 Micro; AM4; MN2400

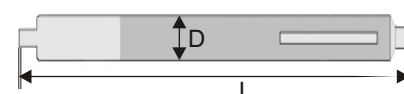
**FIBERPOINT® ET**

Part Number: 1400000094Q / 1400000094E



Patented universal port 2.5 mm

- Applications:**
- The compact design of the visual fault locator is very suitable for **daily use** in all fiber optic applications e.g. **in the field, in industrial environment as well as in laboratory.**
  - To check **singlemode/multimode** optical fibers and other fiber optic components on faults.
  - **Patching** of fibers.



D (mm)	12.1
L (mm)	156,5

Parameter	Min.	Typ.	Max.
Wavelength	650 nm	655 nm	660 nm
Operation temperature	- 10 °C		45 °C
Storage temperature	- 40 °C		70 °C
Fiber coupled power	(Singlemode fiber 9/125 μm)	200 μW	350 μW
	(Multimode fiber 50/125 μm)	200 μW	600 μW
Optical output power			1 mW
Operation current		35 mA	
Retention force for ferrule		1 - 2 N	
Weight incl. batteries		70 g	
Operation time - one battery pack <sup>1</sup> (Pulsed mode)		40 hours	
Battery type		AAA	
Operation mode	<b>continuous wave; pulsed mode:</b> frequency: 2 - 3 Hz		
Laser protection class	2		
Suitable ferrule 2.5 mm	DIN, E2000, FC, SC, ST		

- Included in delivery:**
- Dust cap
  - One battery pack
  - Instruction manual

- Accessories (not included):** - Adapters please see page 8/9 this brochure

- Order number:**
- 1400000094Q: Individually packed in "Quadrosafe"
  - 1400000094E: Individually packed in etui style plastic packaging

- Feature:**
- Private labelling is available
  - Minimum order quantity applies
  - For resellers only

Notes: Do not use rechargeable batteries.

Compliant with RoHS-requirements (2002/95/EG vom 27.01.2003)

The above product specifications are subject to change without notice.

<sup>1)</sup> Battery: VARTA Industrial Alkaline No. 4003; 1.5 V; AAA; LR03 Micro; AM4; MN2400

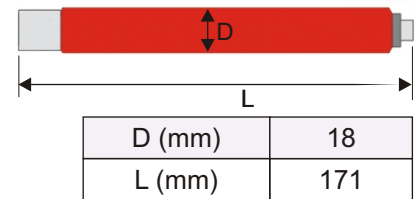
**FIBERPOINT® 250HP / HPD**

Part Number: 1401000007 / 1401000012



- Applications:**
- The compact design of the visual fault locator is very suitable for **daily use** in all fiber optic applications e.g. **in the field, in industrial environment as well as in laboratory.**
  - To check **singlemode/multimode** optical fibers and other fiber optic components on faults.
  - **Patching** of fibers.

Patented universal port 2.5 mm



Parameter @ Tc = 25°C		Min.	Typ.	Max.
Wavelength		630 nm	638 nm	642 nm
Operation temperature		- 10 °C		45 °C
Storage temperature		- 40 °C		70 °C
Fiber coupled power	(Singlemode fiber 9/125 µm)	1400 µW		1700 µW
	(Multimode fiber 50/125 µm)	1400 µW		2000 µW
Optical output power				5 mW
Operation current			40 mA	
Retention force for ferrule			1 - 2 N	
Weight incl. batteries			100 g	
Battery type			AAA	
Operation mode		<b>pulsed mode:</b> frequency 2 - 3 Hz (250HP), cw (250HPD)		
Laser protection class		3R		
Suitable ferrule 2.5 mm		DIN, E2000, FC, SC, ST		

- Included in delivery:**
- Dust cap
  - One battery pack
  - Instruction manual
  - “Quadrosafe” economy plastic shipping box

**Accessories (not included):** - Adapters please see page 8/9 this brochure

- Feature:**
- Private labelling is available instead of stamping “FIBERPOINT® 250”
  - One-time charge applies
  - Minimum order quantity applies

Notes: Do not use rechargeable batteries.

**Compliant with RoHS-requirements (2002/95/EG vom 27.01.2003)**

**The above product specifications are subject to change without notice.**

<sup>1)</sup> Battery: VARTA Industrial Alkaline No. 4003; 1.5 V; AAA; LR03 Micro; AM4; MN2400

## Accessoires

### Adapter 2.50 mm to 1.25 mm

Part Number: 1400000070



**Applications:** - Adapts patented **2.50 mm FIBERPOINT®** connection to a **1.25 mm** connection. Consequently you can check most of the popular fiber connector types with just one fiber optic fault locator.



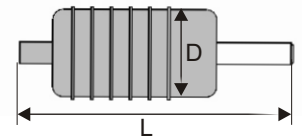
FIBERPOINT® 250 with Adapter



FIBERPOINT® 250MD with Adapter



1.25 mm side



D (mm)	8.5
L (mm)	26

Parameter	Specification
Side of the FIBERPOINT®	2.50 mm SM-ferrule
Side of the fiber	1.25 mm connection for LC, MU, F3000 etc.
Attenuation	< 1.0 dB
Weight	10 g

**Included in delivery:** - Dust cap on both sides  
- Plastic foil bag packaging

Compliant with RoHS-requirements (2002/95/EG vom 27.01.2003)

Note: The above product specifications are subject to change without notice.



## Accessoires

### Adapter for POF (polymer optical fiber)

Part Number: 1400000078



**Applications:** - Adapts the patented **2.50 mm FIBERPOINT®** connection to a **1.5 and 2.2 mm outer diameter polymer optical fiber** connection. Consequently you can check both popular fiber diameters with one fiber optic fault locator.

Parameter	Specification
Side of the FIBERPOINT®	2.50 mm SM-ferrule
Side of the fiber	1.5 and 2.2 mm
Attenuation	typ. < 1.0 dB
Weight	8.5 g

**Included in delivery:** - Dust cap on both sides  
- Plastic foil bag packaging

### Adapter for SMA

Part Number: 1400000088



**Applications:** - Adapts patented **2.50 mm FIBERPOINT®** connection to **SMA 905** connection. Consequently you can check both popular fiber connector types with just one fiber optic fault locator.

Parameter	Specification
Side of the FIBERPOINT®	2.50 mm SM-ferrule
Side of the fiber	SMA 905 connector
Attenuation	typ. < 1.0 dB
Weight	3.5 g

**Included in delivery:** - Dust cap on both sides  
- Plastic foil packaging

Compliant with RoHS-requirements (2002/95/EG vom 27.01.2003)

Note: The above product specifications are subject to change without notice.

## IMM Photonics GmbH

Ohmstraße 4  
85716 Unterschleißheim  
Germany

Tel.: +49 89 321412-0  
Fax: +49 89 321412-11

[www.imm-photonics.de](http://www.imm-photonics.de)  
[sales@imm-photonics.de](mailto:sales@imm-photonics.de)

Release: 02-2011  
© by IMM Photonics GmbH