



e2v technologies

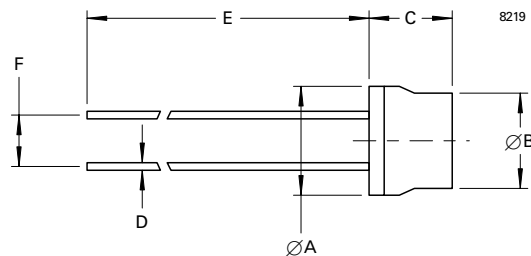
VQ61
Catalytic Pellistor

PERFORMANCE

Gases detected methane and most combustible gases and vapours
 Operating range 0 to 100% LEL
 Operating mode (constant voltage) 3.3 ± 0.2 V
 Operating current 70 ± 5 mA
 Output sensitivity > 25 mV/ % methane
 Response time (t90) < 15 seconds
 Temperature range -40 to +50 °C
 Long-term zero drift < 5% LEL/year (methane)
 Long-term sensitivity drift < 2.5% signal/month (methane)
 Linearity < 10% LEL up to 100% LEL
 Warranty period 12 months from date of despatch
 Poison resistance to silicones and hydrogen sulfide

OUTLINE

(All dimensions without limits are nominal)



Ref	Millimetres
A	7.35 max 7.10 min
B	6.4 max 6.2 min
C	5.5
D	0.5
E	43.0 max 40.0 min
F	3.7 max 3.5 min

Whilst e2v technologies has taken care to ensure the accuracy of the information contained herein it accepts no responsibility for the consequences of any use thereof and also reserves the right to change the specification of goods without notice. e2v technologies accepts no liability beyond that set out in its standard conditions of sale in respect of infringement of third party patents arising from the use of tubes or other devices in accordance with information contained herein.

e2v technologies limited, Waterhouse Lane, Chelmsford, Essex CM1 2QU England Telephone: +44 (0)1245 493493 Facsimile: +44 (0)1245 492492
 e-mail: enquiries@e2vtechnologies.com Internet: www.e2vtechnologies.com Holding Company: e2v holdings limited

e2v technologies inc. 4 Westchester Plaza, PO Box 1482, Elmsford, NY10523-1482 USA Telephone: (914) 592-6050 Facsimile: (914) 592-5148
 e-mail: enquiries@e2vtechnologies.us