



# BELLOWS PRESSURE SENSORS

## FOR PRESSURE SWITCH



### HAUPTMERKMALE

- ◆ Fühler: Balg
- ◆ Messbereich:
  - Druck: -0.9...1.5 bis 10...100 bar
  - Druckdifferenz: -0.6...3.4 bis 1...16 bar
- ◆ Anwendung: Druckschalter

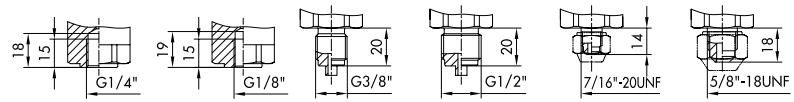
### CARACTÈRES DISTINCTIFS

- ◆ Capteur: soufflet
- ◆ Plage de mesure:
  - Pression: -0.9...1.5 à 10...100 bar
  - Press. différentielle: -0.6...3.4 à 1...16 bar
- ◆ Application: Interrupteur à pression

### MAIN CHARACTERISTICS

- ◆ Sensor: bellows
- ◆ Measuring range:
  - Pressure: -0.9...1.5 bis 10...100 bar
  - Differential pressure: -0.6...3.4 to 1...16 bar
- ◆ Application: Pressure switch

**FÜR DRUCKSCHALTER / POUR INTERRUPTEUR À PRESSION / FOR PRESSURE SWITCH:  
900, 901, 902, 903, 904, 905, 906, 907, 912, 915, 940, 941, 942**



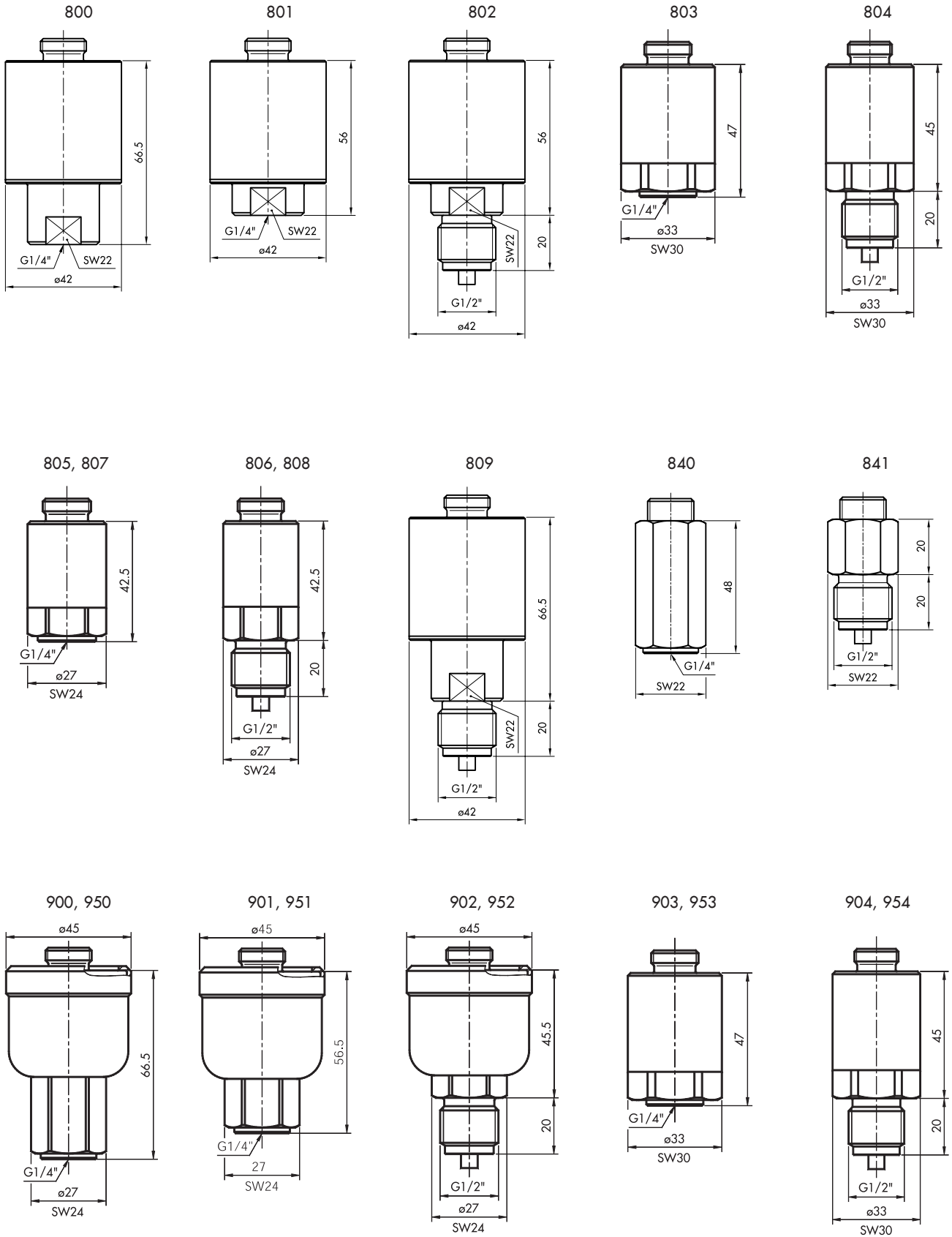
Bereich Plage Range [bar]	Überdruck Surpression Overpressure [bar]									
					G1/4"	G1/8"	G3/8"	G1/2"	7/16"-20UNF	5/8"-18UNF
					innen femelle female	innen femelle female	aussen mâle male	aussen mâle male	aussen mâle male	aussen mâle male
72	-0.9...	1.5	10	A	900 <sup>1)</sup>		910	909		
				B	950 <sup>1)</sup>			959		
				C	800 <sup>1)</sup>			809		
73	0.2...	1.6	10	A	901 <sup>1)</sup>	921 <sup>1)</sup>	922 <sup>1)</sup>	902 <sup>1)</sup>	911 <sup>1)</sup>	912 <sup>1)</sup>
75	0.2...	2.5	10	B	951 <sup>1)</sup>			952 <sup>1)</sup>	961 <sup>1)</sup>	
				C	801 <sup>1)</sup>			802		
76	0.0...	4.0	12	A	903 <sup>1)</sup>	923 <sup>1)</sup>	924 <sup>1)</sup>	904 <sup>1)</sup>	913 <sup>1)</sup>	914 <sup>1)</sup>
77	0.0...	6.0	12	B	953 <sup>1)</sup>	973 <sup>1)</sup>	974 <sup>1)</sup>	954 <sup>1)</sup>	963 <sup>1)</sup>	964 <sup>1)</sup>
				C	803 <sup>1)</sup>	823 <sup>1)</sup>		804		
78	1.0...	10.0	24	A	905 <sup>1)</sup>	925 <sup>1)</sup>	926 <sup>1)</sup>	906 <sup>1)</sup>	915 <sup>1)</sup>	916 <sup>1)</sup>
79	1.0...	16.0	24	B	955 <sup>1)</sup>	975 <sup>1)</sup>	976 <sup>1)</sup>	956 <sup>1)</sup>	965 <sup>1)</sup>	966 <sup>1)</sup>
				C	805 <sup>1)</sup>			806		
80	2.0...	25.0	40	A	907 <sup>1)</sup>	927 <sup>1)</sup>	928 <sup>1)</sup>	908 <sup>1)</sup>	917 <sup>1)</sup>	918 <sup>1)</sup>
81	4.0...	40.0	40	B	957 <sup>1)</sup>	977 <sup>1)</sup>	978 <sup>1)</sup>	958 <sup>1)</sup>	967 <sup>1)</sup>	968 <sup>1)</sup>
				C	807 <sup>1)</sup>			808		
82	6.0...	60.0	100					941		
83	10.0...	100.0	100					841		

- A Balg: Bronze  
Gehäuse: Messing
- B Balg: Bronze  
Gehäuse: Messing chem. vern.
- C Balg: 1.4435  
Medienberührende Teile: 1.4435  
Gehäuse: MS vernickelt
- Soufflet: bronze  
Boîtier: laiton
- Soufflet: bronze  
Boîtier: laiton chim. nickelé
- Soufflet: 1.4435  
Matériel contact. avec médias: 1.4435  
Boîtier: laiton nickelé
- Bellows: bronze  
Housing: brass
- Bellows: bronze  
Housing: brass chem. nickel plat.
- Bellows: 1.4435  
Medium contact. parts: 1.4435  
Housing: brass, nickel plat.

<sup>1)</sup> Kann „für Sauerstoffanwendungen gereinigt“ hergestellt werden, mit Zubehör **XXX.93**  
 On peut fabriquer „nettoyé pour applications avec l'oxygène“, avec accessoires **XXX.93**  
 Can be manufactured „cleaned for oxygen applications“, with accessories **XXX.93**  
 K ]bbYf'5i lca UHjW9ei Jda Ybh7C "z4B "Tel +, \* +) , \*%+(\$+\$, Fax +, \* +) , \*%+(\$+\$, www.k b!Ui ltc.com

ÄNDERUNGEN VORBEHALTEN - SOUS RÉSERVE DE MODIFICATIONS - SUBJECT TO CHANGE

**MASSBILDER / COTES D'ENCOMBREMENT / DIMENSIONS**

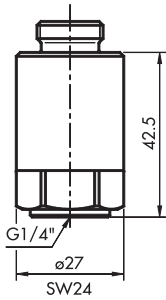


K jbbYf'5i lca UHjW9ei Jda Ybh7C "z4B Tel +, \* +), \*%+(\$+\$, Fax +, \* +), \*%+(\$+\$, www.k b!Ui ltc.com

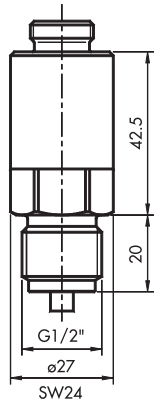
ÄNDERUNGEN VORBEHALTEN - SOUS RÉSERVE DE MODIFICATIONS - SUBJECT TO CHANGE

**MASSBILDER / COTES D'ENCOMBREMENT / DIMENSIONS**

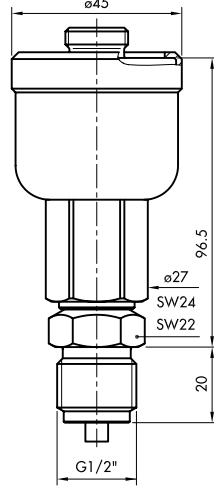
905, 907, 955, 957



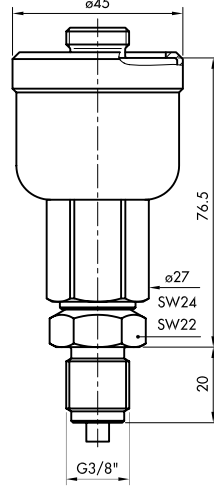
906, 908, 956, 958



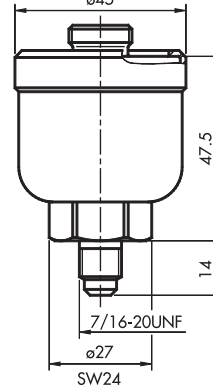
909, 959



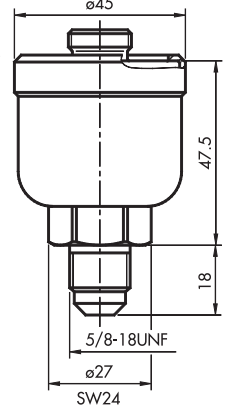
910, 960



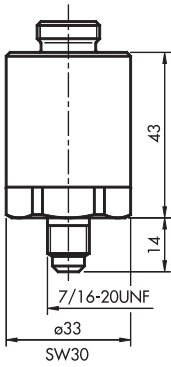
911, 961



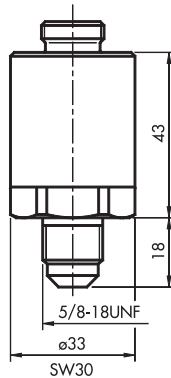
912, 962



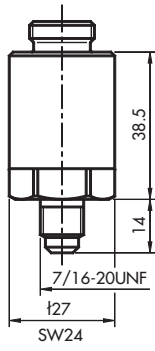
913, 963



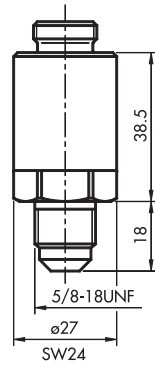
914, 964



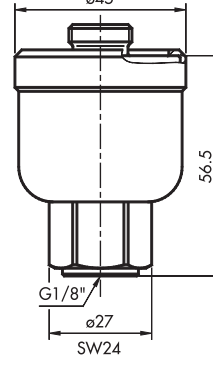
915, 917, 965, 967



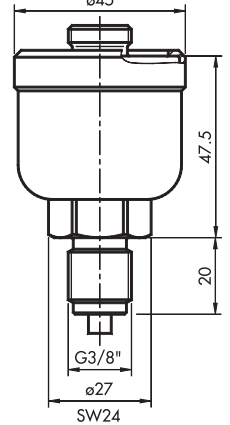
916, 918, 966, 968



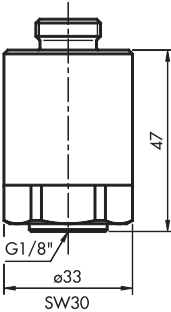
921, 971



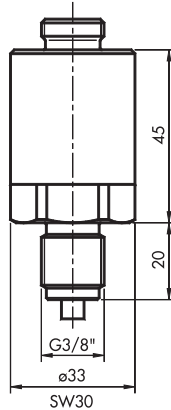
922, 972



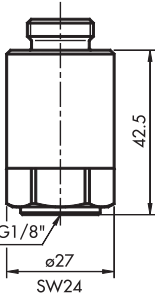
923



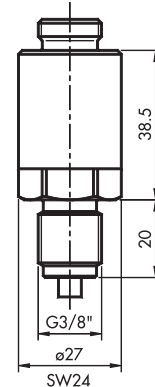
924



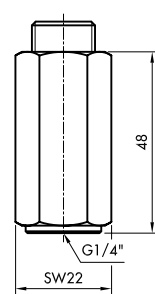
925, 927, 975, 977



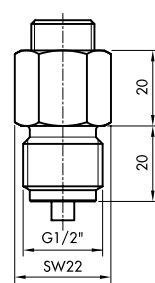
926, 928, 976, 978



940



941



K 1bbYf 5i tca UHw9ei jda Ybh7C "z0B Tel +, \* +) , \*%+( \$+\$, Fax +, \* +) , \*%+( \$+\$, www.k.b!Ui t.c.com

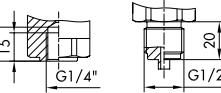
ÄNDERUNGEN VORBEHALTEN - SOUS RÉSERVE DE MODIFICATIONS - SUBJECT TO CHANGE



Bereich  
Plage  
Range [bar]

Überdruck  
Surpression  
Overpressure [bar]

Belg und medienberührende  
Teile: 1.4435  
Gehäuse: MS vernickelt  
Soufflet et matériel contact.  
avec médias: 1.4435  
Boîtier: laiton nickelé  
Bellows and medium contact.  
parts: 1.4435  
Housing: brass, nickel plat.



G1/4"

G1/2"

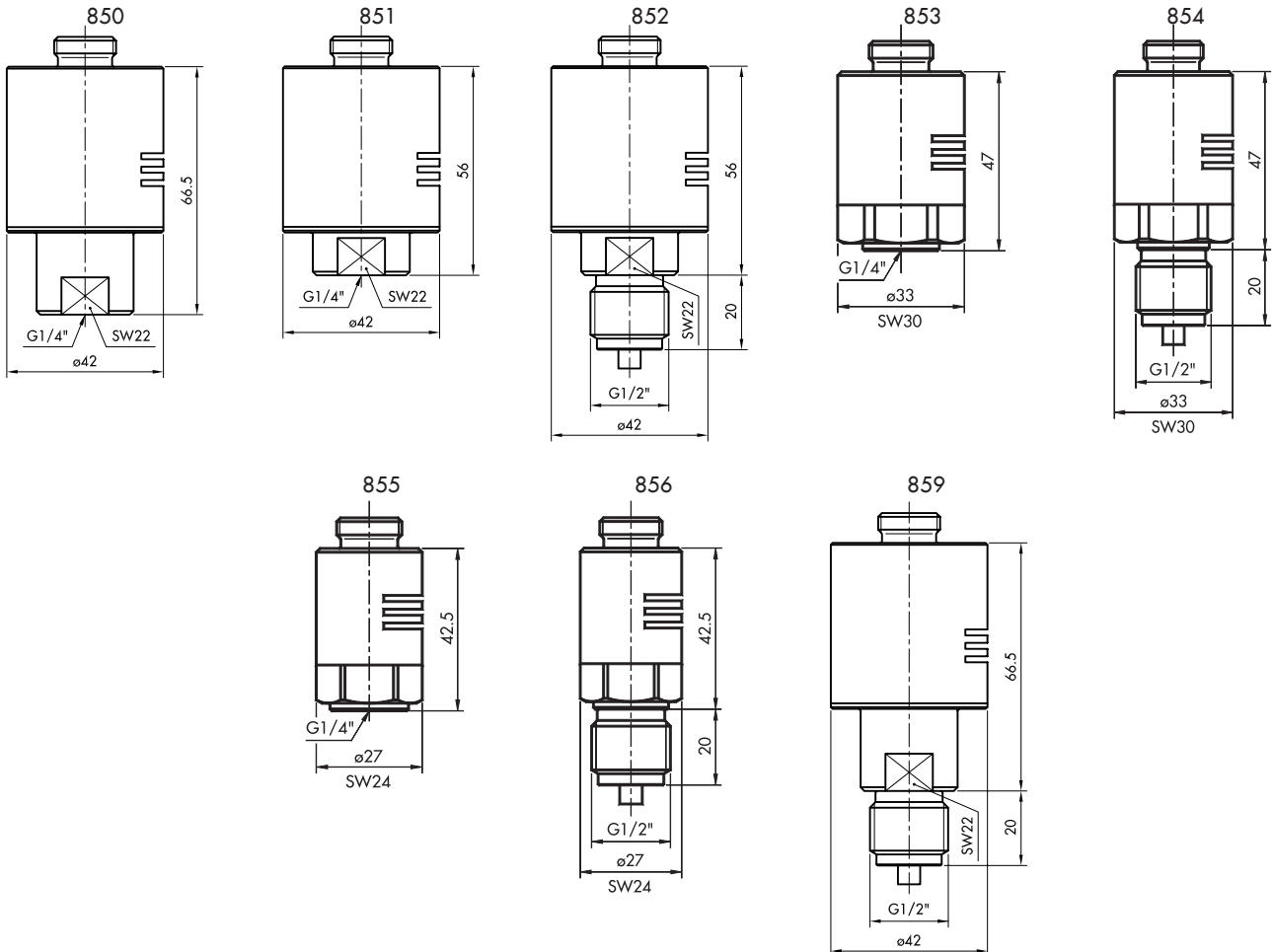
innen  
femelle  
female

aussen  
mâle  
male

	Bereich Plage Range [bar]	Überdruck Surpression Overpressure [bar]			
72	-0.9...	1.5	10	•	850 <sup>1)</sup> 859
73	0.2...	1.6	10	•	851 <sup>1)</sup> 852
75	0.2...	2.5	10	•	851 <sup>1)</sup> 852
76	0.0...	4.0	12	•	853 <sup>1)</sup> 854
77	0.0...	6.0	12	•	853 <sup>1)</sup> 854
78	1.0...	10.0	24	•	855 <sup>1)</sup> 856
79	1.0...	16.0	24	•	855 <sup>1)</sup> 856
80	2.0...	25.0	40	•	857 <sup>1)</sup> 858
81	4.0...	40.0	40	•	857 <sup>1)</sup> 858

<sup>1)</sup> Kann „für Sauerstoffanwendungen gereinigt“ hergestellt werden, mit Zubehör XXX.93  
On peut fabriquer „nettoyer pour applications avec l'oxygène“, avec accessoires XXX.93  
Can be manufactured „cleaned for oxygen applications“, with accessories XXX.93

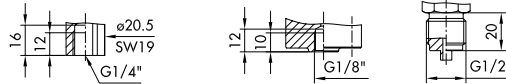
**MASSBILDER / COTES D'ENCOMBREMENT / DIMENSIONS**



K [bbYf'5i Itca UH]W9ei Jda Ybh7C "z4B ... Tel +, \* +), \*%+(\$+\$, Fax +, \* +), \*%+(\$+\$, www.k b!Ui Itc.com

ÄNDERUNGEN VORBEHALTEN - SOUS RÉSERVE DE MODIFICATIONS - SUBJECT TO CHANGE

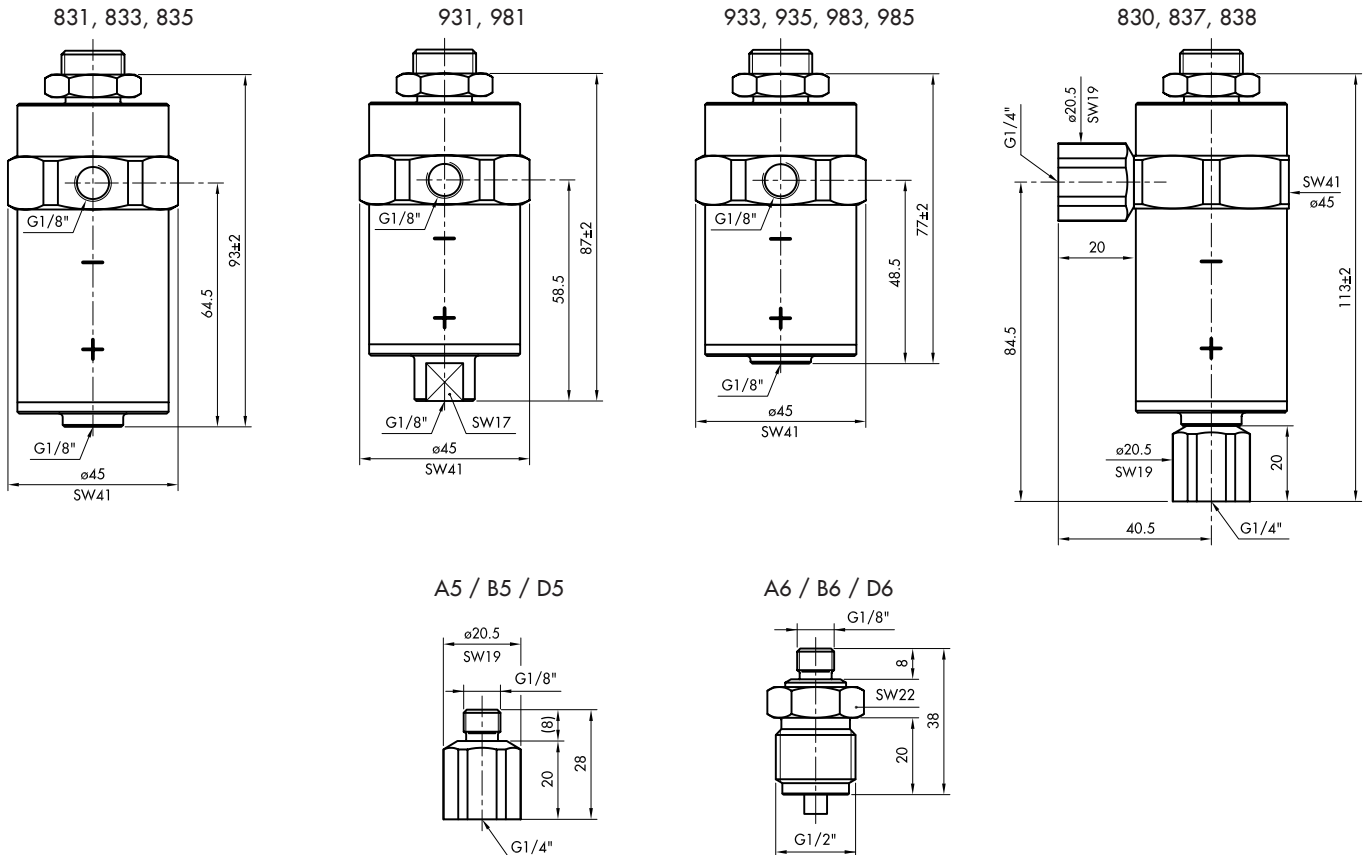
**FÜR DIFFERENZDRUCKSCHALTER / POUR INTERRUPTEUR À PRESSION DIFFÉRENTIELLE /  
FOR DIFFERENTIAL PRESSURE SWITCH: 920, 924, 932**



Bereich Plage Range [bar]	Überdruck Surpression Overpressure [bar]				G1/4"		G1/8"		G1/2"	
					innen femelle female	innen femelle female	cussen mâle male			
74	-0.6... 3.4	10	A		<b>930</b>	(931+2x A5)	<b>931</b>	<b>932</b>	(931+2x A6)	
				B	<b>980</b>	(981+2x B5)	<b>981</b>	<b>982</b>	(981+2x B6)	
				C	<b>830</b>	(831+2x D5)	<b>831</b>	<b>832</b>	(831+2x D6)	
76	0.0... 4.0	12	A		<b>937</b>	(833+2x A5)	<b>933</b>	<b>934</b>	(933+2x A6)	
				B	<b>987</b>	(953+2x B5)	<b>983</b>	<b>984</b>	(983+2x B6)	
77	0.0... 6.0	12	A		<b>837</b>	(833+2x D5)	<b>833</b>	<b>834</b>	(833+2x D6)	
				B						
				C						
78	1.0... 10.0	24	A		<b>938</b>	(935+2x A5)	<b>935</b>	<b>936</b>	(935+2x A6)	
				B	<b>988</b>	(985+2x B5)	<b>985</b>	<b>986</b>	(985+2x B6)	
79	1.0... 16.0	24	A		<b>838</b>	(835+2x D5)	<b>835</b>	<b>836</b>	(835+2x D6)	
				B						
				C						

- A** Balg: Bronze  
Gehäuse: Messing  
Soufflet: bronze  
Boîtier: laiton  
Bellows: bronze  
Housing: brass
- B** Balg: Bronze  
Gehäuse: Messing chem. vern.  
Soufflet: bronze  
Boîtier: laiton chim. nickelé  
Bellows: bronze  
Housing: brass chem. nickel plat.
- C** Balg: 1.4435  
Medienberührende Teile: 1.4435  
Gehäuse: MS vernickelt  
Soufflet: 1.4435  
Matériel contact. avec médias: 1.4435  
Boîtier: laiton nickelé  
Bellows: 1.4435  
Medium contact. parts: 1.4435  
Housing: brass, nickel plat.

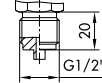
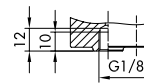
**MASSBILDER / COTES D'ENCOMBREMENT / DIMENSIONS**



K jbbYf'5i lca UHjW9ei Jda Ybh7C "z4B "Tel +, \* +) , \*%+( \$+\$, Fax +, \* +) , \*%+( \$+\$, www.k b!Ui ltc.com

ÄNDERUNGEN VORBEHALTEN - SOUS RÉSERVE DE MODIFICATIONS - SUBJECT TO CHANGE

**FÜR EX DIFFERENZDRUCKSCHALTER / POUR INTERRUPTEUR À PRESSION DIFFÉRENTIELLE EX /  
FOR EX DIFFERENTIAL PRESSURE SWITCH: 920, 924, 932**



Nenndruck Plage Range [bar]	Überdruck Surpression Overpressure [bar]		G1/4"			G1/8"		G1/2"	
			A	B	C	innen femelle female	innen femelle female	ausen mâle male	
72	-0.6... 3.4	10	A	B	C	942 + 2x A5 992 + 2x B5 881 + 2x D5	942 992 881	942 + 2x A6 992 + 2x B6 881 + 2x D6	
76	0.0... 4.0	12	A	B	C	943 + 2x A5 993 + 2x B5 883 + 2x D5	943 993 883	943 + 2x A6 993 + 2x B6 883 + 2x D6	
77	0.0... 6.0	12							
78	1.0... 10.0	24	A	B	C	944 + 2x A5 994 + 2x B5 885 + 2x D5	944 994 885	944 + 2x A6 994 + 2x B6 885 + 2x D6	
79	1.0... 16.0	24							

**A** Balg: Bronze  
Gehäuse: Messing

Soufflet: bronze  
Boîtier: laiton

Bellows: bronze  
Housing: brass

**B** Balg: Bronze  
Gehäuse: Messing chem. vern.

Soufflet: bronze  
Boîtier: laiton chim. nickelé

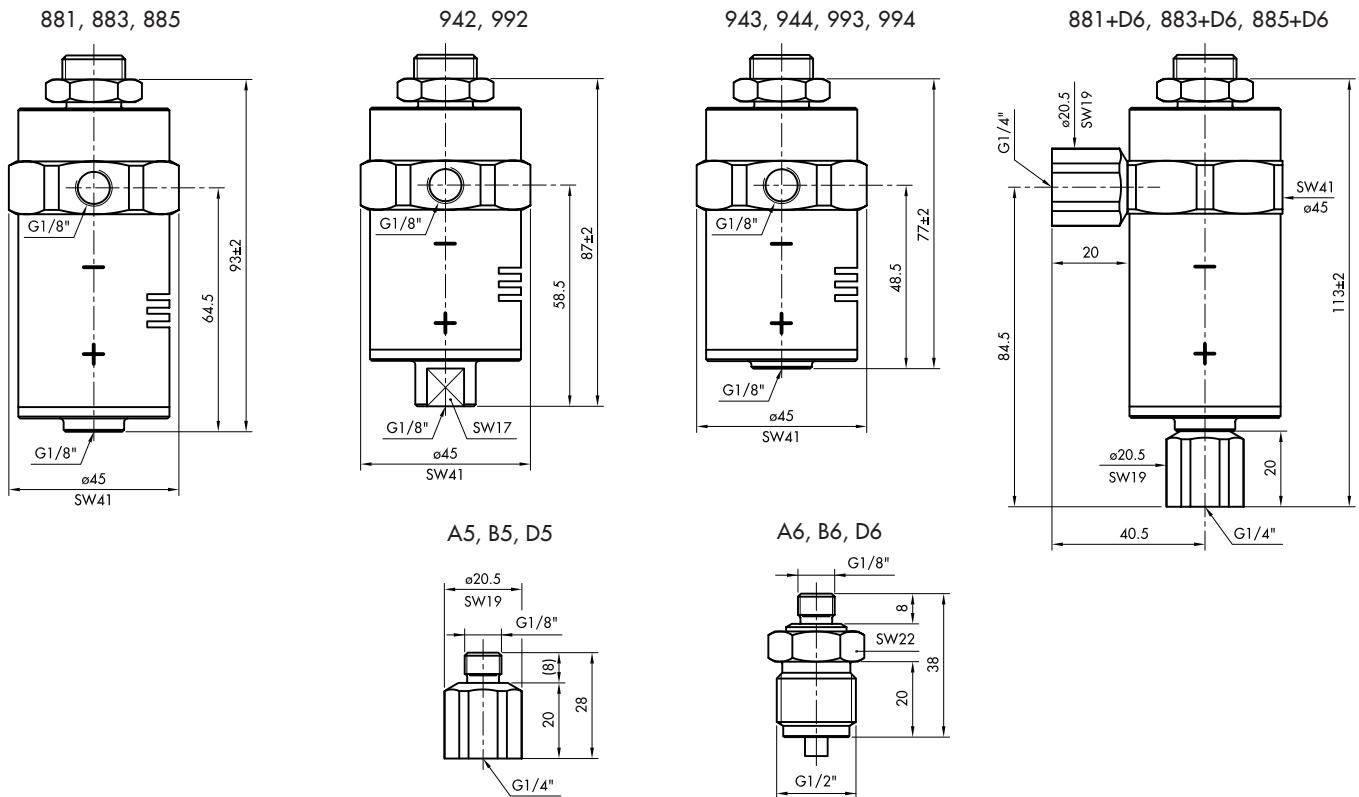
Bellows: bronze  
Housing: brass chem. nickel plat.

**C** Balg: 1.4435  
Medienberührende Teile: 1.4435  
Gehäuse: MS vernickelt

Soufflet: 1.4435  
Matériel contact. avec médias: 1.4435  
Boîtier: laiton nickelé

Bellows: 1.4435  
Medium contact. parts: 1.4435  
Housing: brass, nickel plat.

**MASSBILDER / COTES D'ENCOMBREMENT / DIMENSIONS**



**i** Trafag entwickelt und produziert auch speziell auf Ihre Bedürfnisse zugeschnittene Produkte. Bitte fragen Sie uns an.  
Trafag développe et fabrique des produits adaptés à vos besoins spécifiques en se basant sur votre cahier des charges. Contactez-nous s.v.p.  
Trafag develops and manufactures customer-engineered products according to your specifications to meet your requirements. Please contact us.

K jbbYf'5i lca UHWei Jda Ybh7C "z4B ... Tel +, \* +), \*%+(\$+\$, Fax +, \* +), \*%+(\$+\$, www.k b!Ui ltc.com

ÄNDERUNGEN VORBEHALTEN - SOUS RÉSERVE DE MODIFICATIONS - SUBJECT TO CHANGE