

Remote Control Emulation Software

Type 2887A

for RoaDyn® Measuring Wheel System 2000

The RoaDyn Remote Control Emulation Software Type 2887A supersedes the remote control Type 5685A2 used in combination with the On-board Electronics System 2000 Type 9891A....

- Simplified handling during road tests
- Completely supersedes the remote control hardware Type 5685A2
- Data acquisition and settings via laptop

Description

The RoaDyn Remote Control Emulation Software Type 2887A completely supersedes the remote control hardware Type 5685A2, including mouse emulation of the integrated touch-pad on laptops. Communication goes via a serial interface. Dispensing with the remote control hardware simplifies handling of the measuring system, since data acquisition and all settings can be made via a laptop or PC. A visual image of the remote control appears on the computer monitor. Use of the remote control emulation software does not exclude an alternative use of the hardware remote control, as neither software nor connector need be changed. A special cable Type 1700A101Q2 is also supplied for the connection to the on-board electronics. The connecting cable for the remote control Type 5685A2 must not be used.

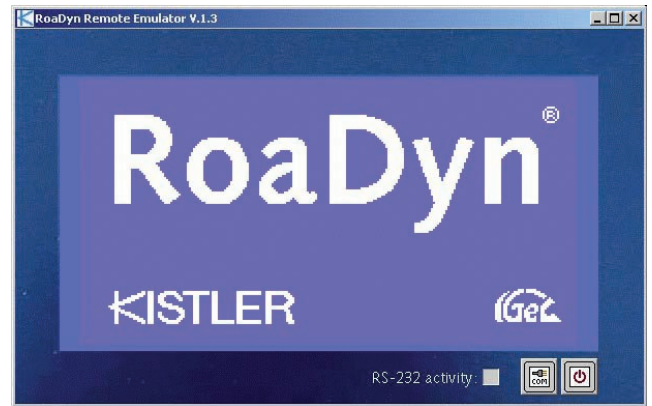


Fig. 1: Remote control emulation window on the monitor screen

Application

The remote control emulation software is used in on-road tests together with RoaDyn measuring wheel systems P6xy, S6xy, V6xy in combination with the on-board electronic system 2000.

Technical Data

Computer recommendation

Software requirement	Windows®	98, NT, 2000, XP
Storage space		1 MB
RAM memory		min. 256 MB
Interface	Parallel port	EPP

Windows® is a registered trademark of Microsoft Corporation.

Included Accessories

- Serial connecting cable

Type/Art. No.

1700A101Q2

Optional Accessories

- None

Ordering Code

- RoaDyn® Remote Control Emulation Software System 2000

Type 2887A

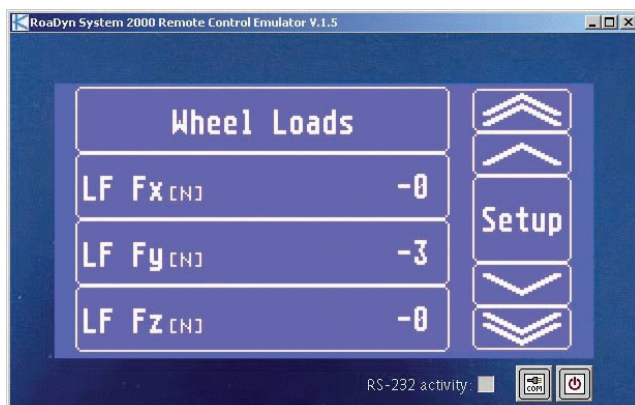


Fig. 2: Entry-level window of the RoaDyn® Remote Control Emulation Software

2887A_000-588e-06.07