

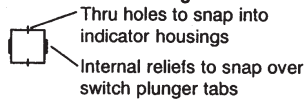
# AML Pushbutton Legend Sheet/Product Specification

Account NO 126 - 284

### LEGEND ORDER GUIDE

Button: Type Orientation	Figure NO	Max Lines/Area					Button Filler	Max Characters/Line				
		5/64	7/64	9/64	13/64	5/16		5/64	7/64	9/64	13/64	5/16
AREA 1  A+B P,R	1	4 *3	3 *2	3 *2	2 *1	1 *1		7 *5	5 *4	5 *3	3 *2	1 *1
AREA 1  C	2	4 3	3 2	3 2	2 1	1 1		7 5	5 4	5 3	3 2	1 1
AREA 1  D	3	1 1	1 1	1 1	0 0	0 0		7 5	5 4	5 3	0 0	0 0
AREA 1  E,H*	4	4 *3	3 *2	3 *2	2 *1	1 *1		11 *10	9 *8	8 *7	5 *5	3 *3
AREA 1  E,H*	5	6 *6	4 *4	4 *4	3 *3	2 *2		7 *5	5 *4	5 *3	3 *2	1 *1
AREA 1  F	6	4 3	3 2	3 2	2 1	1 1		11 10	9 8	8 7	5 5	3 3
AREA 1  F	7	6 6	4 4	4 4	3 3	2 2		7 5	5 4	5 3	3 2	1 1
AREA 1  G,N	8	1 1	1 1	1 1	0 0	0 0		11 10	9 8	8 7	0 0	0 0
AREA 1  M	9	5 0	4 0	3 0	2 0	1 0		8 0	6 0	6 0	3 0	1 0

#### Definitions of Markings



#### Standard Legend Placement -

- Use special legends sec. for other placements
1. Transmitted Color - Legend on outer shell (Button)
  2. Dead Front - Legend on Insert
  3. Projected Color - Legend on outer shell (Button)
  4. Transmitted color with clear cap legend on insert

### LEGEND ORDER CHART

Customer Part No	Fig No	Type Size					Ink Color		But-ton Qty	AREA	1st Line	2nd Line	3rd Line	4th Line	5th Line	6th Line
		5/64	7/64	9/64	13/64	5/16	Black	White								

Catalog Listing <b>AML51 -</b>		
Customer P.O. No.		Customer Dwg. No.
MICRO SWITCH Sales Order	Line Number	Schedule No.

Customer: \_\_\_\_\_

Address: \_\_\_\_\_ (city) \_\_\_\_\_ (state)

#### Instructions

1. Fill in appropriate catalog listing - one listing/sheet.
2. Check proper figure #. Type size, Type color.
3. Fill in quantity required.
4. Indicate legends desired - Do not exceed maximums shown in legend order guide.

#### Note

1. For Proper Legend Orientation, AML housings (when viewed from front of panel) should have "MICRO SWITCH" logo oriented "UP" on square devices and "UP" or to the "LEFT" on rectangular devices.
2. Please use black ink in filling out this form to help us process your order.
3. \* INSERT ONLY ON STYLE A & H BUTTON

Modified Gothic lettering (A thru Z), numerals (0 thru 9) and Symbols below available in 5/64, 7/64, 9/64, 13/64 and 5/16.	<b>A3</b> Modified Gothic
STANDARD SYMBOLS AVAILABLE	
. , : ; ! ? ' _ " / ( ) * &	
\$ % # % ° + - ± ÷ x = ≠ > <	
→ ↑ ↓ ← C <sub>R</sub> 1/4 1/2 3/4 1/3 2/3 @ ∞	

#### SPECIAL LEGENDS

NOTE: Use this area to show special Legend Locations or Configurations NOT shown to the left. NON-STANDARD legends will involve additional charges and increased delivery time.

Fig. "A"

Fig. "B"

Sheet prepared by: \_\_\_\_\_

(Signature) \_\_\_\_\_

(Date) \_\_\_\_\_

# AML Lens Legend Sheet/Product Specification

Page \_\_\_\_ of \_\_\_\_

Account No \_\_\_\_\_

## LEGEND ORDER GUIDE

Button: Type Orientation	Figure No	Max Lines					Button Filter	Max Characters				
		5/64	7/64	9/64	13/64	5/16		5/64	7/64	9/64	13/64	5/16
AREA 1 J	1	4	3	3	2	1	14	11	10	7	3	
AREA 1 2 K	2	4	3	3	2	1	6	6	6	3	1	
AREA 1 2 3 L	3	4	3	3	2	1	4	3	3	2	1	
AREA 1 J	4	4	3	3	3	2	9	7	7	4	2	
AREA 1 2 K	5	3	2	2	1	1	8	7	7	4	2	
AREA 1 2 3 L	6	2	1	1	1	0	8	7	7	4	0	

### Standard Legend Placement

1. Transmitted Color — Legend on outer shell (Button)
2. Dead Front - Legend on Insert
3. Projected Color - Legend on outer shell (Button)

## LEGEND ORDER CHART

Customer Part No	Fig No	Type Size					Ink Color		But- ton Qty	AREA	Legend Description			
		5/64	7/64	9/64	13/64	5/16	Black	White			Sequence: Left-to-Right or Top-to-Bottom			
										1st Line	2nd Line	3rd Line	4th Line	
										1				
										2				
										3				
										1				
										2				
										3				
										1				
										2				
										3				
										1				
										2				
										3				

Catalog Listing <b>AML51 -</b>		
Customer P.O. No.	Customer Dwg. No.	
MICRO SWITCH Sales Order	Line Number	Schedule No.

Customer: \_\_\_\_\_  
 Address: \_\_\_\_\_ (city) \_\_\_\_\_ (state)

### Instructions

1. Fill in appropriate catalog listing - one listing/sheet.
2. Check proper figure #. Type size, type color.
3. Fill in quantity required.
4. Indicate legends desired — Do not exceed maximums shown in legend order guide.

### Note

1. For Proper Legend Orientation, AML housings (when viewed from front of panel) should have "MICRO SWITCH" logo oriented "UP" on square devices and "UP" or to the "LEFT" on rectangular devices.
2. Please use black ink in filling out this form to help us process your order.

Modified Gothic lettering (A thru Z), numerals (0 thru 9) and Symbols below available in 5/64, 7/64, 9/64, 13/64 and 5/16.	<b>A3</b> Modified Gothic
. , : ; ! ? ' _ " / ( ) * &	
\$ ¢ # % ° + - ± ÷ x = ≠ > <	
→ ↑ ↓ ← C R 1/4 1/2 3/4 1/3 2/3 @ ∞	

### SPECIAL LEGENDS

NOTE: Use this area to show special Legend Locations or Configurations NOT shown above. NON-STANDARD legends will involve additional charges and increased delivery time.

--	--