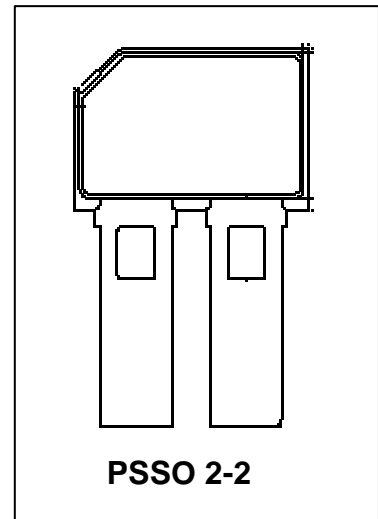


Differential Two-Wire Hall Effect Sensor IC

TLE 4941
TLE 4941 C

Features

- Two-wire current interface
- Dynamic self-calibration principle
- Single chip solution
- No external components needed
- High sensitivity
- South and north pole pre-induction possible
- High resistance to piezo effects
- Large operating air-gaps
- Wide operating temperature range
- TLE 4941C: 1.8nF overmolded capacitor



Type	Marking	Ordering Code	Package
TLE 4941	4100E	Q62705-K427	P-SSO-2-1
TLE 4941 C	41C0E	Q62705-K439	P-SSO-2-2

The Hall Effect sensor IC TLE 4941 is designed to provide information about rotational speed to modern vehicle dynamics control systems and ABS. The output has been designed as a two wire current interface. The sensor operates without external components and combines a fast power-up time with a low cut-off frequency. Excellent accuracy and sensitivity is specified for harsh automotive requirements as a wide temperature range, high ESD and EMC robustness. State-of-the art BiCMOS technology is used for monolithic integration of the active sensor areas and the signal conditioning circuitry.

The TLE 4941 C is additionally provided with an overmolded 1.8nF capacitor for improved EMI performance.

Functional Description

The differential hall sensor IC detects the motion of ferromagnetic and permanent magnet structures by measuring the differential flux density of the magnetic field. To detect the motion of ferromagnetic objects the magnetic field must be provided by a back biasing permanent magnet. Either south or north pole of the magnet can be attached to the rear unmarked side of the IC package.

Magnetic offsets of up to +/- 20mT and device offsets are cancelled by a self-calibration algorithm. Only a few transitions are necessary for self-calibration. After the initial calibration sequence switching occurs when the input signal is crossing the arithmetic mean of its max and min value. (E.g. zero-crossing for sinusoidal signals)

The ON and OFF state of the IC are indicated by **High** and **Low** current consumption.

Circuit Description

The circuit is supplied internally by a 3V voltage regulator. An on-chip oscillator serves as clock generator for the digital part of the circuit.

TLE 4941 signal path is comprised of a pair of hall probes, spaced at 2.5mm, a differential amplifier including a noise-limiting low-pass filter and a comparator feeding a switched current output stage. In addition an offset cancellation feedback loop is provided by a signal-tracking A/D converter, a digital signal processor (DSP) and an offset cancellation D/A converter.

During the startup phase (un-calibrated mode) the output is disabled ($I=I_{Low}$).

The differential input signal is digitized in the speed A/D converter and fed into the DSP. The minimum and maximum values of the input signal are extracted and their corresponding arithmetic mean value is calculated. The offset of this mean value is determined and fed into the offset cancellation DAC.

After successful correction of the offset, the output switching is enabled.

In running mode (calibrated mode) the offset correction algorithm of the DSP is switched into a low-jitter mode, avoiding oscillation of the offset DAC LSB. Switching occurs at zero-crossing. It is only affected by the (small) remaining offset of the comparator and by the remaining propagation delay time of the signal path, mainly determined by the noise-limiting filter. Signals below a defined threshold ΔB_{Limit} are not detected to avoid unwanted parasitic switching.

Pin Configuration

(view on branded side of component)

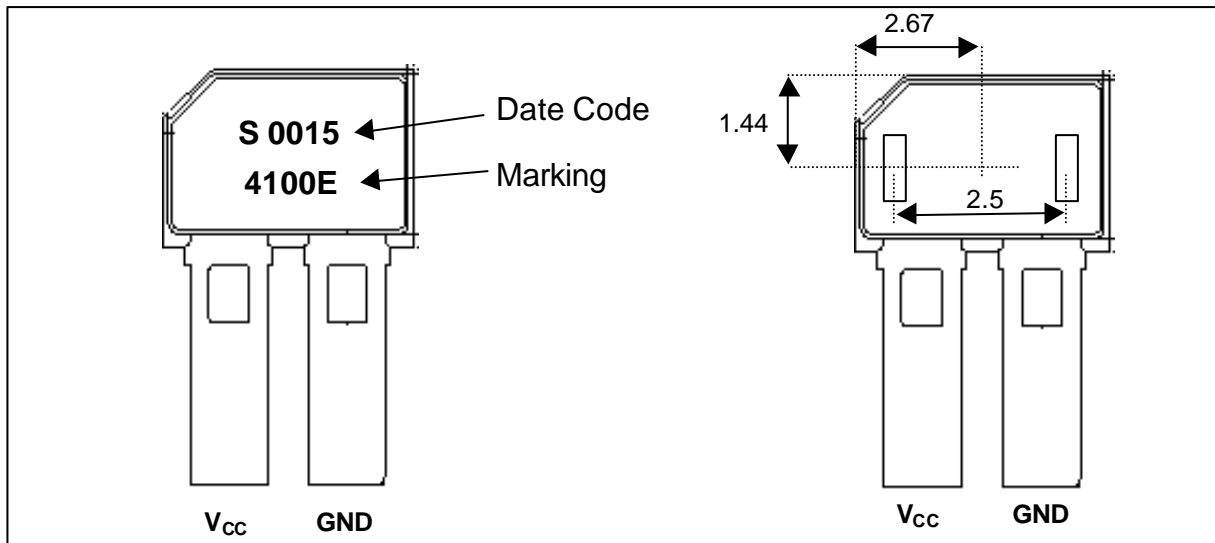


Figure 1

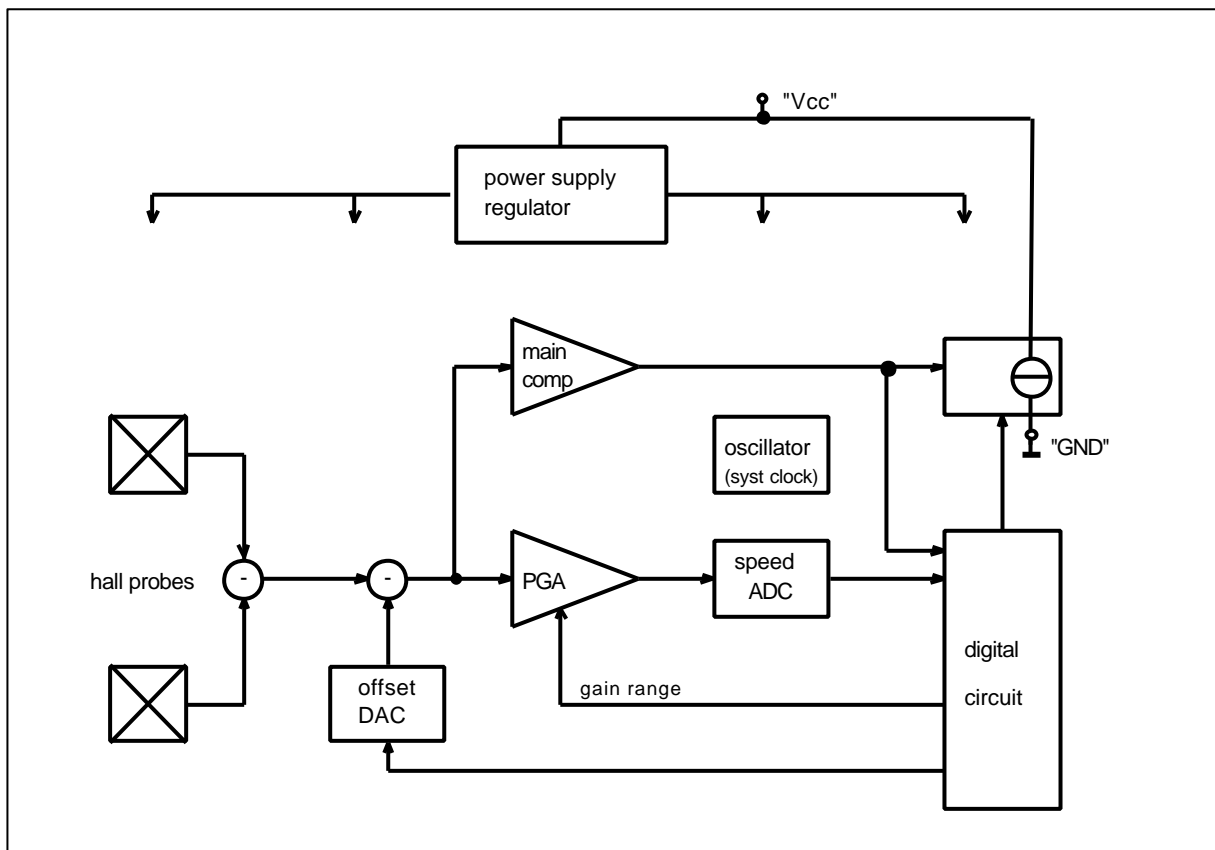


Figure 2 Block diagram

Absolute Maximum Ratings

$T_j = -40$ to 150°C , $4.5\text{V} \leq V_{\text{CC}} \leq 16.5\text{V}$

Parameter	Symbol	Limit values		Unit	Remarks
		Min	Max		
Supply voltage	V_{CC}	-0.3			$T_j < 80^\circ\text{C}$
Supply voltage	V_{CC}		16.5	V	$T_j = 170^\circ\text{C}$
Supply voltage	V_{CC}		20	V	$T_j = 150^\circ\text{C}$
Supply voltage	V_{CC}		22	V	$t = 10 * 5 \text{ min}$
Supply voltage	V_{CC}		24	V	$t = 10 * 5 \text{ min}$, $R_M=75\Omega$
Supply voltage	V_{CC}		27	V	$t = 400 \text{ ms}$, $R_M=75\Omega$
Reverse polarity current	I_{rev}		200	mA	External current limitation required, $t < 4\text{h}$
Junction temperature	T_j		150	$^\circ\text{C}$	5000 h, $V_{\text{CC}} < 16.5\text{V}$
Junction temperature	T_j		160	$^\circ\text{C}$	2500 h, $V_{\text{CC}} < 16.5\text{V}$
Junction temperature	T_j		170	$^\circ\text{C}$	500 h, $V_{\text{CC}} < 16.5\text{V}$
Junction temperature	T_j		190	$^\circ\text{C}$	4 h, $V_{\text{CC}} < 16.5\text{V}$
Active lifetime	$t_{\text{B,active}}$	10000		h	
Storage Temperature	T_s	-40	150	$^\circ\text{C}$	
Thermal Resistance P-SSO-2-1	R_{thJA}		190	K/W	1)
ESD	U_{ESD}		± 2	kV	According to standard EIA/JESD22-A114-B HBM ²⁾ $R=1500 \Omega$, $C=100\text{pF}$

1) can be improved significantly by further processing like overmolding

2) covers MIL STD 883D

Note: Stresses in excess of those listed here may cause permanent damage to the device. Exposure to absolute maximum rating conditions for extended periods may affect device reliability.

Operating Range

Parameter	Symbol	Limit values		Unit	Remarks
		Min	Max		
Supply voltage	V_{CC}	4.5	20	V	
Supply voltage ripple	V_{AC}		6	V_{pp}	$V_{CC}=13V$ $0 < f < 50kHz$
Junction temperature	T_j	-40	150	°C	
Junction temperature	T_j		170	°C	$V_{CC} \leq 16.5V$, increased jitter permissible
Pre-induction	B_0	-500	+500	mT	
Pre-induction offset between outer probes	$\Delta B_{stat., Vr}$	-20	+20	mT	
Differential Induction	ΔB	-120	+120	mT	

Note: Within the operating range the functions given in the circuit description are fulfilled.

AC/DC Characteristics

All values specified at constant amplitude and offset of input signal

Parameter	Symbol	Limit values			Unit	Remarks
		Min	Typ	Max		
Supply current	I_{Low}	5.9	7	8.4	mA	
Supply current	I_{High}	11.8	14	16.8	mA	
Supply current ratio	I_{High}/I_{Low}	1.9				
Output rise/fall slew rate TLE 4941	t_r, t_f	12		26	mA/ μ s	$R_M \leq 150 \Omega$
		7.5		24		$R_M \leq 750 \Omega$ See Figure 4.
Output rise/fall slew rate TLE 4941 C	t_r, t_f	8		22	mA/ μ s	$R_M = 75 \Omega$ $T < 125^\circ C$
		8		26		$T < 170^\circ C$ See Figure 4.
Current ripple dI_x/dV_{CC}	I_x			90	$\mu A/V$	
Limit threshold	ΔB_{Limit}	0.35	0.8	1.5	mT	
Initial calibration delay time	$t_{d,input}$			300	μ s	Additional to n_{start}
Magnetic edges required for initial calibration ¹⁾	n_{start}		3	6 *	magn. edges	
Frequency	f	1		2500	Hz	
Frequency changes	df/dt			± 100	Hz/ms	
Duty cycle	duty	40	50	60	%	²⁾ Measured @ $\Delta B = 2mT$ sine wave Def. Figure 4
Jitter, $T_j < 150^\circ C$ $T_j < 170^\circ C$	$S_{Jit-close}$			± 2	%	1 s value $V_{CC} = 12 V$ $?B \geq 2mT$
				± 3	%	
Jitter, $T_j < 150^\circ C$ $T_j < 170^\circ C$	$S_{Jit-far}$			± 4	%	1 s value $V_{CC} = 12 V$ ($2mT \geq$) $\Delta B >$ ΔB_{Limit}
				± 6	%	
Jitter at board net ripple	S_{Jit-AC}			± 2	%	$V_{CC} = 13V \pm 6V_{pp}$ $0 < f < 50kHz$ $\Delta B = 15 mT$

* See appendix B

¹⁾ The sensor requires up to n_{start} magnetic switching edges for valid speed information after power-up or after a stand still condition. During that phase the output is disabled.

²⁾ During fast offset alterations, due to the calibration algorithm, exceeding the specified duty cycle is permitted for short time periods.

Output Description

Under ideal conditions, the output shows a duty cycle of 50 %. Under real conditions, the duty cycle is determined by the mechanical dimensions of the target wheel and its tolerances. (40% to 60% might be exceeded for pitch >> 5mm due to the zero-crossing principle.)

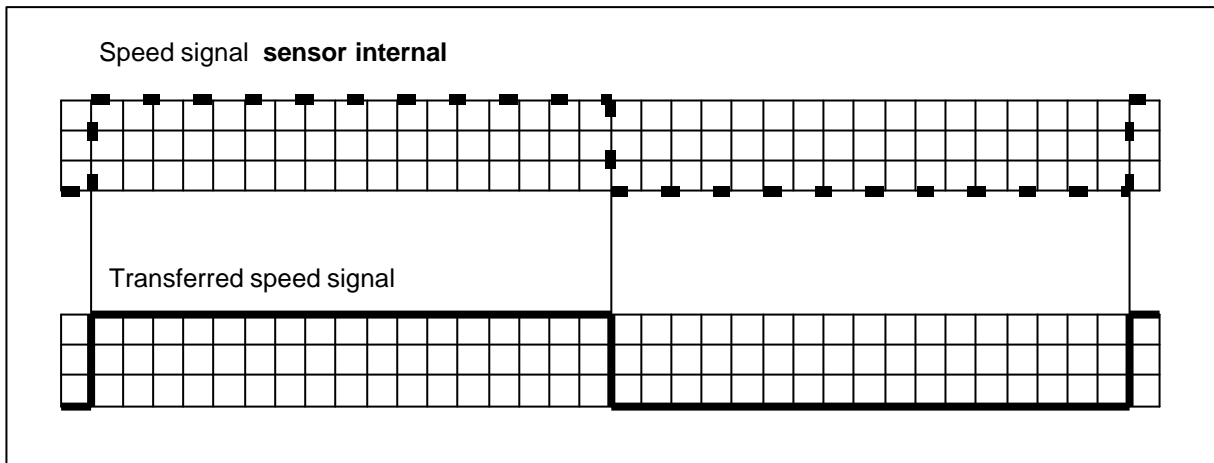


Figure 3 Speed Signal (half a period = $0.5 * 1/f_{\text{speed}}$)

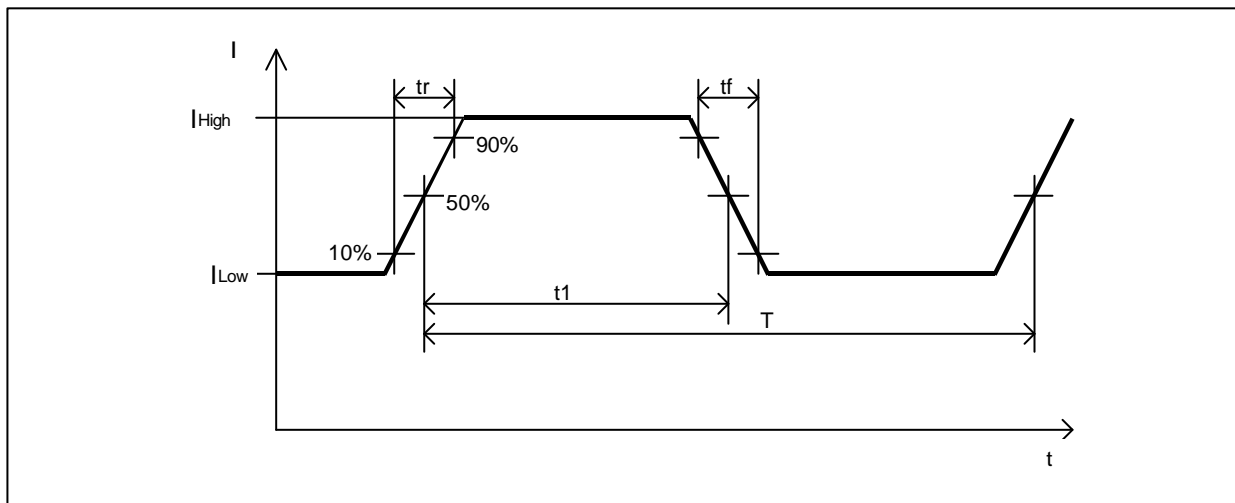


Figure 4 Definition of rise and fall time, duty = $t1/T * 100\%$

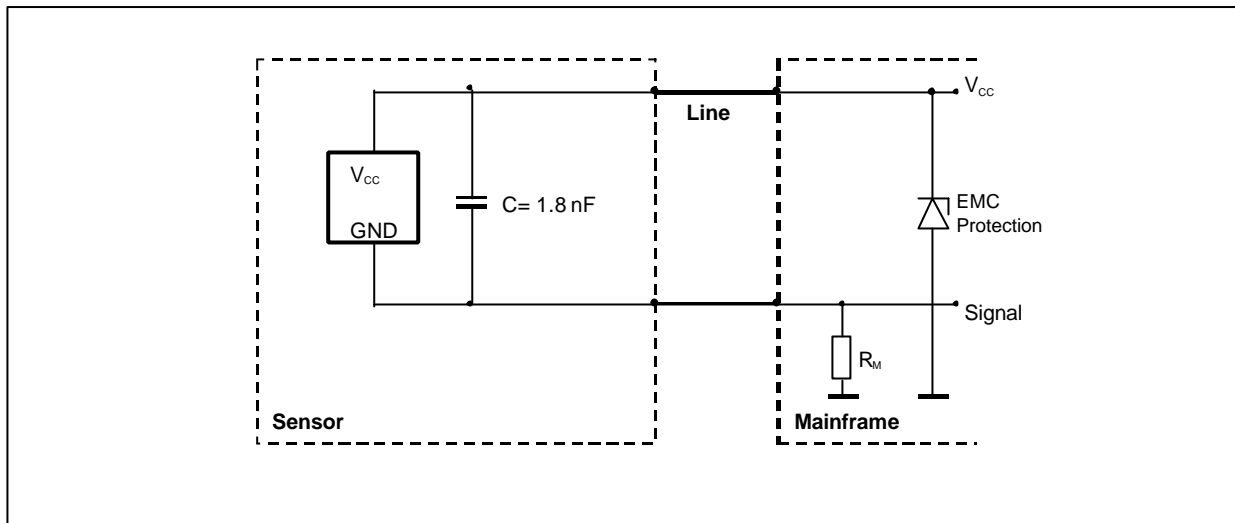


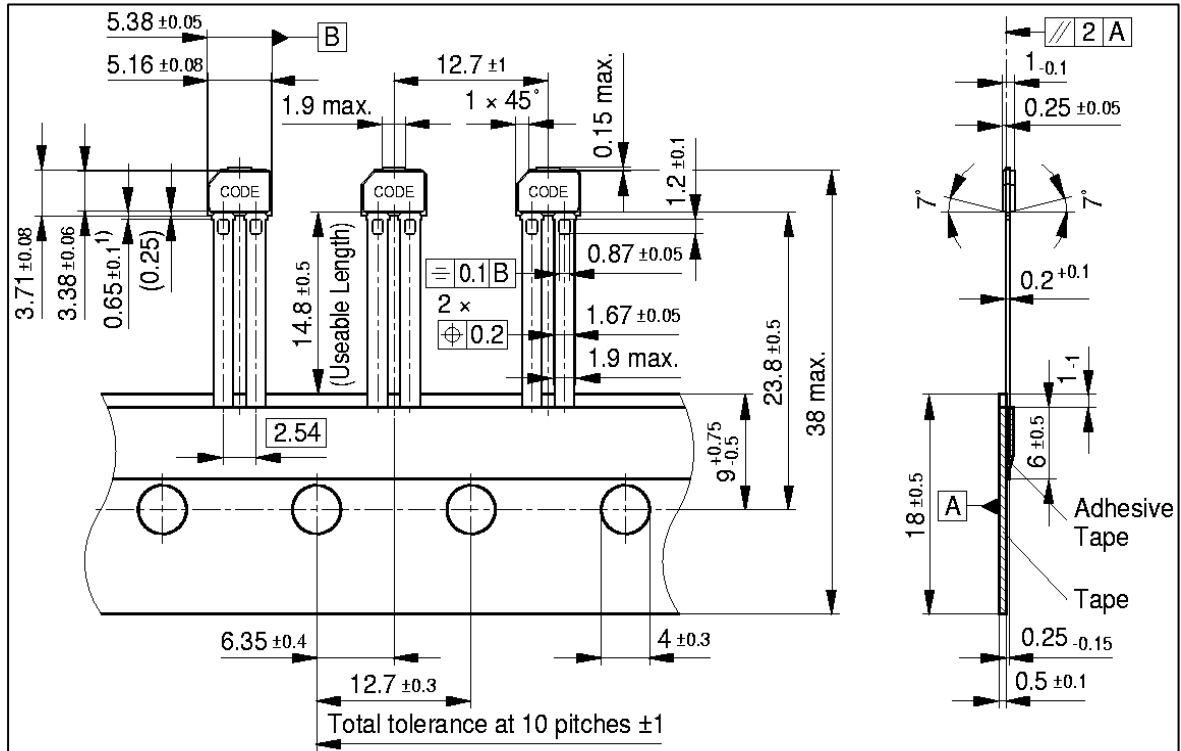
Figure 5 Application Circuit

Electro Magnetic Compatibility

t.b.d.

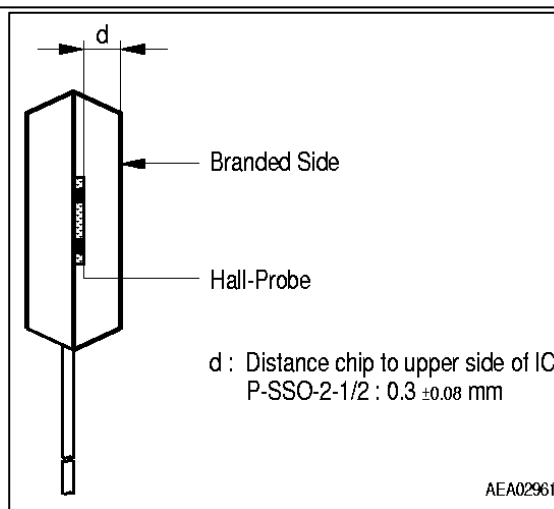
Package Outlines

P-SSO-2-1
 (Plastic Single Small Outline Package)



1) No solder function area

GPO09296



AEA02961

SUNSTAR商斯达实业集团是集研发、生产、工程、销售、代理经销、技术咨询、信息服务等为一体的高科技企业，是专业高科技电子产品生产厂家，是具有 10 多年历史的专业电子元器件供应商，是中国最早和最大的仓储式连锁规模经营大型综合电子零部件代理分销商之一，是一家专业代理和分销世界各大品牌 IC 芯片和电子元器件的连锁经营综合性国际公司。在香港、北京、深圳、上海、西安、成都等全国主要电子市场设有直属分公司和产品展示展销窗口门市部专卖店及代理分销商，已在全国范围内建成强大统一的供货和代理分销网络。我们专业代理经销、开发生产电子元器件、集成电路、传感器、微波光电元器件、工控机/DOC/DOM 电子盘、专用电路、单片机开发、MCU/DSP/ARM/FPGA 软件硬件、二极管、三极管、模块等，是您可靠的一站式现货配套供应商、方案提供商、部件功能模块开发配套商。专业以现代信息产业（计算机、通讯及传感器）三大支柱之一的传感器为主营业务，专业经营各类传感器的代理、销售生产、网络信息、科技图书资料及配套产品设计、工程开发。我们的专业网站——中国传感器科技信息网（全球传感器数据库）www.SENSOR-IC.COM 服务于全球高科技生产商及贸易商，为企业科技产品开发提供技术交流平台。欢迎各厂商互通有无、交换信息、交换链接、发布寻求代理信息。欢迎国外高科技传感器、变送器、执行器、自动控制产品厂商介绍产品到中国，共同开拓市场。本网站是关于各种传感器-变送器-仪器仪表及工业自动化大型专业网站，深入到工业控制、系统工程计 测量、自动化、安防报警、消费电子等众多领域，把最新的传感器-变送器-仪器仪表买卖信息，最新技术供求，最新采购商，行业动态，发展方向，最新的技术应用和市场资讯及时的传递给广大科技开发、科学研究、产品设计人员。本网站已成功为石油、化工、电力、医药、生物、航空、航天、国防、能源、冶金、电子、工业、农业、交通、汽车、矿山、煤炭、纺织、信息、通信、IT、安防、环保、印刷、科研、气象、仪器仪表等领域从事科学研究、产品设计、开发、生产制造的科技人员、管理人员、和采购人员提供满意服务。我们公司专业生产、代理、经销、销售各种传感器、变送器、敏感元器件、开关、执行器、仪器仪表、自动化控制系统：专业从事设计、生产、销售各种传感器、变送器、各种测控仪表、热工仪表、现场控制器、计算机控制系统、数据采集系统、各类环境监控系统、专用控制系统应用软件以及嵌入式系统开发及应用等工作。如热敏电阻、压敏电阻、温度传感器、温度变送器、湿度传感器、湿度变送器、气体传感器、气体变送器、压力传感器、压力变送、称重传感器、物（液）位传感器、物（液）位变送器、流量传感器、流量变送器、电流（压）传感器、溶氧传感器、霍尔传感器、图像传感器、超声波传感器、位移传感器、速度传感器、加速度传感器、扭距传感器、红外传感器、紫外传感器、火焰传感器、激光传感器、振动传感器、轴角传感器、光电传感器、接近传感器、干簧管传感器、继电器传感器、微型电泵、磁敏（阻）传感器、压力开关、接近开关、光电开关、色标传感器、光纤传感器、齿轮测速传感器、时间继电器、计数器、计米器、温控仪、固态继电器、调压模块、电磁铁、电压表、电流表等特殊传感器。同时承接传感器应用电路、产品设计和自动化工程项目。

更多产品请看本公司产品专用销售网站：

商斯达中国传感器科技信息网：<http://www.sensor-ic.com/>

商斯达工控安防网：<http://www.pc-ps.net/>

商斯达电子元器件网：<http://www.sunstare.com/>

商斯达微波光电产品网：[HTTP://www.rfoe.net/](http://www.rfoe.net/)

商斯达消费电子产品网：<http://www.icasic.com/>

商斯达军工产品网：<http://www.junpinic.com/>

商斯达实业科技产品网：<http://www.sunstars.cn/> 传感器销售热线：

地址：深圳市福田区福华路福庆街鸿图大厦 1602 室

电话：0755-83607652 83376489 83376549 83370250 83370251 82500323

传真：0755-83376182 (0) 13902971329 MSN: SUNS888@hotmail.com

邮编：518033 E-mail: szss20@163.com QQ: 195847376

深圳赛格展销部：深圳华强北路赛格电子市场 2583 号 电话：0755-83665529 25059422

技术支持：0755-83394033 13501568376

欢迎索取免费详细资料、设计指南和光盘；产品凡多，未能尽录，欢迎来电查询。

北京分公司：北京海淀区知春路 132 号中发电子大厦 3097 号

TEL: 010-81159046 82615020 13501189838 FAX: 010-62543996

上海分公司：上海市北京东路 668 号上海赛格电子市场 D125 号

TEL: 021-28311762 56703037 13701955389 FAX: 021-56703037

西安分公司：西安高新开发区 20 所(中国电子科技集团导航技术研究所)

西安劳动南路 88 号电子商城二楼 D23 号

TEL: 029-81022619 13072977981 FAX:029-88789382