

#### Features

- Non-optical solid-state device
- 300 × 300 sensor array, 50 μm pitch
- 1.5 cm × 1.5 cm sensor area
- 500-dpi resolution
- Operation from 3V to 5.5V
- Ultra-hard protective coating
- Integrated 8-bit flash analog-to-digital converter
- 8-bit microprocessor interface
- Thin, 2.6 mm VSPA 80/1 package
- Standard CMOS technology
- Low power, less than 200 mW

#### Applications

- Database and network access
- Portable fingerprint acquisition
- Access control (home, auto, office, etc.)
- ATM
- Smart cards
- Cellular phone security access

(Note: For difference between FPS110 and FPS110B see SETCUR description on page 3)

#### Overview

The Veridicom FPS110 Solid-State Fingerprint Sensor is a direct contact, fingerprint acquisition device. It is a high performance, low power, low cost, capacitive sensor with an integrated two-dimensional array of metal electrodes in the sensing array. Each metal electrode acts as one plate of a capacitor and the contacting finger acts as the second plate. A passivation layer on the device surface forms the dielectric between these two plates. Ridges and valleys on the finger yield varying capacitor values across the array, which is read to form an image of the fingerprint.

The FPS110 is manufactured in standard CMOS technology and is available in an 80-pin, VSPA 80/1. The 300 × 300 sensor array has a 50 μm pitch and yields a 500-dpi image. The sensor surface is protected by a patented, ultra-hard, abrasion and chemical resistant coating.

A block diagram of the FPS110 is shown in Figure 1. The FPS110 has an integrated 8-bit flash analog-to-digital converter to digitize the output of the sensor array. The fingerprint image is presented an 8-bit bi-directional bus interface compatible with most microprocessors.

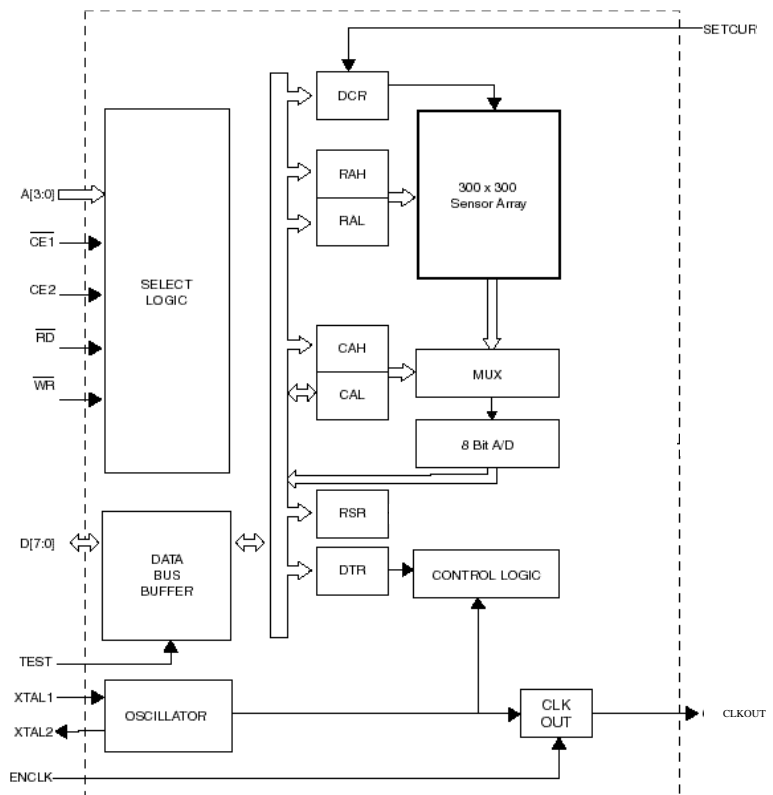


Figure 1. FPS110 Block Diagram

## Chip Operation

The sensor array is composed of 300 rows and 300 columns of sensor plates. Associated with each column are two sample-and-hold circuits. A fingerprint image is sensed or captured one row at a time. This “row capture” occurs in two phases. In the first phase, the sensor plates of the selected row are pre-charged to the  $V_{DD}$  voltage. During this pre-charge period, an internal signal enables the first set of sample-and-hold circuits to store the pre-charged plate voltages of the row.

In the second phase, the row of sensor plates is discharged with a current source. The rate at which a cell is discharged is proportional to the “discharge current.” After a period of time (referred to as the “discharge time”), an internal signal enables the second set of sample-and-hold circuits to store the final plate voltages. The difference between the pre-charged and discharged plate voltages is a measure of the capacitance of a sensor cell. After the row capture, the cells within the row are ready to be digitized.

The sensitivity of the chip is adjusted by changing the discharge current and discharge time. The nominal value of the current source is controlled by an external resistor connected between the SETCUR pin and ground. The current source is controlled from the Discharge Current Register (DCR). The discharge time is controlled by the Discharge Time Register (DTR).

The sensor array is a row-oriented device. Images are read out one row at a time. The High-Order Row Address Register (RAH) and the Low-Order Row Address Register (RAL) must be programmed to select a row to be captured. Writing to RAL initiates a row capture. The capture time is a function of the external clock and the DTR. After the discharge cycle, the outputs of the row elements will be stored in analog sample and hold circuits.

After the row capture is completed, the High-Order Column Address Register (CAH) and Low-Order Column Address Register (CAL) must be programmed to select an element within the captured row to be digitized. Writing to CAL causes the analog-to-digital (A/D) converter to digitize the difference between the outputs of the two sample-and-holds of the selected column cell. The output of the A/D converter is accessed by reading the CAL register.

Rows can be accessed in any order; however, the selected row must be captured before the column cells are read. The column cells within a row can be accessed in any order.

## Special Features

There are two programmable open-drain outputs that can be used for driving LEDs.

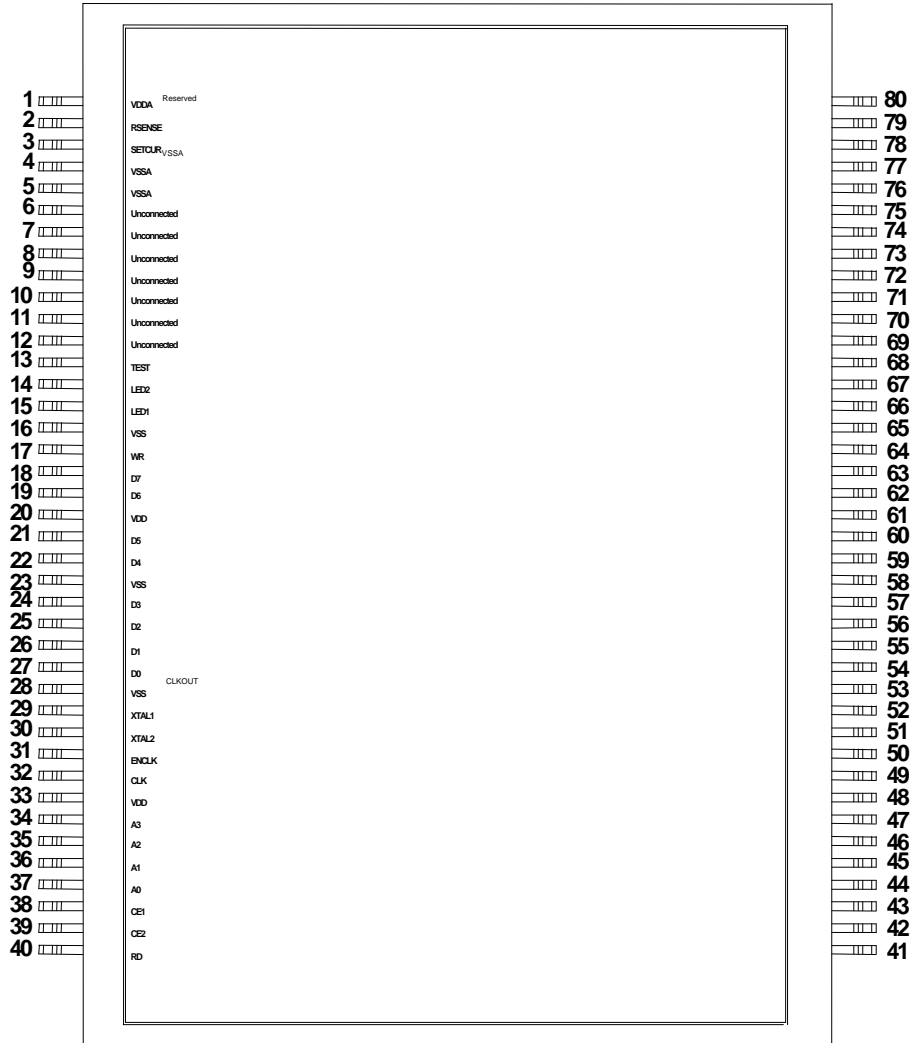
The CLKOUT pin can be enabled to output a square-wave clock of the same frequency as the oscillator clock. CLKOUT can be used to drive external circuitry. When ENCLK is high, the clock signal is present at the CLKOUT pin. When ENCLK is low or unconnected, the CLKOUT output is held low.

## FPS110 Solid-State Fingerprint Sensor

### FPS110 Pin Information for VSPA 80/1

Pin Number	Pin Name	Type	Description	Notes
34	A3	Input	Address Inputs	Address signals connected to these pins select a register to read from or write to during data transfer.
35	A2			
36	A1			
37	A0			
38	$\overline{CE1}$		Chip Enable, Active Low	When $\overline{CE1}$ is low and CE2 is high, the chip is selected.
39	CE2		Chip Enable, Active High	When $\overline{CE1}$ is low and CE2 is high, the chip is selected.
40	$\overline{RD}$		Read Enable, Active Low	This pin must be low while $\overline{WR}$ is high and the chip selected in order to read a register on the chip.
17	$\overline{WR}$	Write Enable, Active Low	This pin must be low while the chip is selected to write to a register on the chip.	
18	D7	Bi-directional	Data Bus	Inputs when $\overline{WR}$ is low and chip is selected. Outputs when $\overline{RD}$ is low, $\overline{WR}$ is high, and chip is selected.
19	D6			
21	D5			
22	D4			
24	D3			
25	D2			
26	D1			
27	D0			
32	CLKOUT	Output	Clock Output	This pin outputs the oscillator clock frequency when ENCLK is high.
31	ENCLK	Input	Enable Clock Output	A high on this pin enables the CLKOUT pin. A low on this pin holds CLKOUT low. ENCLK has an internal pull-down resistor.
15	LED1	Open-drain Output	LED driver	This pin can be used to drive an LED.
14	LED2	Open-drain Output		
3	SETCUR	Input	Set Discharge Current	Place an external resistor R1 (200K – 680K ohms) between this pin and ground. Typical: FPS110, R1 = 680K; FPS110B, R1 = 200K.
13	TEST		Reserved pin	Must be left disconnected.
20, 33	V <sub>DD</sub>	Power	Digital Power Supply	
1	V <sub>DDA</sub>		Analog Power Supply	
16, 23, 28	V <sub>SS</sub>	Ground	Digital ground	
4, 5	V <sub>SSA</sub>		Analog ground	
29	XTAL1	Input	Input to the On-Chip Oscillator	To use the internal oscillator connect a crystal circuit to this pin. If an external oscillator is used, its output is connected to this pin. XTAL1 is the clock source for internal timing.
30	XTAL2	Output	Output of the On-Chip Oscillator	To use the internal oscillator connect a crystal circuit to this pin. If an external oscillator is used, leave XTAL2 unconnected.
41-80	GNDSHLD	Shield Ground	Connected to Package Top Plate	These pins should connect to chassis ground.
2, 6-12	N/A	N/A		Not connected.

**FPS110 Connection Diagram**



## FPS110 Solid-State Fingerprint Sensor

### Function Table

$\overline{\text{CE1}}$	$\text{CE2}$	$\overline{\text{RD}}$	$\overline{\text{WR}}$	Mode	Data Lines
H	X	X	X	De-selected	High-Z
X	L	X	X	De-selected	High-Z
L	H	H	H	Standby	High-Z
L	H	L	H	Read	Data Out
L	H	H	L	Write	Data In

### Register Map

A3	A2	A1	A0	Access	Register	Description
0	0	0	0	Write	RAL	Low Order Row Address Register
0	0	0	1	Write	RAH	High Order Row Address Register
0	0	1	0	Read/Write	CAL	Low Order Column Address Register
0	0	1	1	Write	CAH	High Order Column Address Register
0	1	0	0	Write	DTR	Discharge Time Register
0	1	0	1	Write	DCR	Discharge Current Register
0	1	1	0	Write	RSR	Reserved

### Address Register Descriptions

Refer to *Row Capture and A/D Conversion Timing* on page 8 to calculate row capture and A/D conversion times.

#### RAL (A3-A0 Address 0000) Write Only

##### Low Order Row Address Register

This register and bit 0 of RAH form the 9-bit Row Address Register that selects the row to be captured. The 9-bit Row Address Register selects a row address from 0 through 299. Writing the RAL starts a row capture. Only RAL has to be written if RAH doesn't change, otherwise RAH has to be written before RAL.

MSB							LSB	
BIT7	BIT6	BIT5	BIT4	BIT3	BIT2	BIT1	BIT0	
RA7	RA6	RA5	RA4	RA3	RA2	RA1	RA0	

Bit Number	Bit Name	Function
[7:0]	RA[7:0]	Low eight bits of Row Address Register.

**RAH (A3-A0 Address 0001) Write Only****High Order Row Address Register**

Bit 0 of this register and RAL form the 9-bit Row Address Register that selects the row to be converted. The L1 and L2 bits control two open-drain outputs that can be used to drive LEDs.

MSB							LSB
BIT7	BIT6	BIT5	BIT4	BIT3	BIT2	BIT1	BIT0
L1	L2	-	-	-	-	-	RA8

Bit Number	Bit Name	Function
7	L1	L1=0, LED1 output low L1=1, LED1 output high-Z
6	L2	L2=0, LED 2 output low L2=1, LED 2 output high-Z
[5:1]	-	Reserved, write 0 to these bits.
0	RA8	MSB of Row Address

**CAL (A3-A0 Address 0010) Read/Write****Low Order Column Address Register**

CAL is a read/write register. Writing to this address writes to the low-order 8 bits of the 9-bit Column Address Register. The 9-bit Column Address Register selects a column from 0 through 299. Writing to CAL causes the analog-to-digital (A/D) converter to begin digitizing its input. The input of the A/D converter is selected by bits 7 and 6 of the CAH register. The user should wait until the row capture is completed before writing to the CAL.

Reading from this address returns the output of the A/D converter. After writing to CAL, the user should wait until A/D conversion completes before reading the A/D converter.

MSB							LSB
BIT7	BIT6	BIT5	BIT4	BIT3	BIT2	BIT1	BIT0
CA7	CA6	CA5	CA4	CA3	CA2	CA1	CA0

Bit Number	Bit Name	Function
[7:0]	CA[7:0]	(WRITE) Low eight bits of Column Address Register. (READ) Output of A/D converter.

## FPS110 Solid-State Fingerprint Sensor

### CAH (A3-A0 Address 0011) Write Only

#### High Order Column Address Register

Bit 0 of this register and CAL form the 9-bit Column Address Register that selects a cell from the current row for digitizing. The user should wait until the row capture is completed before writing to CAH.

MSB							LSB
BIT7	BIT6	BIT5	BIT4	BIT3	BIT2	BIT1	BIT0
R	T	-	-	-	-	-	CA8

Bit Number	Bit Name	Function
[7:1]	-	Reserved, write 0 to these bits.
0	CA8	MSB of Column Address Register

### DTR (A3-A0 Address 0100) Write Only

#### Discharge Time Register

MSB							LSB
BIT7	BIT6	BIT5	BIT4	BIT3	BIT2	BIT1	BIT0
PD	T6	T5	T4	T3	T2	T1	T0

Bit Number	Bit Name	Function
7	PD	Power down chip. PD=0, Chip in Normal Mode PD=1, Chip in Low Power Mode
[6:0]	T[6:0]	Selects the count to be loaded into the Discharge Timer. Discharge time is selected in increments of the oscillator period. Discharge Time is defined as the period between the sampling and holding of the pre-charged sensor cell to the sampling and holding of the discharging sensor cell. The Discharge Time can be calculated from the following equation:  Discharge Time = T[6:0] * t <sub>osc</sub>

**DCR (A3-A0 Address 0101) Write Only****Discharge Current Register**

MSB

LSB

BIT7	BIT6	BIT5	BIT4	BIT3	BIT2	BIT1	BIT0
F2	F1	TRST	DC4	DC3	DC2	DC1	DC0

Bit Number	Bit Name	Function															
[7:6]	F2, F1	These two bits tell the chip the frequency of the external oscillator or crystal that is connected to the chip.  <table border="1"> <thead> <tr> <th>F2</th> <th>F1</th> <th>XTAL Input</th> </tr> </thead> <tbody> <tr> <td>0</td> <td>0</td> <td>10-15 MHz</td> </tr> <tr> <td>0</td> <td>1</td> <td>15-20 MHz</td> </tr> <tr> <td>1</td> <td>0</td> <td>20-30 MHz</td> </tr> <tr> <td>1</td> <td>1</td> <td>30-40 MHz</td> </tr> </tbody> </table>	F2	F1	XTAL Input	0	0	10-15 MHz	0	1	15-20 MHz	1	0	20-30 MHz	1	1	30-40 MHz
F2	F1	XTAL Input															
0	0	10-15 MHz															
0	1	15-20 MHz															
1	0	20-30 MHz															
1	1	30-40 MHz															
5	TRST	Timer Reset. Set this bit to halt and reset the Discharge Timer. Resetting the Discharge Timer is necessary to put the Discharge Timer in a known state after power-up or after returning to Normal mode from Low-power mode (See bit 7 of DTR).  TRST=0, Normal Timer Operation TRST=1, Halt and Clear Discharge Timer (doesn't clear DTR)															
[4:0]	DC[4:0]	Selects the Discharge Current source value.															

**RSR (A3-A0 Address 0110) Write Only****Reserved**

The user must initialize this resistor to zero.

MSB

LSB

BIT7	BIT6	BIT5	BIT4	BIT3	BIT2	BIT1	BIT0
-	-	-	-	-	-	-	-

Bit Number	Bit Name	Function
[7:0]	-	Reserved. Write 0 to these bits.

**Row Capture and A/D Conversion Timing**

F2	F1	XTAL Input Range	Row Capture Time in OSC Clock Periods	A/D Conversion Time in OSC Clock Periods
0	0	10-15 MHz	18+n	13
0	1	15-20 MHz	24+n	15
1	0	20-30 MHz	36+n	23
1	1	30-40 MHz	48+n	30

NOTE: n is selected by bits T[6:0] of DTR.



## FPS110 Solid-State Fingerprint Sensor

### A/D Converter

The integrated 8-bit flash A/D converter is a buffered device. Each write to CAL causes: 1) the result of the previous conversion to be latched and made readable at CAL, and 2) the A/D converter to start digitizing its current input. Consequently, it takes 301 writes to CAL in order to digitize the 300 cells of a row.

### Specifications\*

\*All specifications in this document are preliminary and subject to change.

#### Absolute Maximum Ratings

- Storage Temperature: -65° to +150° C
- DC Voltage Applied to any Pins: -0.5 V to +7.0 V

#### Operating Range

Symbol	Parameter	Min	Max	Unit
V <sub>DD</sub>	Digital Supply Voltage	+3.0	+5.5	V
V <sub>DDA</sub>	Analog Supply Voltage	+3.0	+5.5	V
	Standard Temperature Range	0	60	°C
f <sub>OSC</sub>	Oscillator Frequency V <sub>DD</sub> = 5.0V	10	40	MHz
		V <sub>DD</sub> = 3.0V	10	20

#### DC Electrical Characteristics

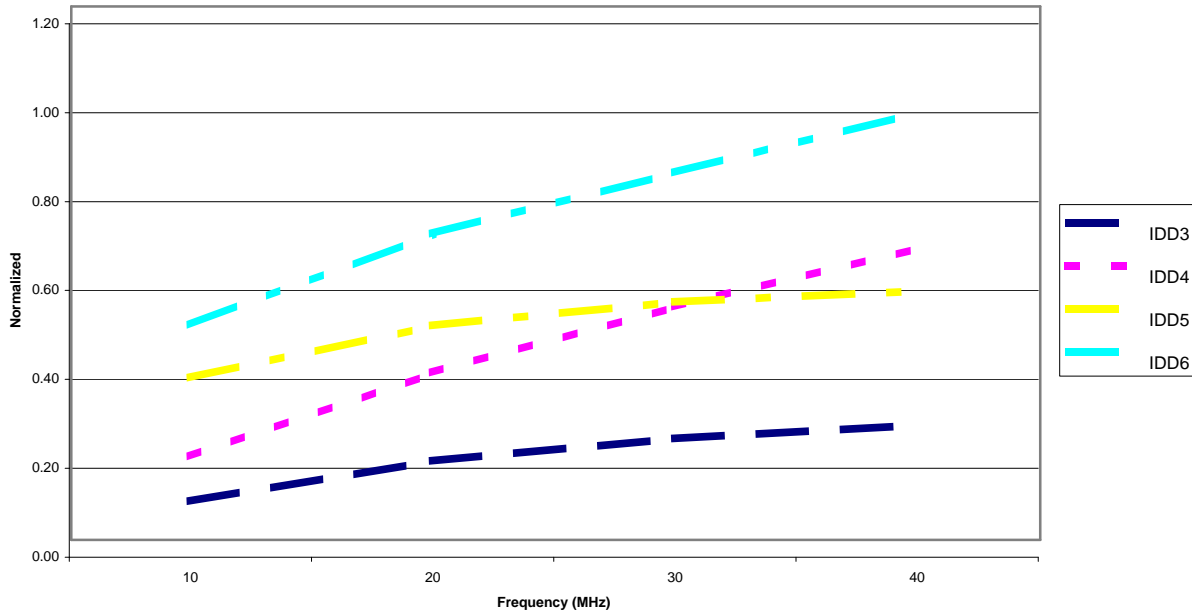
Symbol	Parameter	Test Conditions	Min	Max	Unit
V <sub>OH</sub>	Output High Voltage	V <sub>DD</sub> = 4.5V, I <sub>OH</sub> = -4 mA	2.4	-	V
V <sub>OL</sub>	Output Low Voltage	V <sub>DD</sub> = 4.5V, I <sub>OL</sub> = 8 mA	-	0.4	V
V <sub>OH</sub>	Output High Voltage	V <sub>DD</sub> = 3.0V, I <sub>OH</sub> = -2 mA	2.4	-	V
V <sub>OL</sub>	Output Low Voltage	V <sub>DD</sub> = 3.0V, I <sub>OL</sub> = 4 mA	-	0.4	V
V <sub>IH</sub>	Input High Voltage		2.0	V <sub>DD</sub>	V
V <sub>IL</sub>	Input Low Voltage		-0.5	0.8	V
I <sub>LI</sub>	Input Leakage Current	GND ≤ V <sub>in</sub> ≤ 5.5V	-5.0	5.0	μA
I <sub>LO</sub>	Output Leakage Current	GND ≤ V <sub>out</sub> ≤ 5.5V	-5.0	5.0	μA

**Power Supply Characteristics ( $V_{DD} = 5.5V$ ,  $f_{OSC} = 40$  MHz Standard Temperature Range)**

Symbol	Parameter	Test Conditions	Typ	Max	Unit
$I_{DD1}$	Digital Supply Current	Power down with CLKOUT disabled, (DTR bit 7 = 1, ENCLK = 0)	<1	50	$\mu A$
$I_{DD2}$		Power down with CLKOUT enabled. ( DTR bit 7 = 1, ENCLK = 1)	17	20	mA
$I_{DD3}$		Idle with CLKOUT disabled. (DTR bit 7 = 0, ENCLK = 0)	8	12	mA
$I_{DD4}$		Idle with CLKOUT enabled. ( DTR bit 7 = 0, ENCLK = 1)	17	20	mA
$I_{DD5}$		Active A/D conversion with CLKOUT disabled. (DTR bit 7 = 0, ENCLK = 0)	15	25	mA
$I_{DD6}$		Active A/D conversion with CLKOUT enabled. (DTR bit 7 = 0, ENCLK = 1)	25	30	mA
$I_{DDA}$	Analog Supply Current	Power down with CLK disabled or enabled. (DTR bit 7 = 1)	<10	50	$\mu A$
		IDLE with CLKOUT disabled or enabled, (DTR bit 7 = 0)	15	22	mA
		Active A/D conversion with CLKOUT disabled or enabled. (DTR bit 7 = 0)	18	26	mA

Note: Analog supply currents are independent of  $f_{OSC}$   
 Note: XTAL2 & CLKOUT driving  $C_{LOAD} = 50pF$

**Normalized Digital Supply Current vs.  $f_{OSC}$ , 5.5V, 25°C**



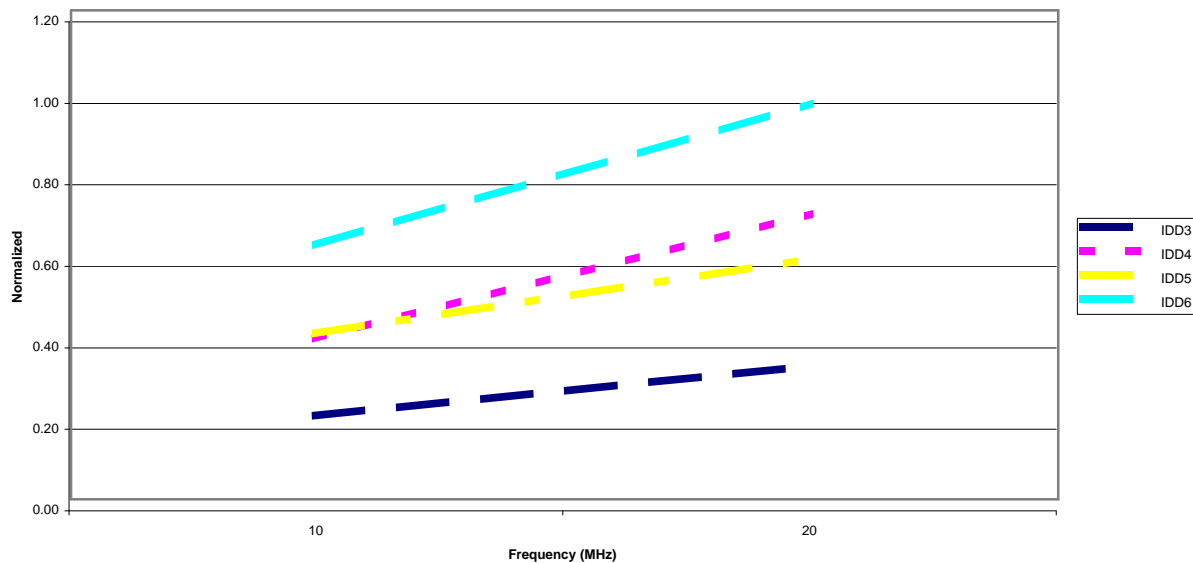
# FPS110 Solid-State Fingerprint Sensor

## Power Supply Characteristics $V_{DD} = 3.6V$ , Commercial Temperature Range, $f_{OSC} = 20\text{ MHz}$

Symbol	Parameter	Test Conditions	Typ	Max	Unit
$I_{DD1}$	Digital Supply Current	Power down with CLKOUT disabled. ( $V_{DD} = \text{max}$ , $f_{OSC} = \text{max}$ , DTR bit 7 = 1, ENCLK = 0)	<1	50	$\mu\text{A}$
$I_{DD2}$		Power down with CLKOUT enabled. ( $V_{DD} = \text{max}$ , $f_{OSC} = \text{max}$ , DTR bit 7 = 1, ENCLK = 1)	6	10	mA
$I_{DD3}$		Idle with CLKOUT disabled. ( $V_{DD} = \text{max}$ , $f_{OSC} = \text{max}$ , DTR bit 7 = 0, ENCLK = 0)	3	6	mA
$I_{DD4}$		Idle with CLKOUT enabled. ( $V_{DD} = \text{max}$ , $f_{OSC} = \text{max}$ , DTR bit 7 = 0, ENCLK = 1)	6	10	mA
$I_{DD5}$		Active A/D conversion with CLKOUT disabled. ( $V_{DD} = \text{max}$ , $f_{OSC} = \text{max}$ , DTR bit 7 = 0, ENCLK = 0)	6	10	mA
$I_{DD6}$		Active A/D conversion with CLKOUT enabled. ( $V_{DD} = \text{max}$ , $f_{OSC} = \text{max}$ , DTR bit 7 = 0, ENCLK = 1)	9	13	mA
$I_{DDA}$	Analog Supply Current	Power down with CLK disabled or enabled. ( $V_{DDA} = \text{max}$ , DTR bit 7 = 1)	<2	50	$\mu\text{A}$
		IDLE with CLKOUT disabled or enabled, (DTR bit 7 = 0)	10	15	mA
		Active A/D conversion with CLKOUT disable or enable. (DTR bit 7 = 0)	12	18	mA

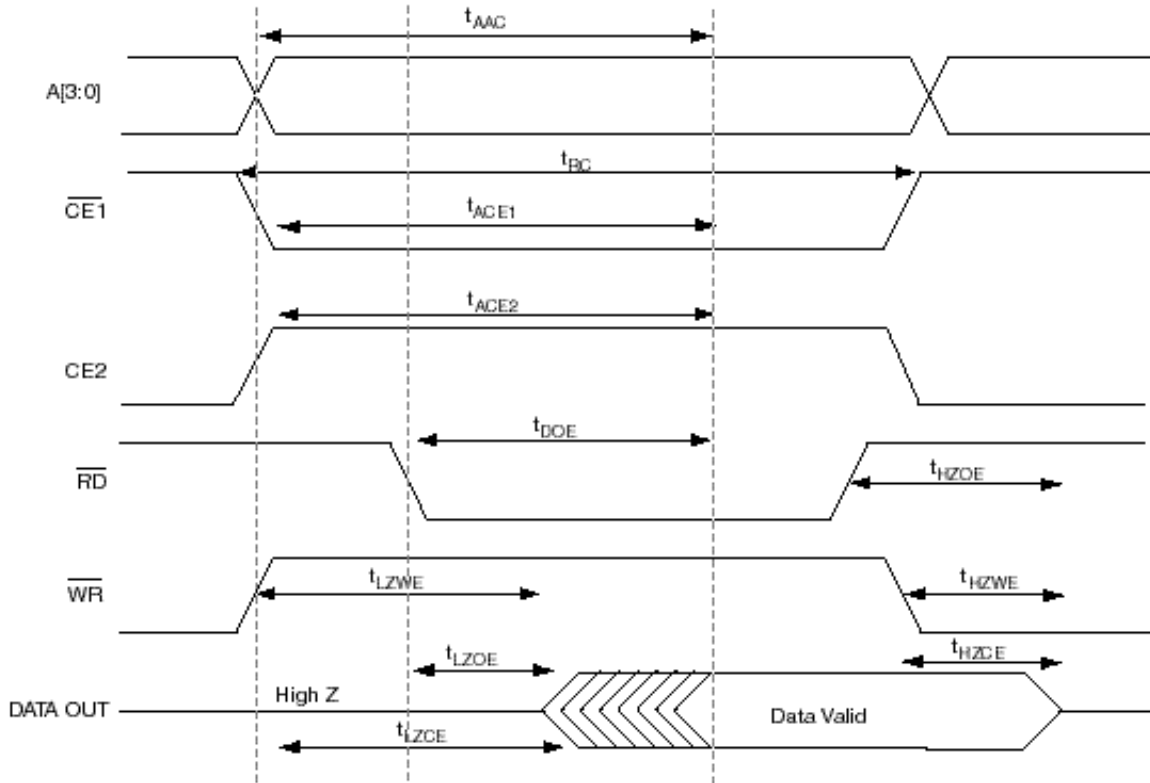
Note: Analog supply currents are independent of  $f_{OSC}$   
 Note: XTAL2 & CLKOUT driving  $C_{LOAD} = 50\text{ Pf}$

Normalized Digital Supply Current vs.  $f_{OSC}$ , 3.6V, 25°C



**Read Cycle Timing at  $V_{DD} = 3.0V$ , Standard Temperature Range**

Parameter	Description	Min	Max	Unit
$t_{AAC}$	Address valid to data valid.	-	70	ns
$t_{RC}$	Read Cycle Time	70	-	ns
$t_{ACE1}$	$\overline{CE1}$ low to data valid	-	70	ns
$t_{ACE2}$	CE2 high to data valid	-	70	ns
$t_{DOE}$	$\overline{RD}$ low to data valid	-	35	ns
$t_{LZOE}$	$\overline{RD}$ low to low Z	5	-	ns
$t_{HZOE}$	$\overline{RD}$ high to high Z	-	30	ns
$t_{LZCE}$	$\overline{CE1}$ low and CE2 high to low Z	5	-	ns
$t_{HZCE}$	$\overline{CE1}$ high to high Z or CE2 low to high Z	-	30	ns
$t_{LZWE}$	$\overline{WR}$ high to low Z	5	-	ns
$t_{HZWE}$	$\overline{WR}$ low to high Z	-	30	ns



**Figure 2. Read Cycle Timing**

## FPS110 Solid-State Fingerprint Sensor

### Write Cycle Timing at $V_{DD} = 3.0V$ , Standard Temperature Range

Parameter	Description	Min	Max	Unit
$t_{WC}$	Write Cycle	70	–	ns
$t_{SCE1}$	$\overline{CE1}$ low to write end	60	–	ns
$t_{SCE2}$	CE2 high to write end	60	–	ns
$t_{AW}$	Address setup to write end	55	–	ns
$t_{HA}$	Address hold from write end	5	–	ns
$t_{SA}$	Address set-up to write start	5	–	ns
$t_{PWE}$	$\overline{WR}$ Pulse Width	40	–	ns
$t_{SD}$	Data setup to write end	35	–	ns
$t_{HD}$	Data hold from write end	5	–	ns

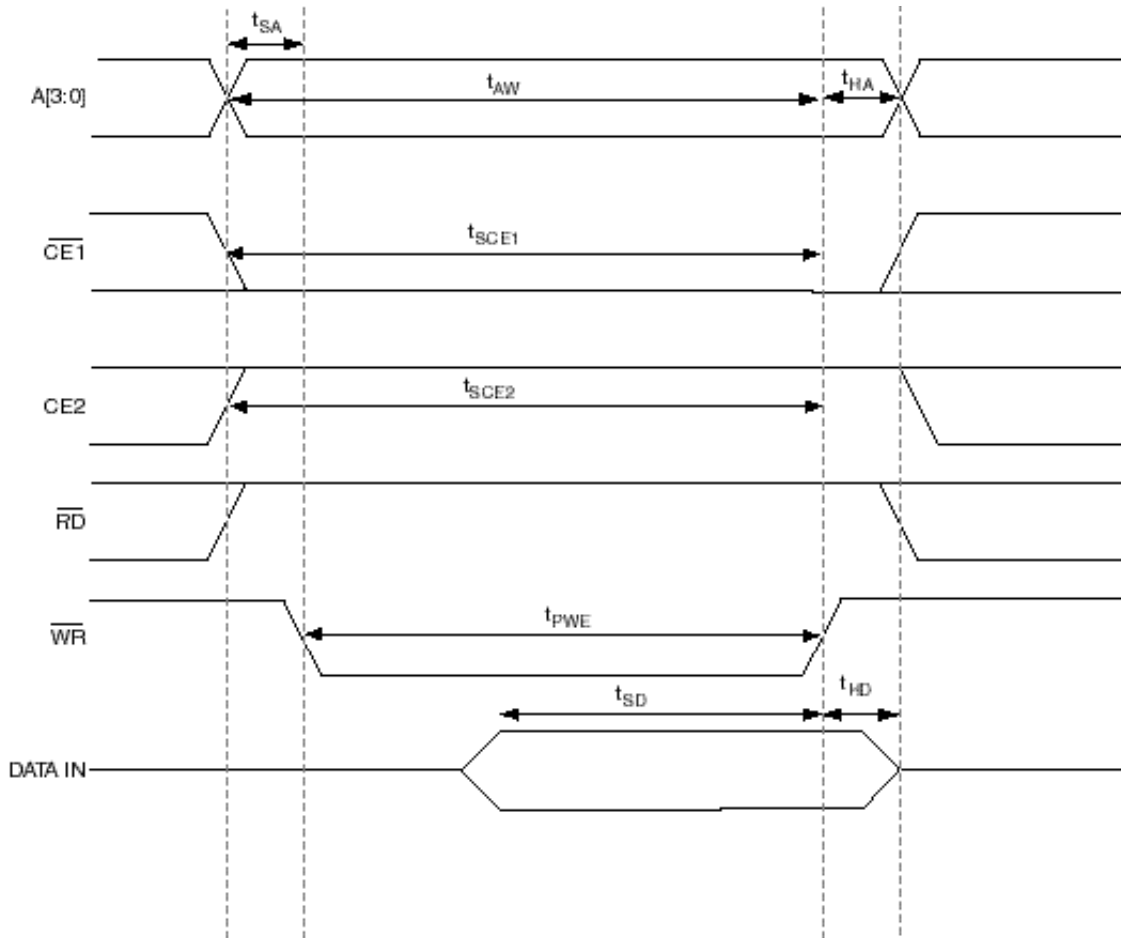
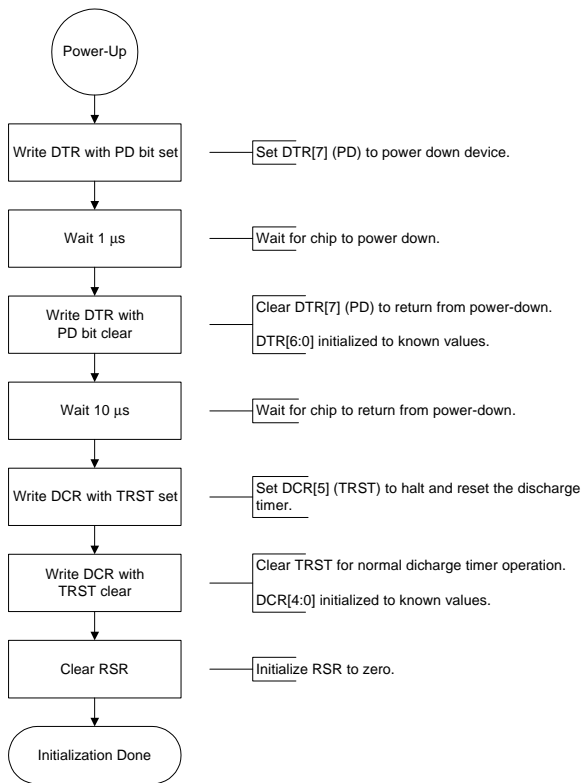
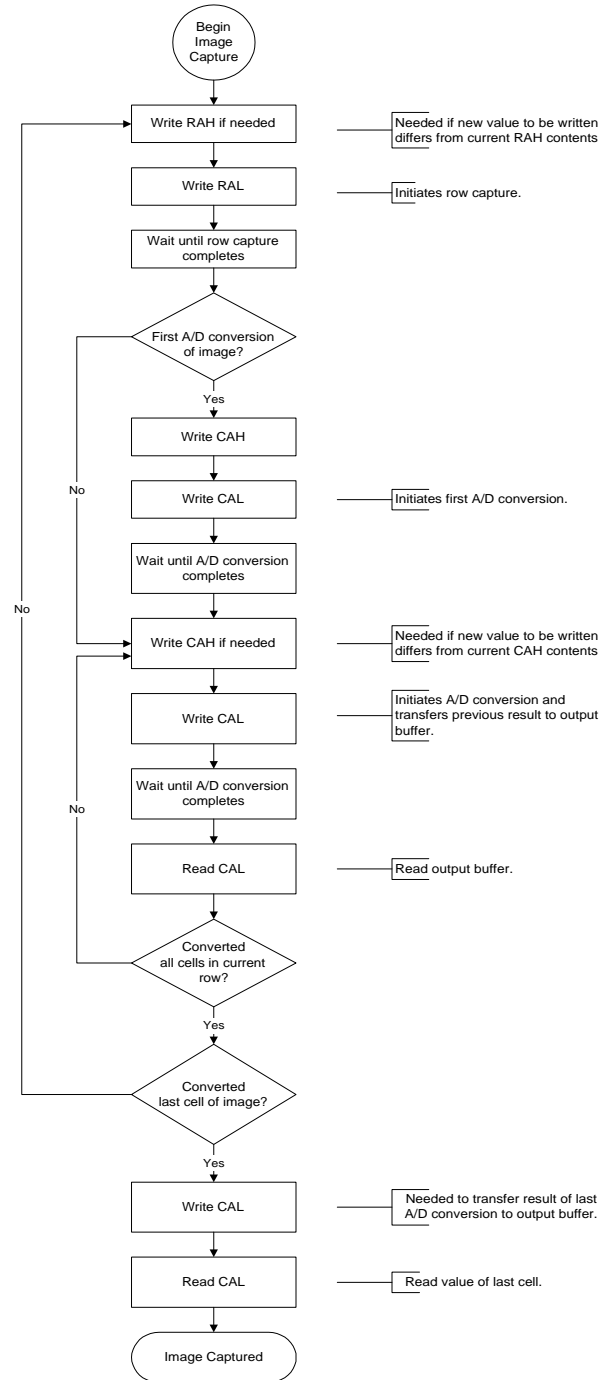


Figure 3. Write Cycle Timing

#### Power Up and Initialization



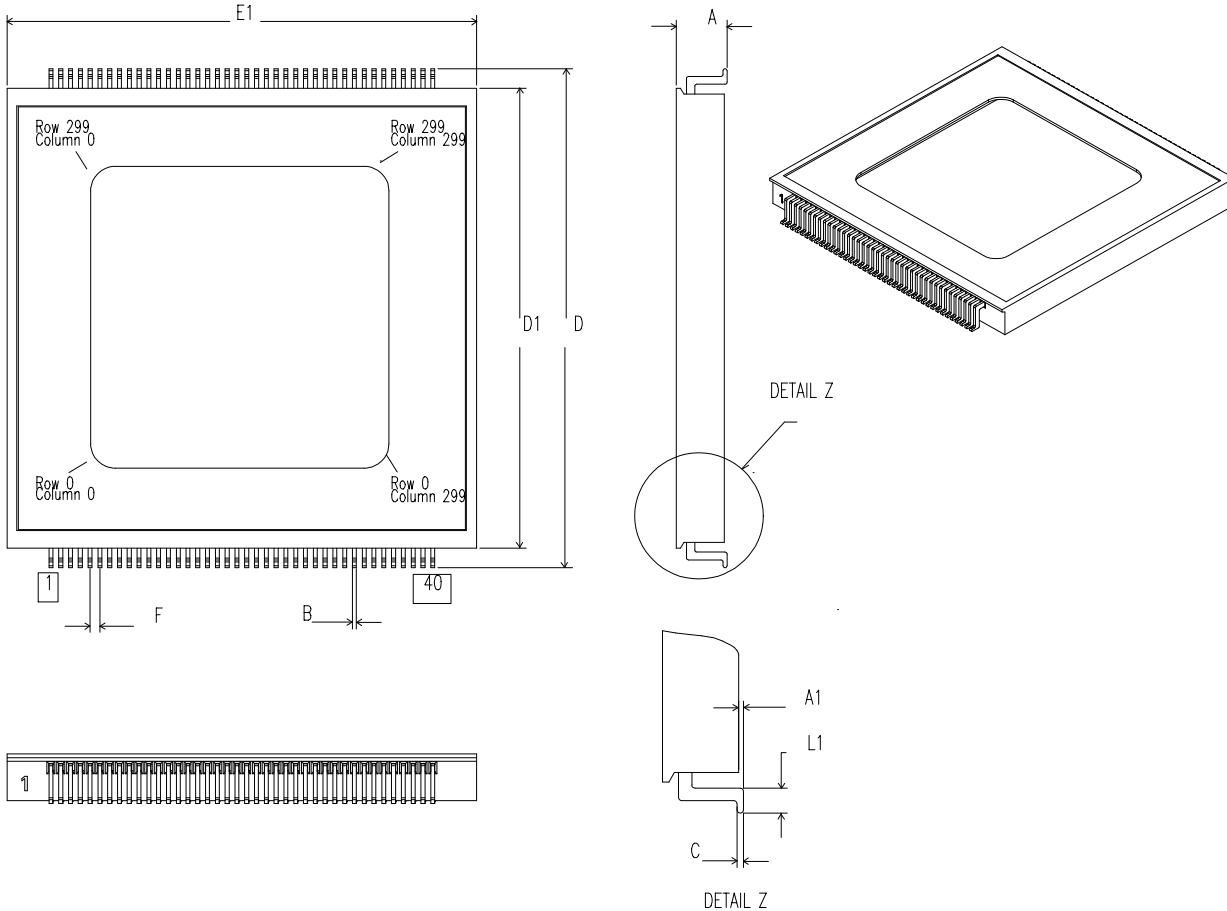
#### Image Capture



# FPS110 Solid-State Fingerprint Sensor

## FPS110 Package

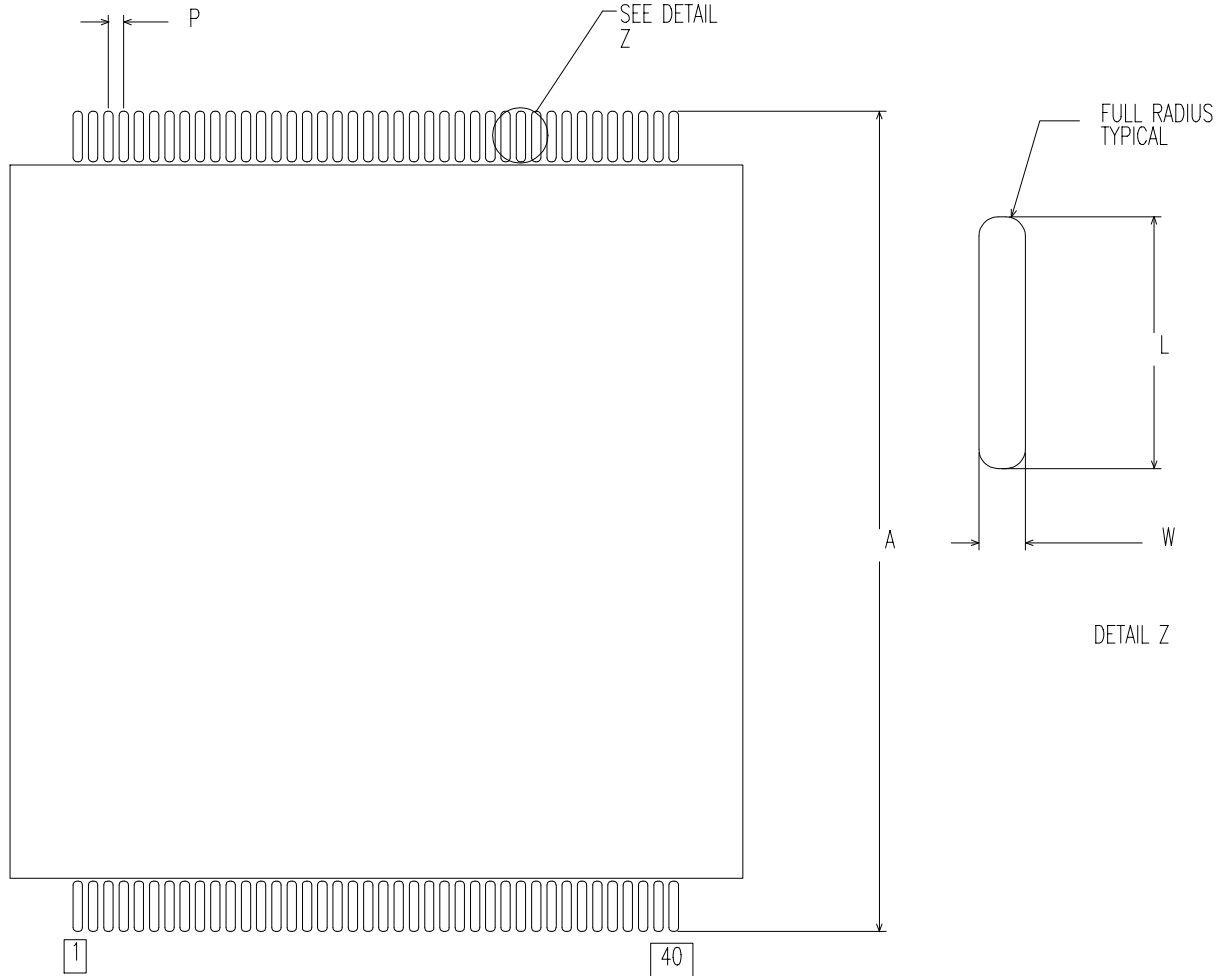
### FPS110 Assembly



FPS110 Dimensions				
Symbol	Description	Min	Nom	Max
N	Pin Count		80	
A	Overall Height		.102 (2.60)	
A1	Stand Off		.006 (.15)	
B	Pin Width		.008 (.20)	
C	Pin Thickness		.008 (.20)	
D	Tip to tip Dimension	1.016 (25.8)	1.025 (26.0)	1.032 (26.2)
D1	Package Body	.941 (23.9)	.945 (24.0)	.949 (24.1)
E1	Package Body	.941 (23.9)	.945 (24.0)	.949 (24.1)
F	Pin Pitch	.0187 (.47)	.0197 (.50)	.0207 (.53)
L1	Foot length		.032 (.81)	

Note: Dimensions are in inches (mm)

**FPS110 Solder Pad Layout**



Symbol	Description	Dimension
N	Pin Count	80
A	Tip to Tip Dimension	1.074 (27.30)
P	Pitch	.0197 (.50)
L	Pad Length	.065 (1.65)
W	Pad Width	.012 (.30)
Note: Dimensions are in inches (mm)		



## FPS110 Solid-State Fingerprint Sensor

---

### Manufacturing Considerations

**CAUTION: DO NOT USE ANY METAL PICKUP TOOLS WHICH WOULD CONTACT THE SENSOR DEVICE SURFACE WITHOUT PROTECTIVE LID INSTALLED**

- Surface Mount reflow temperature:

Recommended	220°C Max reflow spike*
Max Temp	240°C

- Avoid any high pressure spray directly to the sensor device surface.
- Use standard handling practices for ESD sensitive devices.

\* Refer to Veridicom PCB Assembly Process Guidelines, Document # 02-0042-01; 195° - 220°C reflow spike max temp. 40 sec. cycle.

### Array Pixel Criteria

- FPS110 ships with no more than 10 non-functional pixels.
- FPS110 ships with no more than 2 adjacent non-functional pixels

SUNSTAR商斯达实业集团是集研发、生产、工程、销售、代理经销、技术咨询、信息服务等为一体的高科技企业，是专业高科技电子产品生产厂家，是具有10多年历史的专业电子元器件供应商，是中国最早和最大的仓储式连锁规模经营大型综合电子零部件代理分销商之一，是一家专业代理和分销世界各大品牌IC芯片和电子元器件的连锁经营综合性国际公司。在香港、北京、深圳、上海、西安、成都等全国主要电子市场设有直属分公司和产品展示展销窗口门市部专卖店及代理分销商，已在全国范围内建成强大统一的供货和代理分销网络。我们专业代理经销、开发生产电子元器件、集成电路、传感器、微波光电元器件、工控机/DOC/DOM电子盘、专用电路、单片机开发、MCU/DSP/ARM/FPGA软件硬件、二极管、三极管、模块等，是您可靠的一站式现货配套供应商、方案提供商、部件功能模块开发配套商。专业以现代信息产业（计算机、通讯及传感器）三大支柱之一的传感器为主营业务，专业经营各类传感器的代理、销售生产、网络信息、科技图书资料及配套产品设计、工程开发。我们的专业网站——中国传感器科技信息网（全球传感器数据库）[www.SENSOR-IC.COM](http://www.SENSOR-IC.COM) 服务于全球高科技生产商及贸易商，为企业科技产品开发提供技术交流平台。欢迎各厂商互通有无、交换信息、交换链接、发布寻求代理信息。欢迎国外高科技传感器、变送器、执行器、自动控制产品厂商介绍产品到中国，共同开拓市场。本网站是关于各种传感器-变送器-仪器仪表及工业自动化大型专业网站，深入到工业控制、系统工程计 测量、自动化、安防报警、消费电子等众多领域，把最新的传感器-变送器-仪器仪表买卖信息，最新技术供求，最新采购商，行业动态，发展方向，最新的技术应用和市场资讯及时的传递给广大科技开发、科学研究、产品设计人员。本网站已成功为石油、化工、电力、医药、生物、航空、航天、国防、能源、冶金、电子、工业、农业、交通、汽车、矿山、煤炭、纺织、信息、通信、IT、安防、环保、印刷、科研、气象、仪器仪表等领域从事科学研究、产品设计、开发、生产制造的科技人员、管理人员、和采购人员提供满意服务。我们公司专业生产、代理、经销、销售各种传感器、变送器、敏感元器件、开关、执行器、仪器仪表、自动化控制系统：专业从事设计、生产、销售各种传感器、变送器、各种测控仪表、热工仪表、现场控制器、计算机控制系统、数据采集系统、各类环境监控系统、专用控制系统应用软件以及嵌入式系统开发及应用等工作。如热敏电阻、压敏电阻、温度传感器、温度变送器、湿度传感器、湿度变送器、气体传感器、气体变送器、压力传感器、压力变送、称重传感器、物（液）位传感器、物（液）位变送器、流量传感器、流量变送器、电流（压）传感器、溶氧传感器、霍尔传感器、图像传感器、超声波传感器、位移传感器、速度传感器、加速度传感器、扭距传感器、红外传感器、紫外传感器、火焰传感器、激光传感器、振动传感器、轴角传感器、光电传感器、接近传感器、干簧管传感器、继电器传感器、微型电泵、磁敏（阻）传感器、压力开关、接近开关、光电开关、色标传感器、光纤传感器、齿轮测速传感器、时间继电器、计数器、计米器、温控仪、固态继电器、调压模块、电磁铁、电压表、电流表等特殊传感器。同时承接传感器应用电路、产品设计和自动化工程项目。

更多产品请看本公司产品专用销售网站：

商斯达中国传感器科技信息网：<http://www.sensor-ic.com/>

商斯达工控安防网：<http://www.pc-ps.net/>

商斯达电子元器件网：<http://www.sunstare.com/>

商斯达微波光电产品网：[HTTP://www.rfoe.net/](http://www.rfoe.net/)

商斯达消费电子产品网：<http://www.icasic.com/>

商斯达军工产品网：<http://www.junpinic.com/>

商斯达实业科技产品网：<http://www.sunstars.cn/> 传感器销售热线：

地址：深圳市福田区福华路福庆街鸿图大厦1602室

电话：0755-83607652 83376489 83376549 83370250 83370251 82500323

传真：0755-83376182 (0) 13902971329 MSN: [SUNS888@hotmail.com](mailto:SUNS888@hotmail.com)

邮编：518033 E-mail: [szss20@163.com](mailto:szss20@163.com) QQ: 195847376

深圳赛格展销部：深圳华强北路赛格电子市场2583号 电话：0755-83665529 25059422

技术支持：0755-83394033 13501568376

欢迎索取免费详细资料、设计指南和光盘；产品凡多，未能尽录，欢迎来电查询。

北京分公司：北京海淀区知春路132号中发电子大厦3097号

TEL: 010-81159046 82615020 13501189838 FAX: 010-62543996

上海分公司：上海市北京东路668号上海赛格电子市场D125号

TEL: 021-28311762 56703037 13701955389 FAX: 021-56703037

西安分公司：西安高新开发区20所(中国电子科技集团导航技术研究所)

西安劳动南路88号电子商城二楼D23号

TEL: 029-81022619 13072977981 FAX:029-88789382